



E-FAN-02-011

June 2002

# Household Food Security in the United States, 1998 and 1999

## Detailed Statistical Report

By Barbara Cohen, James Parry, and Kenneth Yang, IQ Solutions

ERS contact: Mark Nord

### Abstract

This report provides estimates of the prevalence of food insecurity and hunger in U.S. households in 1998 and 1999 and trends since 1995 based on nationally representative data in the Food Security Supplement to the Current Population Survey (CPS). The report also provides estimates of the prevalence of hunger among children in food-insecure households (1995 through 1999) based on a child-specific scale. Prevalence rates are reported at the national level, along with breakdowns by household structure, race, ethnicity, income, metropolitan residence, and region.

### Acknowledgments

We would like to thank three people whose contributions were invaluable to this study. Mark Nord our project officer at the Economic Research Service, provided continuous guidance, advice, and technical assistance throughout the project. Robert Lerner, IQ Solutions, provided statistical consultation to our programming staff. Larry Radbill, Mathematica Policy Research, Inc., provided statistical and technical expertise.

**This report was prepared by IQ Solutions under a research contract from the Economic Research Service. The views expressed are those of the authors and not necessarily those of ERS or USDA.**

## TABLE OF CONTENTS

Executive Summary.....		vi
1. Introduction .....		1
A. The Food Security Measurement Project (Data Analysis For 1995-1997).....		3
B. The Food Security Measurement Project (Data Analysis For 1998-1999).....		6
2. Methodology .....		8
A. The Current Population Survey.....		8
B. Classifying Households by Food Security Status .....		8
C. Weighting and Prevalence Rates.....		10
D. Assessing Change Over Time; Screening.....		11
E. Missing Data .....		12
F. Standard Errors.....		12
3. Prevalence of Food Security, Discussion and Summary Tables.....		14
A. Prevalence of Food Security, 1998 .....		14
B. Prevalence of Food Security, 1999 .....		17
C. Prevalence of Experiences and Behaviors Represented by the Items in the Food Security Scale (1998 and 1999) .....		21
D. Prevalence of Food Insecurity and Hunger among Households with Children, 1998.....		22
E. Prevalence of Food Insecurity and Hunger among Households with Children, 1999 .....		25
F. Prevalence of Food Insecurity with Hunger among Households with Children, 1995-1997.....		26
G. Changes in Prevalence of Food Insecurity and Hunger Between 1995 and 1999 .....		28
4. Prevalence of Food Security, Detailed Tables .....		34
A. Prevalence of Food Security Among Households.....		35
A.1 Household Food Security Status, by Selected Household Characteristics, 1998.....		36
A.2 Number of Adults by Food Security Status of Household, by Selected Household Characteristics, 1998 .....		37
A.3 Household Food Security Status, by Selected Household Characteristics, 1999.....		38

A.4	Number of Adults by Food Security Status of Household, by Selected Household Characteristics, 1999.....	39
A.5	Food Security Scale Item Responses, 1998 and 1999 .....	40
A.6	Food Security Scale Item Responses Among Households with Children, 1998 and 1999.....	41
A.7	Food Security Scale Item Responses, 1998 and 1999 (based on data adjusted to be comparable to 1995-1997).....	42
A.8	Food Security Scale Item Responses Among Households with Children, 1998 and 1999 (based on data adjusted to be comparable to 1995-1997).....	43
B.	Prevalence of Food Insecurity and Hunger Among Households with Children.....	44
B.1	Food Insecurity and Hunger Among Households with Children, by Selected Household Characteristics, 1998....	45
B.2	Number of Children in Households with Food Insecurity and Hunger, by Selected Household Characteristics, 1998.....	46
B.3	Food Insecurity and Hunger Among Households with Children, by Selected Household Characteristics, 1999....	47
B.4	Number of Children in Households with Food Insecurity and Hunger, by Selected Household Characteristics, 1999.....	48
B.5	Households With Hunger Among Children, by Selected Household Characteristics, 1995.....	49
B.6	Households With Hunger Among Children, by Selected Household Characteristics, 1996.....	50
B.7	Households With Hunger Among Children, by Selected Household Characteristics, 1997.....	51
B.8	Number of Children in Households with Hunger Among Children, by Selected Household Characteristics, 1995.....	52
B.9	Number of Children in Households with Hunger Among Children, by Selected Household Characteristics, 1996.....	53
B.10	Number of Children in Households with Hunger Among Children, by Selected Household Characteristics, 1997.....	54
C.	Estimates of Change in Household Prevalence, 1995-1999 .....	55
C.1	Household Food Security Status, by Selected Household Characteristics, 1998 (based on data adjusted to be comparable to 1995-1997) .....	56
C.2	Number of Adults by Food Security Status of Household, by Selected Household Characteristics, 1998 (based on data adjusted to be comparable to 1995-1997) .....	57

C.3	Household Food Security Status, by Selected Household Characteristics, 1999 (based on data adjusted to be comparable to 1995-1997) .....	58
C.4	Number of Adults by Food Security Status of Household, by Selected Household Characteristics, 1999 (based on data adjusted to be comparable to 1995-1997) .....	59
C.5	Change in Household Food Security, Food Insecurity and Hunger Status, by Selected Household Characteristics, 1996-1998 (based on data adjusted to be comparable to 1995-1997) .....	60
C.6	Change in Household Food Security, Food Insecurity and Hunger Status, by Selected Household Characteristics, 1995-1999 (based on data adjusted to be comparable to 1995-1997) .....	61
C.7	Change in Household Food Security, Food Insecurity and Hunger Status, by Selected Household Characteristics, 1997-1999 (based on data adjusted to be comparable to 1995-1997) .....	62
C.8	Change in Prevalence of Hunger Among Children, by Selected Household Characteristics, (1996-1998, 1995-1999, 1997-1999) (based on data adjusted to be comparable to 1995-1997) .....	63
D.	Standard Errors of All Food Security Prevalence Rates .....	64
D.A.1	Standard Errors of Household Food Security Status by Selected Household Characteristics, 1998 .....	65
D.A.2	Standard Errors of Number of Adults by Food Security Status of Household, by Selected Household Characteristics, 1998 .....	66
D.A.3	Standard Errors of Household Food Security Status by Selected Household Characteristics, 1999 .....	67
D.A.4	Standard Errors of Number of Adults by Food Security Status of Household, by Selected Household Characteristics, 1999 .....	68
D.A.5	Standard Errors of Food Security Scale Item Responses, 1998 and 1999 .....	69
D.A.6	Standard Errors of Food Security Scale Item Responses among Households with Children, 1998 and 1999 .....	70
D.A.7	Standard Errors of Food Security Scale Item Responses, 1998 and 1999 (based on data adjusted to be comparable to 1995-1997) .....	71
D.A.8	Standard Errors of Food Security Scale Item Responses among Households with Children, 1998 and 1999 (based on data adjusted to be comparable to 1995-1997) .....	72

D.B.1	Standard Errors of Food Insecurity and Hunger Among Households With Children, by Selected Household Characteristics, 1998 .....	73
D.B.2	Standard Errors of Number of Children in Households with Food Insecurity And Hunger, by Selected Household Characteristics, 1998 .....	74
D.B.3	Standard Errors of Food Insecurity and Hunger Among Households With Children, by Selected Household Characteristics, 1999 .....	75
D.B.4	Standard Errors of Number of Children in Households with Food Insecurity And Hunger, by Selected Household Characteristics, 1999 .....	76
D.B.5-7	Standard Errors of Food Insecurity and Hunger Among Households With Children, by Selected Household Characteristics, 1995, 1996, 1997 .....	77
D.B.8-10	Standard Errors of Number of Children in Households with Food Insecurity and Hunger, by Selected Household Characteristics, 1995, 1996, 1997 .....	78
D.C.1	Standard Errors of Household Food Security Status, by Selected Household Characteristics, 1998 (based on data adjusted to be comparable to 1995-1997) .....	79
D.C.2	Standard Errors of Number of Adults by Food Security Status of Household, by Selected Household Characteristics, 1998 (based on data adjusted to be comparable to 1995-1997) .....	80
D.C.3	Standard Errors of Household Food Security Status, by Selected Household Characteristics, 1999 (based on data adjusted to be comparable to 1995-1997) .....	81
D.C.4	Standard Errors of Number of Adults by Food Security Status of Household, by Selected Household Characteristics, 1999 (based on data adjusted to be comparable to 1995-1997) .....	82
End Notes .....		83
References .....		84

## EXECUTIVE SUMMARY

Since 1995, data from the Food Security Supplement to the Current Population Survey (CPS) have been analyzed annually as part of the Food Security Measurement Project. This report is the third in a series of detailed statistical reports on food security, insecurity, and hunger in U.S. households. It provides estimates of the prevalence of food insecurity and hunger in U.S. households in 1998 and 1999, along with the prevalence of food insecurity in households with children, and of hunger among children in those households (in 1995 through 1999), using a child-specific scale. Prevalence rates are reported at the national level, along with breakdowns by household structure, race, ethnicity, income, metropolitan residence, and region. This report also provides an assessment of the changes in prevalence of food insecurity and hunger for selected periods between 1995 and 1999.

The following highlights some of the key findings detailed in this report.

### **Prevalence of Food Insecurity and Hunger, 1998 and 1999**

In 1998, 88.2 percent of all U.S. households were food secure throughout the entire year. Household food security was not attained at all times for approximately 12 million U.S. households. More than half of these were households with children (6.7 million). About 22 million adults and 14 million children lived in these food insecure households. Included among households classified as food insecure are those classified as “food insecure with hunger.” In these households, one or more members were hungry at some time during the year as a result of inadequate food supplies or resources for food. Included among the food-insecure households were 3.8 million classified as food insecure with hunger. About 6.5 million adults (3.3 percent) lived in food insecure households with hunger.

In 1999, 89.9 percent of all U.S. households were as food secure throughout the entire year. Food insecurity was registered by 10.5 million U.S. households again with slightly more than half being households with children (5.6 million households). Living in these food insecure households were 18.9 million adults and 12.1 million children. In 1999, 3.1 million households were food insecure with hunger, and these households included 5.1 million adults.

### **Prevalence of Hunger Among Children**

In 1998, 331,000 households (0.9 percent of all households with children present) were food insecure with hunger among both adults and children. Approximately 716,000 children lived in these most severely food insecure households. Not all of these children experienced hunger, but either they or another child in the household did.

In 1999, about 219,000 households (0.6 percent of all households with children) were food insecure with hunger among both adults and children. About 511,000 children lived in these 219,000 households.

Similar analyses for 1995 through 1997 indicate that in 1995 and 1996 approximately one percent of all households with children were food insecure with hunger among children. In 1997, less than one percent (0.8 percent) of households with children were food insecure with hunger among children.

### **Prevalence of Food Insecurity Among Subpopulations, 1998 and 1999**

While the food security prevalence rates were near the national average for many subgroups in the U.S. in both 1998 and 1999, some groups experienced notably higher rates of food insecurity and hunger. These included single-woman headed households with children, Black households, Hispanic households and Households with incomes below the poverty line. For several other subgroups, food insecurity and hunger were substantially lower than the national average rate: These included households with 2 adults and no children, households in which elderly people lived alone, households which included elderly people, households with income at or above 185% of the poverty line, and white, non-Hispanic households.

### **Changes in Prevalence of Food Insecurity and Hunger Between 1995 and 1999**

Overall the proportion of households registering food insecurity declined by 1.6 percentage points from 1995-1999, and the percentage classified as food-insecure with hunger declined by 1.1 percentage points. Over the same period, the prevalence food insecurity with hunger among children declined 0.5 percentage points. The improvements in food security extended to almost all types of households and all regions of the country, including the groups with the highest rates of food insecurity and hunger.

## 1. INTRODUCTION

This is the third in a series of detailed statistical reports on food security, insecurity, and hunger in U.S. households. It reports on the prevalence of food insecurity and hunger in U.S. households in 1998 and 1999 based on nationally representative surveys conducted by the U.S. Census Bureau. The report provides national-level prevalence rates as well as breakdowns by household structure, race, ethnicity, income, metropolitan residence, and region.

Preceding reports in the series were:

- *Household Food Security in the United States in 1995, Summary Report of the Food Security Measurement Project.* (Hamilton, W., et al, 1997).
- *Household Food Security in the United States, 1995-1997: Technical Issues and Statistical Report.* (Ohls, J., L. Radbill, and A. Schirm, 2001).

In addition, overview reports were published as follows:

- *Household Food Security in the United States, 1995-1998, Advance Report.* (Bickel, G., S. Carlson, and M. Nord, 2000)
- *Household Food Security in the United States, 1999.* (Andrews, M., M. Nord, G. Bickel and S. Carlson, 2000).
- *Prevalence of Food Insecurity and Hunger, by State, 1996-1998.* (Nord, M., K. Jemison, and G. Bickel, 1999).
- *Measuring the Food Security of Children in U.S. Households, 1995-1999.* (Nord, M. and G. Bickel, 2002).

For more than 50 years the Federal government has administered various programs to reduce hunger in America. Although various nutrition-related and program specific surveys have been used throughout the years to monitor the success of these programs and the degree to which people in the United States consume adequate amounts of food, until 1995 there wasn't a succinct measure of hunger and food security used in these surveys. The Federal interagency food security measurement project was organized to address the need for a standardized mechanism and instrument for measuring and obtaining data on the prevalence of food insecurity or food sufficiency in the U.S. Their



efforts were based on prior work conducted in the early 1990's that defined the concept of food security and developed underlying individual and household indicators (Campbell, 1991; Cohen and Burt, 1990, Radimer et al., 1992 and Wehler et al., 1992). Food security measurement has been guided by these concepts and the definitions developed by an expert working group of the American Institute of Nutrition that were published by the Life Sciences Research Office (LSRO) of the Federation of American Societies for Experimental Biology (Anderson, ed. 1990). These are as follows:

- ***Food Security.*** “Access by all people at all times to enough food for an active, healthy life. Food security includes at a minimum: (1) the ready availability of nutritionally adequate and safe foods, and (2) an assured ability to acquire acceptable foods in socially acceptable ways (e.g., without resorting to emergency food suppliers, scavenging, stealing, or other coping strategies).”
- ***Food Insecurity.*** “Limited or uncertain availability of nutritionally adequate and safe foods or limited or uncertain ability to acquire acceptable foods in socially acceptable ways.”
- ***Hunger.*** “The uneasy or painful sensation caused by a lack of food. The recurrent and involuntary lack of access to food. Hunger may produce malnutrition over time...hunger...is a potential, although not necessary, consequence of food insecurity.”

Beginning in 1992, a Federal interagency project team began a systematic effort to develop a common battery of questions on food insecurity that could be administered regularly on Government-conducted national surveys as well as on state and local surveys. The culmination of their work was a survey module that was fielded for the first time as a new Food Security Supplement to the Current Population Survey (CPS) in April 1995. These questions obtained information about various aspects of food insecurity, as experienced in both the previous 30 days and the previous 12 months. To ensure that respondents are reporting on actions or concerns that result from financial constraints, every question includes a phrase such as “because we couldn't afford it” or “because there wasn't enough money for food”. It is recognized that there may be other valid reasons for household food insecurity, including functional ability and mobility issues faced by isolated elderly or chronically ill people. However, the measure does not capture food insecurity resulting solely from these non-financial circumstances. Since

1995, the Food Security module has been collected annually as the key component of a supplement to the CPS, alternating between Spring and Fall.

**A. The Food Security Measurement Project (Data Analysis for 1995-1997)**

Abt Associates worked closely with the Federal interagency food security project team to analyze the 1995 CPS food security supplement data. This team's first objective was to develop and test a scale that measured the severity of food insecurity for each household. The scale was developed using an Item Response Theory (IRT) model, which posits an underlying latent variable (in the present context, food insecurity and hunger) that cannot be observed directly but that can be estimated from respondent answers to a set of instrument items. The statistical model assigns a relative "severity" to each of the 18 survey questions on which the scale is based, ranging from such low-severity items as whether the respondent "worried whether our food would run out" to severe items, such as a child skipping a meal because no food was available. Taken together, these severity-level measures establish the measurement scale, which effectively captures the full range of severity of food insecurity as experienced in U.S. households. Each household's food security scale score is computed on the basis of the total number of affirmative answers to the 18 increasingly severe food security questions (or 10 questions if no children are present in the household). This scale is then divided into ranges of severity that classify households in the following categories:

- **Food secure:** Households show no, or minimal, evidence of food insecurity.
- **Food insecure with no hunger evident:** Food insecurity is evident in household concern about adequacy of household food supply and the adjustments made by the household in managing their supplies, including reducing the quality of food and increasing unusual coping patterns. There is little or no reduction in household members' food intake.
- **Food insecure with hunger evident:** Adults in the household have reduced their food intake to an extent that implies that they have repeated experiences of the physical sensation of hunger.

In the report on 1995 data, the third category was subdivided into two categories. In the category "food insecure with hunger (moderate)" the hunger experiences were

usually limited to the adults in the household. The category “food insecure with hunger (severe)” included hunger experienced by children in the household. It was defined as:

- **Food insecure with severe hunger evident:** For households with children, this level implies that the children’s food intake has been limited to an extent that the children have repeated experiences with the physical sensation of hunger. For households without children and for adults living in households with children, this level implies a more severe level of adult hunger.

The more severe category was specifically intended to identify households with hunger among children. In subsequent reports (on 1996 through 1999 data), the two hunger categories were combined because it was found that the “severe” category did not reliably identify households with hunger among children. In this report as well, the two household-level hunger categories are combined, and a separate child-specific scale is used to identify households with hunger among children.

It is important to note that the scale represents the food security status of a household, not of specific individuals within the household. Correspondingly, if a household’s status is reported as “food insecure with hunger” it does not mean that all members of the household necessarily experienced hunger but that one or more members of the household had this experience at some time within the referenced time period.

The food security scale, as developed from the 1995 data, was found to perform quite well on standard tests of statistical reliability, and the model-based ranking of food security questions on which it is based has strong intuitive face validity. In addition, as compared with methods involving observing nutrient intake or nutrient availability, the food security scale represents an inexpensive approach to assessing food security for large populations, and it provides an assessment tool that covers a longer period than just a day or a week.

Another important objective of the food security analysis was to produce estimates of the prevalence of household-level food insecurity for the 12-month time period. The overall prevalence of food insecurity among U.S. households (all levels of insecurity) was estimated at 11.9 percent, equivalent to 11.94 million households in 1995.

This varied by household type, from 19.5 percent among households with children under 6 years of age, to 5.9 percent among households with elderly members but no children (Hamilton, 1997). Estimates of prevalence were also made for various subpopulations based on household characteristics, area of residence, and geographic region. Given that this was the first study using this food security measure, comparisons to similar estimates were not possible. However, comparisons were made to other somewhat comparable work conducted on food security (Cohen, et al., 1993; Wehler et al., 1991; USDA Continuing Survey of Food Intakes by Individuals, 1989-1991), and prevalence rates were found to be consistent with these earlier estimates.

Continuing the work begun by Abt Associates, Mathematica Policy Research (MPR) analyzed the 1996 and 1997 CPS food security data (Ohls, et al., 1999, 2001). The objectives of their work included the validation of the original scale, testing the stability of the scale over time and across population subgroups, development of prevalence estimates, and the comparison of these estimates to those from 1995 data. Their results verified the stability and robustness of the scale and measurement techniques utilized. The order of the calibrated items varied only at two points with two sets of inversions: “children not fed balanced meals/adult cut or skipped meals” and “children fed few, low-cost foods/respondent not eating balanced meals.” The size of these changes was small and was not substantively significant. They report that, when tracked over time, food security did not change substantially from 1995 to 1996, but did improve significantly in 1997.

The Food Security core survey module is already being used in several other surveys including: the 5-year longitudinal Survey of Program Dynamics, the Early Childhood Longitudinal Study, and the 4<sup>th</sup> National Health and Nutrition Examination Survey (NHANES-4). The core module is also being used by states and local groups to assess the food security status of the households within their communities.

## **B. The Food Security Measurement Project (Data Analysis for 1998-1999)**

The work conducted on 1995-1997 data suggested the need to explore some additional issues, including developing methods to measure the food security status of individuals in a household and developing a scale that is appropriate for measuring the food security of children. Methods for measuring individuals' food security experiences are under development in connection with collection and analysis of data from NHANES IV. Work on the development of a children's food security scale is currently being conducted by USDA, with some results reported in this paper.

The household scale, whether with three or four categories, falls short of adequately describing the prevalence of hunger among children in a household. When the scale was first developed, the fourth category, "food insecure with severe hunger", was intended to provide a proxy for children's hunger in U.S. households. However, households in which children are experiencing hunger may not reach the level of severity of hunger among adults to be included in this fourth category and thus may be under-represented. On the other hand, households falling into this most severe category also include households with children in which only the adults are experiencing more severe levels of hunger and thus the proxy measure could also over-represent the prevalence of children's hunger. In large part, these distortions are related to the age of children in the household. While young children are usually protected from hunger even when adults experience quite severe food deprivation, older children are often treated more like adults and may experience more food insecurity with hunger than the younger children in the household.

To address this issue, a new children's food security scale has been developed (Nord and Bickel, 2001; Nord and Bickel, 2002). The children's food security scale is calculated from the eight items that relate specifically to children's experiences with food and hunger. A household affirming five or more of the eight child-referenced items is considered to be food insecure with hunger among children.

This report complements the statistics presented in earlier reports based on 1998 and 1999 data by providing:

- additional detail on prevalence estimates of food security, food insecurity, and hunger, at the household-level for all households, and for the adults in those households;
- estimates of the prevalence of food insecurity in households with children, and of hunger among children in those households, using a child-specific scale;
- an assessment of the changes in prevalence of food insecurity and hunger for selected periods between 1995 and 1999; and,
- standard errors for all prevalence and change estimates.

The report begins with a descriptive methodology chapter, and is followed by the an overview of the prevalence of food security, food insecurity and hunger. Following this, the final chapter provides detailed tables, presenting all relevant statistics and their standard errors.

A separate technical report, *Household Food Security in the United States, 1998 and 1999: Technical Report* (Cohen, et. al., 2002), on the analysis of the 1998 and 1999 Food Security Supplement Data includes: a detailed review of the methodology used for data analysis; a discussion on the balanced repeated replication techniques used to calculate standard errors; an assessment of the use of generalized variance functions (GVFs) developed by the Census Bureau for estimating standard errors; an assessment of the influence of the alternation of survey periods between Spring and Fall for the 1995-1999 CPS Supplement; and a presentation of 1998 and 1999 item calibrations and household scores developed through the use of IRT modeling and a discussion on the impact of different IRT modeling applications on food security analysis.

## **2. METHODOLOGY**

The methodology and data sources used to derive estimates of the number of households experiencing food security, food insecurity and hunger are similar to those described in previous reports. This chapter presents details on these sources and analytical methods.

### **A. The Current Population Survey**

The data analyzed in this report are from the Food Security Supplement to the Current Population Survey (CPS). The CPS is a national labor force study conducted by the U.S. Census Bureau for the Bureau of Labor Statistics. The survey, conducted on a monthly basis, includes a probability sample of about 50,000 households. To improve the reliability of estimates of month-to-month and year-to-year change, 8 panels are used to construct the sample each month. A sample unit (household) is interviewed for four consecutive months and then, after an 8-month rest period, for the same four months a year later. Each month a new panel of addresses, or one-eighth of the total sample, is introduced. The Food Security Supplement, which is sponsored by USDA, has been included once a year since 1995. However, the survey month has alternated between April and August/September with April being the survey time in 1995, 1997 and 1999, September being the survey time in 1996, and August in 1998.

### **B. Classifying Households by Food Security Status**

Given the documented stability of the measurement construct and the reliability of the methods used to calculate prevalence estimates of food security status from 1995 through 1997, the analysis of 1998 and 1999 CPS food security supplement data utilized these same methods and measures. The criteria presented below (Exhibit 2.1) are used to classify households by food security status. Affirmative answers are counted for each household and the household's food security status is assigned based on that count. Households with children will have answered 18 items, while households without children will have answered only 10 items.

**EXHIBIT 2.1 HOUSEHOLD FOOD SECURITY CLASSIFICATION**

	<b>Households Without Children (10-item scale)</b>	<b>Households With Children (18-item scale)</b>
<b>Food Secure, No Indication of Food Insecurity*</b>	0 affirmatives	0 affirmatives
<b>Food Secure, but with some Indications of Food Insecurity*</b>	1, or 2 affirmatives	1, or 2 affirmatives
<b>Food Insecure</b>	3 or more affirmatives	3 or more affirmatives
<b>Food Insecure with Hunger</b>	6 or more affirmatives	8 or more affirmatives

\*National statistical reports, including the present one, combine these two categories into one “food secure” category.

The recently developed children’s food security scale is used to classify households with children as to whether or not the children in the household were hungry because there was not enough money for food.

Children may be affected by levels of food stress well below the level of severity represented by the classification “food insecure with hunger among children.” Currently, work is being conducted to identify an appropriate threshold at a lower level of severity on the children’s scale that will identify households in which children’s normal eating patterns have been substantially disrupted, even if the reduction in food intake by children in that household has not been severe enough to result in hunger among the children. Since that work has not yet been completed, a broader picture of children’s food situation is presented in the present report by combining information from the household food security scale and the children’s hunger scale. The combined tabulation identifies households that are food secure, those that are food insecure without hunger, those that are food insecure with hunger among adults, but not children, and those that are food insecure with hunger among both adults and children. The parameters for the combined tabulation are presented in Exhibit 2.2.



**Exhibit 2.2: Parameters for Tabulation of Food Security Status of Households with Children, Combining Information from the Household Food Security Scale and the Children’s Food Security Scale**

<b>Food Security Category</b>	<b>Category Parameters</b>
Food Secure	0-2 items affirmed
Food Insecure without Hunger	3-7 items affirmed
Food Insecure with Hunger Among Adults But Not Children	8 or more items affirmed, including 0-4 child items
Food Insecure with Hunger Among Adults and Children	8 or more items affirmed, including 5 or more child items

Theoretically, the food insecure with hunger category might have been divided into three categories (food insecure with hunger among adults and not children, food insecure with hunger among adults and children, and food insecure with hunger among children and not adults). However, there were no cases in which households reported hunger among children and not adults. Thus, the tables for households with children do not include this category.

It is important to keep in mind that the results do not directly represent the total *number* of children who have experienced hunger or food insecurity. The questions do not specifically ask how many of the children living in the household have had food insecurity or hunger experiences, but ask whether any children living in the household have had such experiences. Thus the results represent either the *number of households* in which children have experienced hunger or the *number of children living in such households* (regardless of whether or not they themselves have directly experienced hunger).

**C. Weighting and Prevalence Rates**

The CPS assigns weights to each household and persons in those households so that the interviewed sample represents the total national non-institutionalized population. Weights are first assigned based on probability of selection into the sample and are then adjusted to match population controls for selected demographic characteristics at State

and national levels. All prevalence calculations use household weights adjusted for supplement non-response.

#### **D. Assessing Change Over Time; Screening**

The Food Security Supplement has been included in the Current Population Survey yearly since 1995. However, the data have not been collected in the same month in all years. The dates of collection were as follows: April 1995; September 1996; April 1997; August 1998; and April 1999. Although several comparisons have been made across the five-year time period, an analysis of the data indicates that the season in which the survey was conducted affected the annual prevalence estimates of food insecurity and hunger (see technical report, *Household Food Security in the United States, 1998 and 1999: Technical Report*, Cohen, et al., 2002). Therefore, to assess change over time, prevalence rates for 1998 and 1999 are compared to earlier years' surveys conducted in the same season; 1998 is compared to 1996, and 1999 is compared to 1995 and 1997. Tests of significance were conducted for all changes for which standard errors were available (1995, 1998 and 1999); these are reported in chapter 3, as relevant, but are not tabled. Estimates of change were assessed for statistical significance at the 90 percent confidence level.

To ensure comparability of prevalence estimates across years, data in each year had to be adjusted for differences in survey screening. Screening procedures were used to reduce respondent burden by skipping inappropriate questions -- or questions with known responses. This avoided asking any of the food security scale questions to higher-income households with no preliminary signs of food insecurity. Households screened out after the first few questions were classified as food secure. Although the 18 questions used in the CPS have remained the same since first implemented in 1995, the screening rules have been changed over time. In particular, different preliminary screens were tested in each of the first three years of the survey. Analyses have shown that a small proportion of the households screened out in years with more restrictive screens would have been classified as food-insecure using the screening procedures applied in other years (Bickel, Carlson and Nord, 1999).

In 1998, further changes in screening procedures and question order were introduced to minimize bias while keeping respondent burden low. The 1998 screening and question order remained unchanged in 1999, 2000 and 2001, and are expected to continue as the standard. To make prevalence rates comparable across years, “common screening” rules have been developed to be applied to the data after collection in all years (see *Household Food Security in the United States, 1998 and 1999: Technical Report* (Cohen, et. al., 2002) for specific screening procedures implemented). The rules follow the most restrictive screening procedures. That is, they screen a household out if it would have been screened out under any year’s screening protocol.

The prevalence statistics presented in this report for 1998 and 1999 are generally based on data as collected in those years, with no post collection adjustment for screening differences. However, when comparisons are made to earlier years’ estimates the common screen rules are applied to the 1998 and 1999 data as well as to the earlier years’ data.

#### **E. Missing Data**

There are very few missing responses to food security items. Less than one percent of respondents declined to answer, or did not know the answer to, any item they were asked. If no valid answers were provided, the household was excluded from the analysis completely. If some valid responses were provided and some items were missing, standard procedures were followed to impute the missing responses as described in *Household Food Security in the United States, 1998 and 1999: Technical Report* (Cohen, et. al., 2002) and in *Guide to Measuring Household Food Security, Revised 2000* (Bickel, et. al., 2000).

#### **F. Standard Errors**

A key activity in assessing prevalence estimates is determining their precision. This is important in assessing the overall accuracy of the estimates and is necessary for determining whether estimated changes over time or differences between population subgroups are statistically significant. Balanced Repeated Replication (BRR) procedures

were used to compute standard errors for the food insecurity prevalence estimates from the CPS food security supplements. (See the technical report *Household Food Security in the United States, 1998 and 1999: Technical Report* (Cohen, et. al., 2002) for details on how the BRR methods were applied to these data.) Standard errors are reported for all 1998 and 1999 prevalence estimates and for children's hunger prevalence estimates calculated for 1995-1997.

Note that standard errors of the numbers of food secure and food insecure households for subpopulations differ, although the standard errors for the corresponding percents are identical. This occurs because the denominator – the total number of households in the subpopulation – is also estimated with some error. Thus, the standard error of the numerical estimate includes error associated with both the total number of households in the subpopulation as well as the proportion of those households that are secure or insecure.

### **3. PREVALENCE OF FOOD SECURITY**

This chapter presents an overview of estimated food security prevalence for the 12-month periods ending in August 1998 and April 1999. Section A presents 1998 prevalence estimates for the total U.S. population and for subgroups of the population. Section B presents the same for 1999. In Section C we present national prevalence estimates of conditions, experiences, and behaviors as represented by the individual items in the food security scale. Food security and hunger prevalence rates for households with children are presented in Section D for 1998, Section E for 1999 and in Section F for 1995-1997. The final section (Section G) presents estimates of change in national household prevalence of food insecurity and hunger from 1995 to 1999.

Summary tables are included in the text of this chapter. Detailed tables of prevalence rates for each analytic category, along with tables of standard errors are found in chapter 4. It should be noted that chapter 4 includes two sets of tables for most 1998 and 1999 statistics, one based on data as collected and the second based on data adjusted for cross-year comparability to account for differences in screening procedures. The latter should be used for comparisons to statistics from 1995-1997. Each section below begins by identifying the relevant tables in Chapter 4 and then presents an overview of key findings.

#### **A. Prevalence of Food Security, 1998**

##### ***1. Relevant Detailed Tables***

Tables A.1 and A.2 in chapter 4 present details on national prevalence of food security in 1998. Table A.1 presents statistics on household food security status, while table A.2 presents statistics on the number of adults by the food security status of the household. Statistics in both of these tables are based on data as collected. That is, the data were not adjusted to be comparable to 1995-1997. Standard errors for these statistics are reported in tables D.A.1 and D.A.2. Tables C.1 and C.2 in Chapter 4 present similar information but have been adjusted to be comparable to 1995-1997. The standard errors for these tables are reported in tables D.C.1 and D.C.2. Each table presents

statistics for various subgroups of the population categorized by household composition, race and Hispanic ethnicity, household income-to-poverty ratio, area of residence and census geographic region.

## **2. *Overview***

### Prevalence of Food Security Among All Households

In 1998 approximately 91 million households in the United States, 88.2 percent of all households, were food secure throughout the entire year (Table 3.1). Approximately 175 million adults (88.8 percent of all adults) and 57 million children (80.1 percent of all children) lived in food secure households.

Conversely, household food security was not attained at all times in 1998 for approximately 12 million U.S. households (11.8 percent of all households), more than half of which were households with children (6.7 million). About 22 million adults and 14 million children lived in these food insecure households.

Included among households classified as food insecure are those classified as “food insecure with hunger”. Those that are food insecure with hunger had one or more household members who were hungry at some time during the year as a result of inadequate food supplies or resources for food. In 1998, 3.8 million households were classified as food insecure with hunger, 1.6 million being households with children. About 6.5 million adults (3.3 percent) and 3.4 million children (4.9 percent) lived in food insecure households with hunger.

**TABLE 3.1 PREVALENCE OF FOOD SECURITY, INSECURITY AND HUNGER, 1998 and 1999**

	Total		Food Secure		Food Insecure					
	1,000	1,000	%	<u>All</u>		<u>Without Hunger</u>		<u>With Hunger</u>		
	1,000	1,000	%	1,000	%	1,000	%	1,000	%	
<b>All Households</b>										
<b>1998</b>	103,309	91,121	88.2	12,188	11.8	8,353	8.1	3,835	3.7	
<b>1999</b>	104,684	94,154	89.9	10,529	10.1	7,420	7.1	3,109	3.0	
<b>Adults, By the Food Security Status of the Households</b>										
<b>1998</b>	197,084	174,964	88.8	22,120	11.2	15,632	7.9	6,488	3.3	
<b>1999</b>	198,901	179,960	90.5	18,941	9.5	13,869	7.0	5,072	2.5	
<b>Children, By the Food Security Status of the Households</b>										
<b>1998</b>	71,282,	57,225	80.2	14,027	19.9	10,658	15.0	3,369	4.9	
<b>1999</b>	71,417	59,342	83.1	12,074	17.0	9,368	13.1	2,707	3.9	

Source: Tabulations of Current Population Survey, Food Security Supplement data.

### Prevalence of Food Security among Subgroups of the U.S. Population

While the food security prevalence rates were near the national average for many subgroups in the U.S., some groups experienced notably higher rates of food insecurity and hunger (Table 3.2 and Exhibit 3.1).

**Table 3.2: Prevalence of Food Insecurity and Hunger Among Selected Subgroups with Rates Above the National Average, 1998**

<b>Population Subgroup</b>	<b>Food Insecurity</b>	<b>Hunger</b>
Single-woman headed households with children	35.4%	10.6%
Black Households	24.3%	8.5%
Hispanic Households	25%	6.8%
Households below poverty	38%	13.6%

In 1998, households with children registered food insecurity at approximately twice the rate of households without children. Households living in central cities were more likely to experience food insecurity than households living in metropolitan areas outside the central city or in rural areas; 16.4% of households in central cities registered food insecurity compared to 9.3% of households in other metropolitan areas and 11.8% of households in rural areas. For several other subgroups, food insecurity and hunger were substantially lower than the national average rate (Table 3.3).

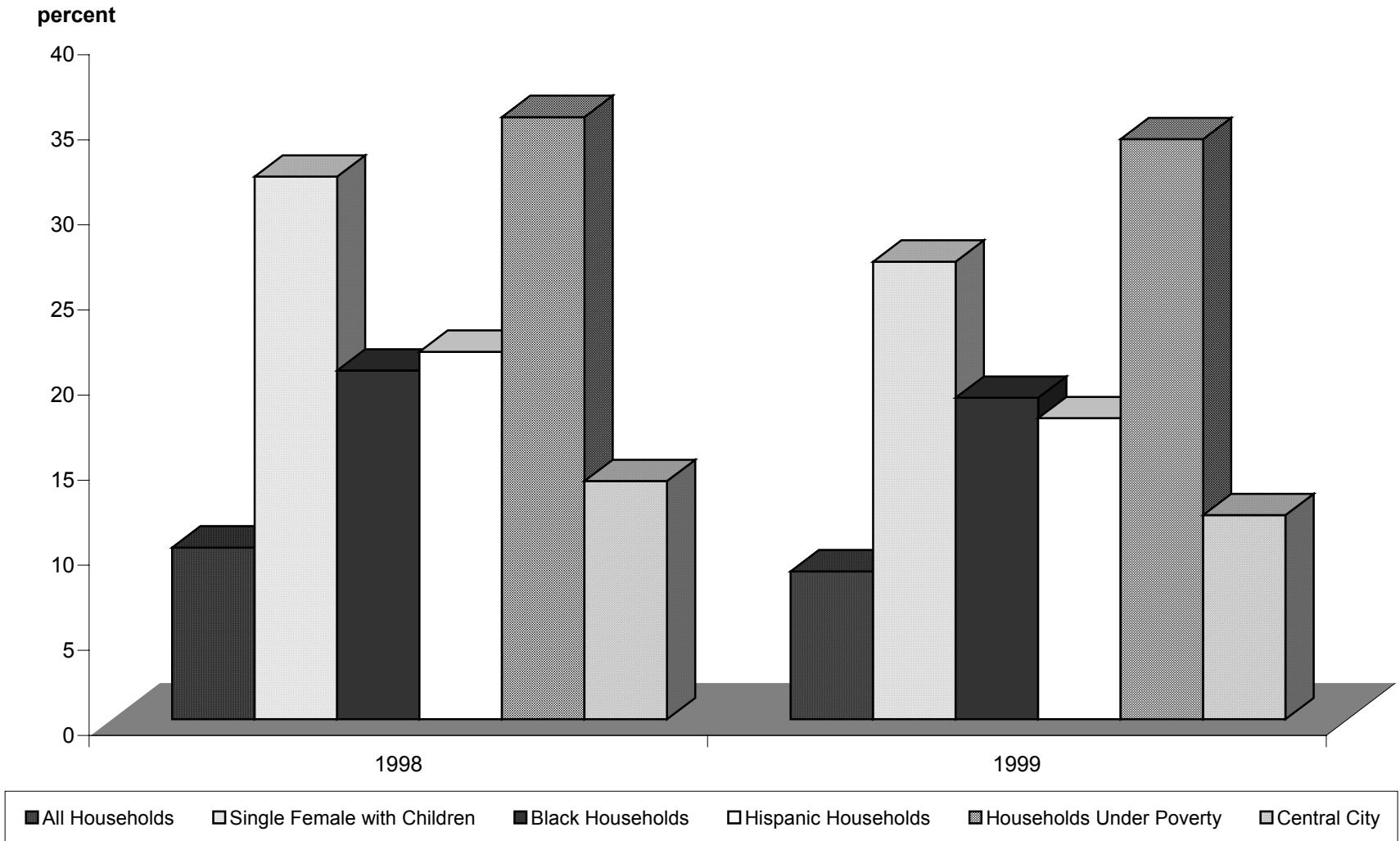
## **B. Prevalence of Food Security, 1999**

### **1. Relevant Detailed Tables**

Tables A.3 and A.4 in chapter 4 present details on national prevalence of food security in 1999. Table A.3 presents statistics on household food security status, while table A.4 presents statistics on the number of adults by the food security status of the household. Statistics in both tables are based on data as collected. That is, they have not been adjusted to be comparable to 1995-1997. Standard errors for these statistics are reported in tables D.A.3 and D.A.4. Tables C.3 and C.4 in Chapter 4 present similar



**Exhibit 3.1**  
**Prevalence of Food Insecurity for All Households and Selected Subgroups, 1998-1999**



**Table 3.3: Prevalence of Food Insecurity and Hunger Among Selected Subgroups with Rates Below the National Average, 1998**

<b>Population Subgroup</b>	<b>Food Insecurity</b>	<b>Hunger</b>
All Households	11.8%	3.7%
Households with 2 adults and no children	6.3%	1.4%
Households in which elderly people live alone*	6.3%	2.1%
Households which include elderly people*	6.4%	1.9%
Households with income at or above 185% of the poverty line	5.2%	1.4 %
White, Non-Hispanic households	8.2%	2.6%

\* *Elderly is defined as people 65 and older.*

information but have been adjusted to be comparable to 1995-1997. The standard errors for these tables are reported in tables D.C.3 and D.C.4. Each table presents statistics for various subgroups of the population categorized by household composition, race and Hispanic ethnicity, household income-to-poverty ratio, area of residence and census geographic region.

## **2. Overview**

### Prevalence of Food Security Among All Households

In 1999, 94 million U.S. households (89.9 percent of all households) were as food secure throughout the entire year (Table 3.1). Living in these food secure households were 180 million adults (90.5 percent of all adults) and 59 million children (83 percent of all children).

Food insecurity was registered by 10.5 million U.S. households (10.1 percent of all households), in 1999 again with slightly more than half being households with

children (5.6 million households). Living in these food insecure households were 18.9 million adults and 12.1 million children. In 1999, 3.1 million households were food insecure with hunger, with 1.3 million being households with children. Households classified as food insecure with hunger included 5.1 million adults and 2.7 million children.

Prevalence of Food Security among Subgroups of the U.S. Population

As in 1998, some subgroups in the U.S. experienced notably higher than average rates of food insecurity and food insecurity with hunger (Exhibit 3.1 and Table 3.4).

**Table 3.4: Prevalence of Food Insecurity and Hunger Among Selected Subgroups with Rates Above the National Average, 1999**

<b>Population Subgroup</b>	<b>Food Insecurity</b>	<b>Hunger</b>
Single-woman headed households with children	29.7%	8.1%
Black Households	21.3%	6.5%
Hispanic Households	20.8%	5.5%
Household below poverty	36.6%	12.2%

As in 1998, households with children registered food insecurity at approximately twice the rate of households without children. Households living in central cities were more likely to experience food insecurity than households living in metropolitan areas outside the central city or in rural areas. Households in central cities registered food insecurity at a rate of 13.9%, compared to households in other metropolitan areas (7.7%) and households in rural areas (10.1%).

For several other subgroups, food insecurity and hunger were substantially lower than the national average rate (Table 3.5):

**Table 3.5: Prevalence of Food Insecurity and Hunger Among Selected Subgroups with Rates Below the National Average, 1999**

<b>Population Subgroup</b>	<b>Food Insecurity</b>	<b>Hunger</b>
All Households	10.1%	3.0%
Households with 2 adults and no children	5.5%	1.0%
Households in which elderly people live alone *	6.3%	2.1%
Households which include elderly people *	5.9%	1.6%
Households with income at or above 185% of the poverty line	4.1%	1.0 %
White, Non-Hispanic households	7%	2.1%

\* *Elderly is defined as people 65 and older.*

**C. Prevalence of Conditions, Experiences and Behaviors Represented by the Items in the Food Security Scale (1998 and 1999)**

**1. Relevant Detailed Tables**

As described in chapter 1, the items included in the food security scale vary with respect to the severity of the conditional experience, or behavior they describe. One result and evidence of this variation across a range of severity is seen in the proportion of households that affirm the various items (see tables A.5 – A.8 in Chapter 4 for detailed statistics and tables D.A.5-D.A.8 for the respective standard errors).

**2. Overview**

In 1998, 16.6 percent of all households reported worrying that food would run out before they got money to buy more. Less than one percent responded that adults in the household did not eat for a whole day in three or more months. Similarly in 1999, these two questions were affirmed by 14.7 and 0.7 percent of households respectively.

Items referring specifically to behaviors and experiences of children represent more severe household food insecurity than corresponding items asked about adults or about anyone in the household (Table A.6). In 1998, 13.9 percent of households with children reported that they couldn't afford to eat balanced meals, but only 9.6 percent reported that they couldn't feed their children balanced meals. Similarly, 3.2 percent of adult respondents in households with children reported that they had been hungry but didn't eat because they couldn't afford more food, compared to 1.2 percent who reported the same experience for children. In 1.4 percent of households, adults went a whole day without eating because there was not enough money for food, while this rarely occurred for children (0.1 percent).

#### **D. Prevalence of Food Insecurity and Hunger among Households with Children, 1998**

##### ***1. Relevant Detailed Tables***

Tables B.1 and B.2 in chapter 4 present details on food security and hunger among households with children in 1998. Table B.1 presents statistics on household food security status, while table B.2 presents statistics on the number of children in households with food insecurity and hunger. Statistics in both tables are based on data as collected. That is, they have not been adjusted to be comparable to 1995-1997. The tables describe food insecurity and hunger using the categories described in Chapter 2: food insecure (all), food insecure without hunger, food insecure with hunger among adults but not children, and food insecure with hunger among adults and children. Each table presents statistics for various subgroups of the population, categorized by household composition, race and Hispanic ethnicity, household income-to-poverty ratio, area of residence and census geographic region. Standard errors are presented in tables D.B.1 and D.B.2. It is important to remember that the statistics presented on the number of children in households with hunger among children do not represent the total number of children in the United States who experienced hunger, but instead represent the number of children living in households in which one or more children were hungry. This reflects the fact that the questions asked of a respondent are worded to ask whether *any* child or children in the household experience specific food insecurity/hunger indicators, but not *which* children or *how many* of the children.

## 2. Overview

### Prevalence of Food Insecurity and Hunger Among Households with Children, 1998

In 1998, 1.3 million households with children present were food insecure with hunger among adults but not children (Table 3.6). Approximately 331,000 households were food insecure with hunger among both adults and children. Approximately 716,000 children lived in these most severely food insecure households. Not all of these children experienced hunger, but either they or another child in the household did.

### Food Insecurity and Hunger Among Subpopulations of Households with Children

In 1998, the groups experiencing notably higher rates of food insecurity and hunger among all households also registered higher rates among households with children (Table 3.7 and Exhibit 3.2).

**Table 3.7: Prevalence of Food Insecurity and Hunger in Households with Children for Selected Subgroups with Rates Above the National Average, 1998**

<b>Population Subgroup</b>	<b>Food Insecurity (with or without hunger)</b>	<b>Hunger Among Adults but Not Children</b>	<b>Hunger Among Adults and Children</b>
Single-woman headed households with children	35.4%	8.4%	2.2%
Black Households	30.9%	6.7%	1.7%
Hispanic Households	30.8%	5.4%	1.6%
Household below poverty	46.8%	11.0%	3.0%

**TABLE 3.6 PREVALENCE OF FOOD SECURITY, INSECURITY AND HUNGER AMONG HOUSEHOLDS WITH CHILDREN, 1998 and 1999**

	Total		Food Secure		Food Insecure				
	1,000	1,000	%	Without Hunger		With Hunger Among Adults but Not Children		With Hunger Among Adults and Children	
				1,000	%	1,000	%	1,000	%
<b>All Households with Children</b>									
<b>1998</b>	38,036	31,335	82.3	5,049	13.3	1,321	3.5	331	0.9
<b>1999</b>	37,885	32,291	85.2	4,340	11.5	1,035	2.7	219	0.6
<b>Children, By the Food Security Status of the Households</b>									
<b>1998</b>	71,282	57,225	80.2	10,658	15.0	2,653	3.9	716	1.0
<b>1999</b>	71,417	59,342	83.1	9,368	13.1	2,197	3.2	511	0.7

Source: Tabulations of Current Population Survey, Food Security Supplement data.

In 1998, households with children living in central cities were more likely to experience food insecurity than households with children living elsewhere. Almost one-fourth (24.5%) of households with children in central cities experienced food insecurity compared to 13.7% in other metropolitan areas and 19.0% in rural areas. Food insecurity among households with children was lower than the national average rate for households with income above 185% of the poverty line (7.1%) and White, Non-Hispanic households (12.4%).

## **E. Prevalence of Food Insecurity and Hunger Among Households with Children, 1999**

### ***1. Relevant Detailed Tables***

Tables B.3 and B.4 in chapter 4 present details on food security and hunger among households with children in 1999. Table B.3 presents statistics on household food security status, while table B.4 presents statistics on the number of children in households with food insecurity and hunger. Statistics in both tables are based on data as collected. That is, they have not been adjusted to be comparable to 1995-1997. Standard errors are presented in tables D.B.3 and D.B.4.

### ***2. Overview***

#### **Food Insecurity and Hunger Among All Households with Children**

In 1999, about 1 million households with children were classified as food insecure with hunger among adults but not children and 219,000 households were food insecure with hunger among both adults and children. About 511,000 children lived in these 219,000 households.

#### **Food Insecurity and Hunger Among Subpopulations of Households with Children**

As in 1998, the groups experiencing notably higher rates of food insecurity and food insecurity with hunger among all households in 1999 also registered higher rates among households with children (Exhibit 3.2 and Table 3.8).



**Table 3.8: Prevalence of Food Insecurity and Hunger in Households with Children for Selected Subgroups with Rates Above the National Average, 1999**

<b>Population Subgroup</b>	<b>Food Insecurity (with or without hunger)</b>	<b>Hunger Among Adults but Not Children</b>	<b>Hunger Among Adults and Children</b>
Single-woman headed households with children	29.7%	6.7%	1.4%
Black Households	26.1%	5.0%	1.0%
Hispanic Households	29.7%	5.1%	1.0%
Household below poverty	42.9%	9.2%	1.9%

In 1999, households with children living in central cities were more likely to experience food insecurity than households with children living elsewhere. Households with children in central cities experienced food insecurity at a rate of 21%, compared to 11.5% in other metropolitan areas and 15.1% in rural areas.

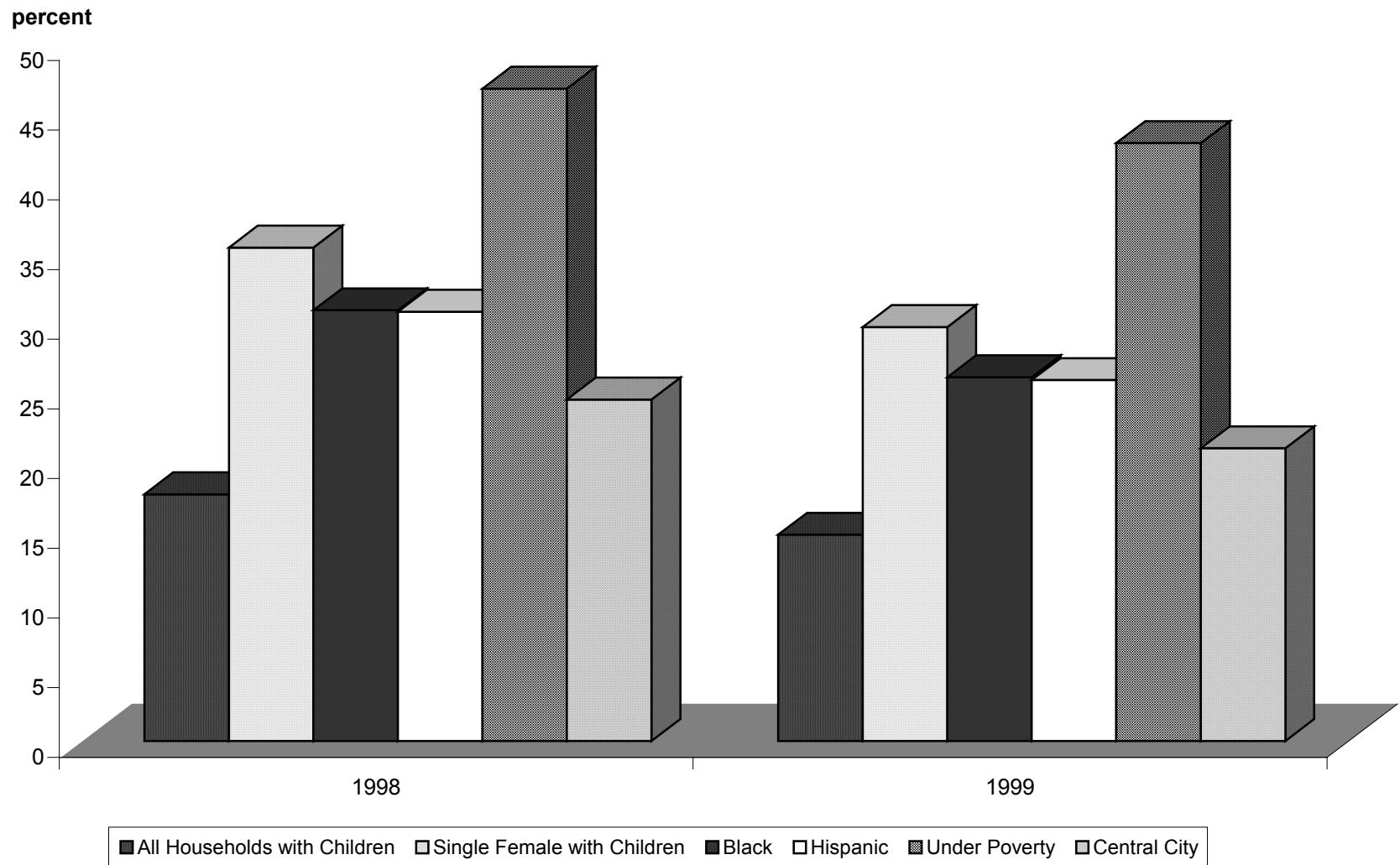
Food insecurity was lower than the national average rate among households with income above 185% of the poverty line (5.6%) and White, Non-Hispanic households (10.1%).

**F. Prevalence of Food Insecurity with Hunger Among Households with Children, 1995-1997**

**1. Relevant Detailed Tables**

Tables B.5 through B.10 in chapter 4 present details on hunger among children from 1995-1997. Tables B.5, B.6 and B.7 present statistics on the number of households with hunger among children for 1995, 1996 and 1997 respectively. Tables B.7, B.8 and B.9 present statistics on the numbers of children in those households for the same years. Statistics in both sets of tables are based on the children's hunger scale described in Chapter 2 and are based on data as collected. Prevalence rates of this most severe measured range of food insecurity are negligibly affected by screening differences across years. Thus, these statistics can be compared directly to those for 1998 and 1999 without

**Exhibit 3.2**  
**Prevalence of Food Insecurity Among All Households With Children and Selected Subgroups,**  
**1998 and 1999**



adjusting for differences in screening. Standard errors are presented in tables D.B.5-7 and D.B.8-10.

Prevalence of household-level food insecurity and of hunger were reported for these years in *Household Food Security in the United States, 1995-1998, Advance Report*. However, that report did not include statistics on the more severe category, hunger among adults and children.

## **2. Overview**

In 1995, approximately one percent (415 thousand households) of all households with children were food insecure with hunger among children. Approximately 887,000 children lived in these most severely food insecure households. The prevalence rate was similar in 1996: one percent (379 thousand households) of all households with children were classified as food insecure with hunger among children. About 917,000 children lived in these households. In 1997, less than one percent (0.8 percent) of households with children (305 thousand households) were food insecure with hunger among children. This included 651,000 children. As described above in Section D, the corresponding statistics for 1998 and 1999 were 0.9 percent and 0.6 percent, including 716,000 and 511,000 children respectively.

## **G. Changes in Prevalence of Food Insecurity and Hunger Between 1995 and 1999**

### **1. Relevant Detailed Tables**

To understand how household food security and insecurity prevalence rates have changed since the scale was first developed in 1995, selected prevalence rates in 1998 and 1999 are compared to prevalence rates in earlier years. Because of possible seasonal fluctuations (see next section) we limit the detailed cross-year comparisons to two-year and four year periods. Comparing to two years prior avoids bias due to any seasonal fluctuations, since data were collected in spring and fall in alternating years. Tables C.5-C.10 in Chapter 4 present the changes in prevalence rates for all households and groups of households for each of these time intervals. To ensure comparability, statistics in the

tables are based on data that have been adjusted for differences in screening procedures across years.

## 2. *Overview*

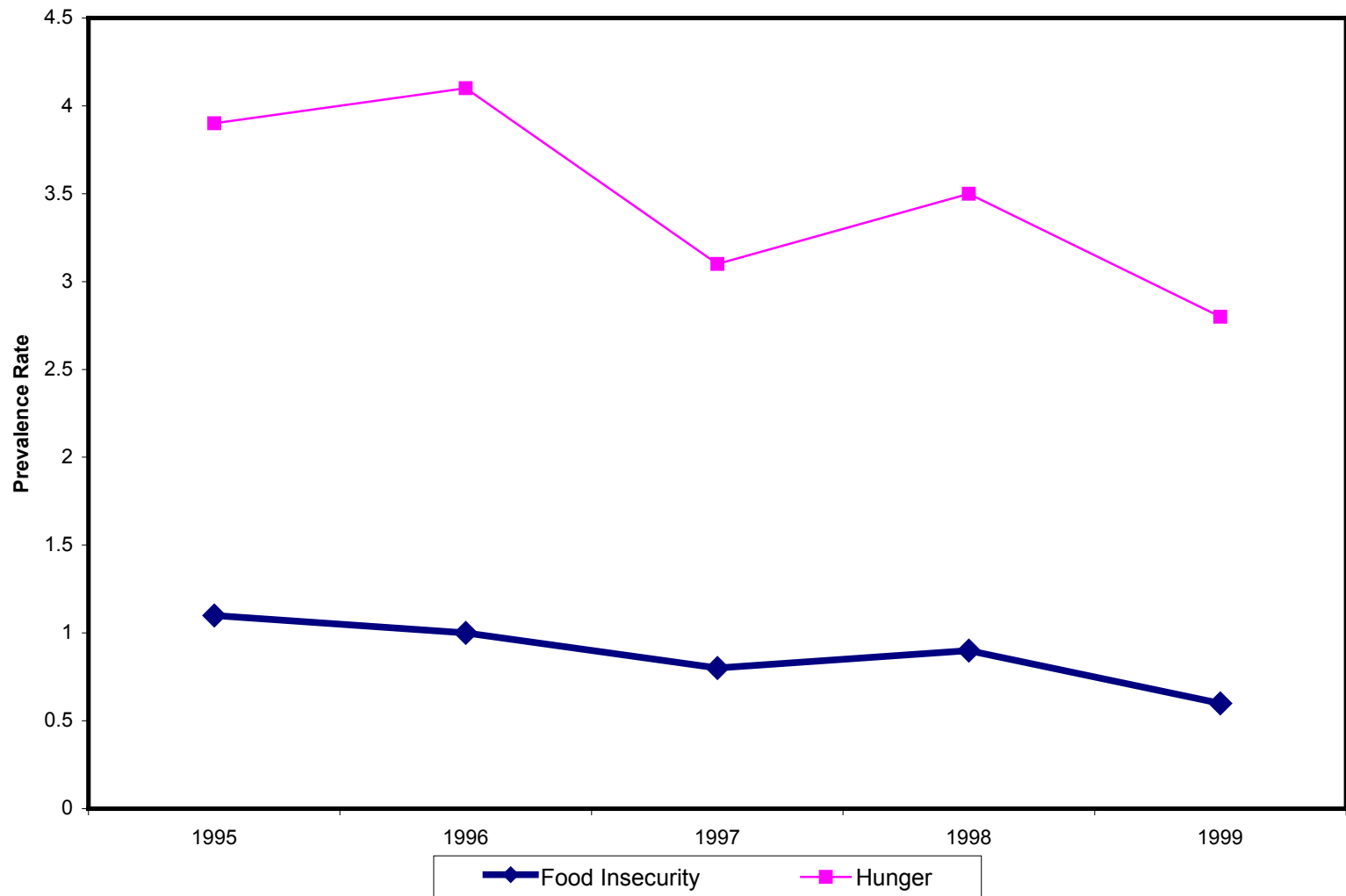
Overall the proportion of households registering food insecurity and hunger declined from 1995-1999 (Exhibit 3.3). However, the declines were not consistent across the years. In fact, food insecurity increased by 1.4 percentage points between 1997 and 1998. This increase was offset by a decline of 1.4 percentage point between 1998 and 1999. Overall, there was a statistically significant (with 90% confidence) decrease of 1.6 percentage points between 1995 and 1999. It is likely that the deviation from a smooth downward trend across years reflects in part a seasonal component. Food security data collection occurred in April in 1995, 1997, and 1999 but occurred in September in 1996 and in August in 1998. The effect of survey season is explored in greater detail in *Household Food Security in the United States, 1998 and 1999: Technical Report* (Cohen, et. al., 2002).

Exhibit 3.4 presents trends in food insecurity for subpopulations of households. The subpopulation groups included in this exhibit registered higher rates of food insecurity than the national average. Prevalence of food insecurity for most of the groups followed a trend similar to that of all households, with somewhat larger year-to-year changes. The exception was low-income households. There were fewer low-income households in 1999 than in 1995 but the prevalence rate of food insecurity among them was the same or possibly somewhat higher in 1999 than in 1995. This is consistent with the assumption of a strong causal linkage between low income and food insecurity.

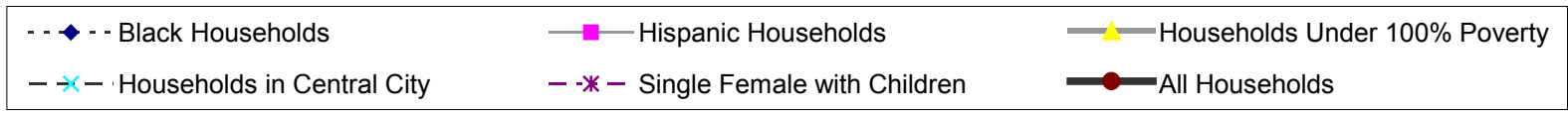
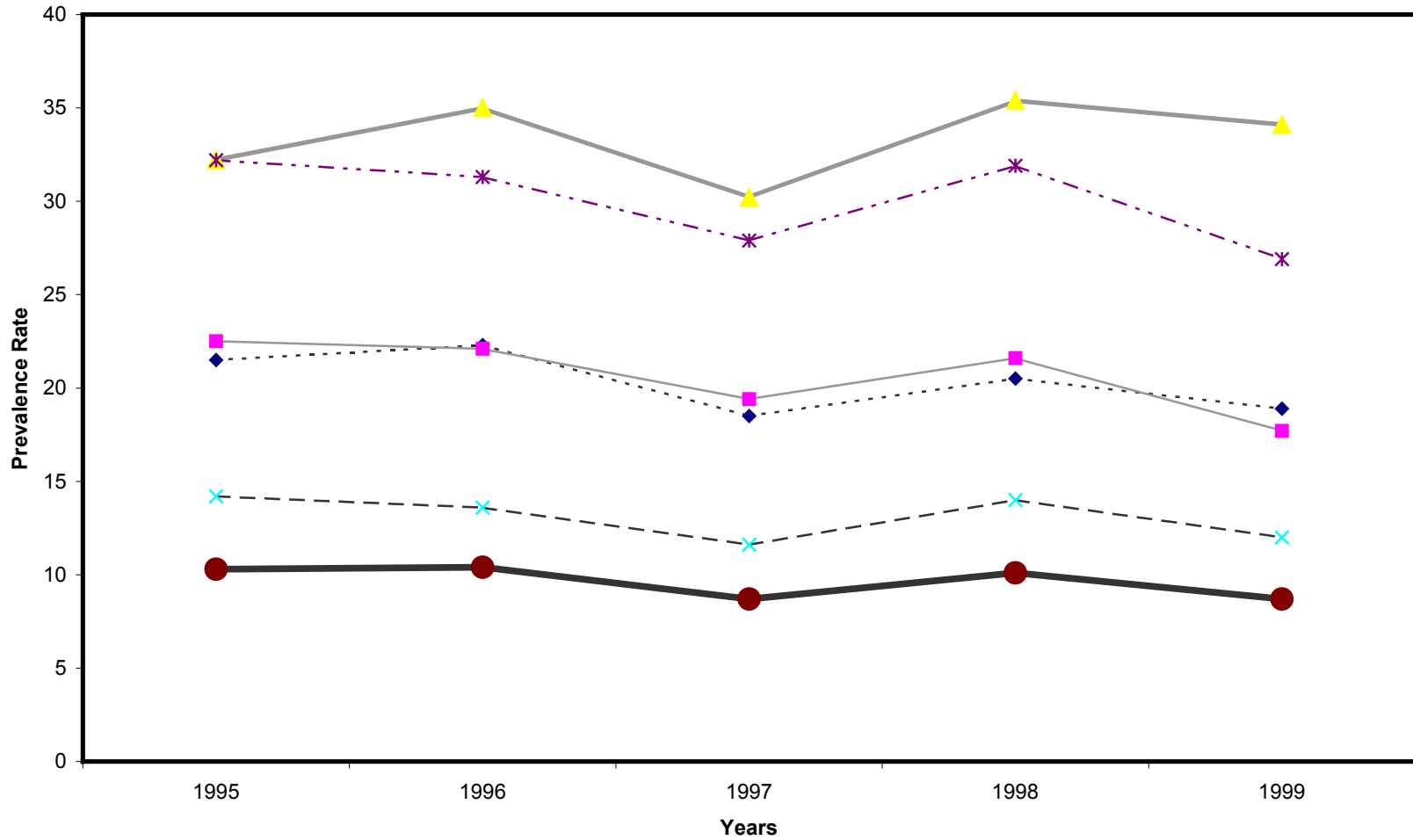
Between 1995 and 1999, for all households with children, the prevalence of food insecurity with hunger among children declined 0.5 percentage points (statistically significant at a 90% confidence level; Exhibit 3.5). Trends for selected subpopulations of households with children--the subgroups with higher food insecurity rates – are also presented in Exhibit 3.5. Most of the subpopulations registered statistically significant

declines in hunger rates from 1995 to 1999 ranging from 0.9 to 1.2 percentage points, with greater year-to-year fluctuations than those of all households as a group.

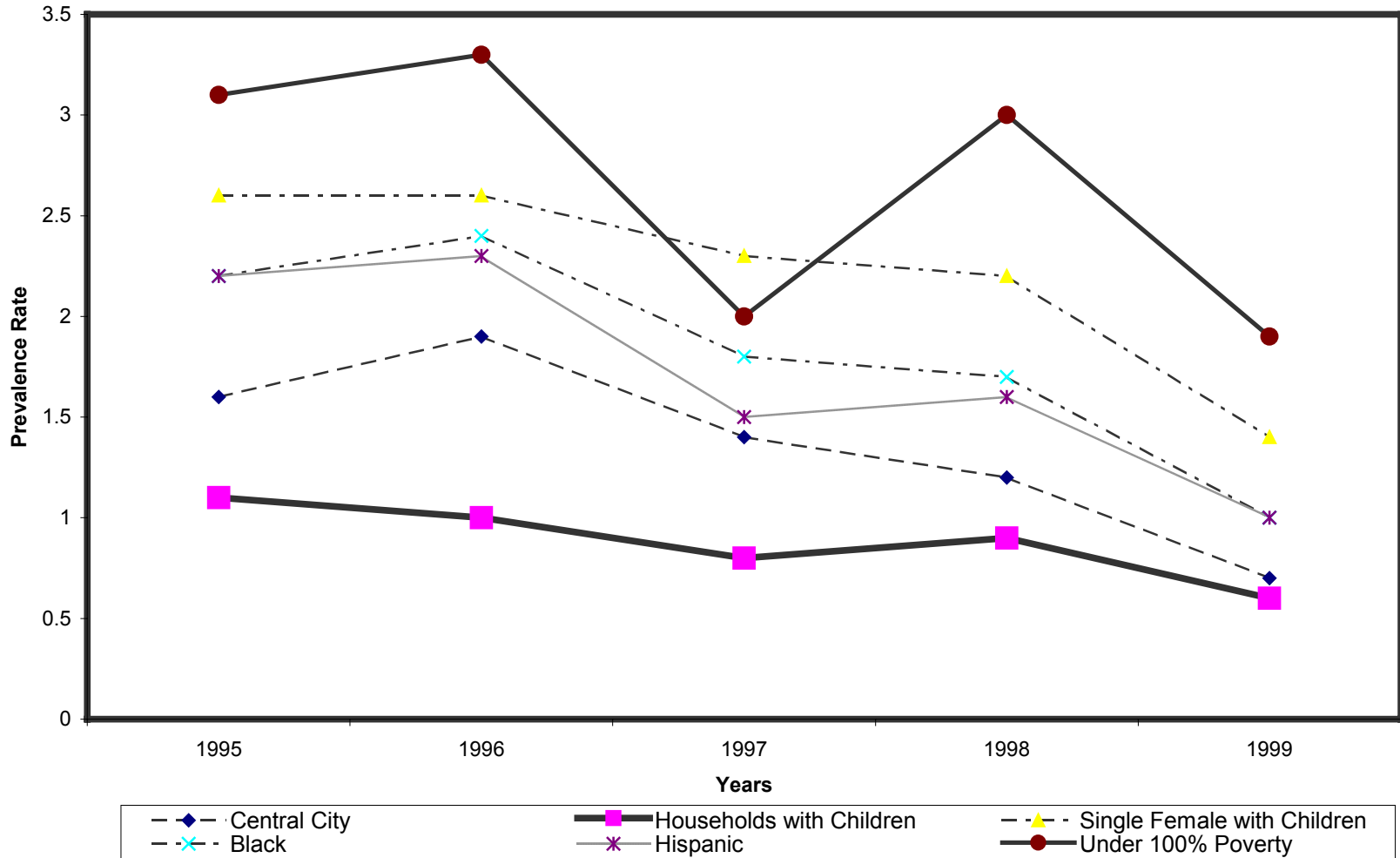
**Exhibit 3.3**  
**Prevalence of Household Food Insecurity and Hunger, 1995-1999**



**Exhibit 3.4**  
**Prevalence of Household Food Insecurity, All Households and Selected Subpopulations,**  
**1995-1999**



**Exhibit 3.5**  
**Prevalence of Food Insecurity with Hunger Among Children,**  
**All Households with Children and Subpopulations, 1995-1999**





#### **4. PREVALENCE OF FOOD SECURITY, DETAILED TABLES**

This chapter presents the detailed statistical tables summarized in the preceding chapter. Tables in Section A describe the prevalence rates of food security, food insecurity and hunger among all households and for selected subpopulations. Section B focuses on the prevalence of food insecurity and hunger among households with children. Estimates of change in household prevalence of food insecurity and hunger are presented in Section C and standard errors for all prevalence rates are presented in Section D.

**A: Prevalence of Food Security Among All Households**

**TABLE A.1**  
**Household Food Security Status by Selected Household Characteristics, 1998.<sup>1</sup>**

CHARACTERISTIC	TOTAL	FOOD SECURE			FOOD INSECURE					
		1,000	1,000	%	All		Without Hunger		With Hunger	
					1,000	%	1,000	%	1,000	%
<b>All Households</b>	103,309	91,121	88.2	12,188	11.8	8,353	8.1	3,835	3.7	
<b>Household Composition</b>										
With Children < 6	17,087	13,882	81.2	3,205	18.8	2,529	14.8	676	4.0	
With Children < 18	38,036	31,335	82.4	6,701	17.6	5,049	13.3	1,652	4.3	
Married Couple Families	26,306	23,284	88.5	3,022	11.5	2,468	9.4	554	2.1	
Female Head, No Spouse	8,807	5,692	64.6	3,115	35.4	2,183	24.8	932	10.6	
Male Head, No Spouse	2,153	1,727	80.2	426	19.8	308	14.3	118	5.5	
Other Households with Child <sup>e</sup>	770	632	82.1	138	17.9	89	11.6	49	6.3	
With No Children < 18	65,273	59,786	91.6	5,487	8.4	3,303	5.1	2,183	3.3	
More Than One Adult	38,563	36,107	93.6	2,456	6.4	1,560	4.0	896	2.3	
Women Living Alone	15,502	13,848	89.3	1,654	10.7	988	6.4	666	4.3	
Men Living Alone	11,207	9,830	87.7	1,377	12.3	756	6.7	621	5.5	
Households With Elderly	24,309	22,741	93.5	1,568	6.5	1,105	4.5	463	1.9	
Elderly Living Alone	10,006	9,374	93.7	632	6.3	421	4.2	211	2.1	
<b>Race and Hispanic Ethnicity</b>										
White, Non-Hispanic	78,238	71,775	91.7	6,462	8.3	4,414	5.6	2,049	2.6	
Black, Non-Hispanic	12,471	9,443	75.7	3,028	24.3	1,971	15.8	1,058	8.5	
Hispanic <sup>f</sup>	8,678	6,509	75.0	2,169	25.0	1,583	18.2	586	6.8	
Other Non-Hispanic	3,922	3,394	86.5	528	13.5	385	9.8	143	3.6	
<b>Household Income-to-Poverty Ratio</b>										
Under 1.00	12,270	7,596	61.9	4,673	38.1	2,999	24.4	1,674	13.6	
Under 1.30	17,804	11,697	65.7	6,107	34.3	3,988	22.4	2,119	11.9	
Under 1.85	28,833	20,758	72.0	8,075	28.0	5,406	18.7	2,669	9.3	
1.85 and Over	62,223	59,024	94.9	3,199	5.1	2,352	3.8	847	1.4	
Income Unknown	12,253	11,339	92.5	914	7.5	595	4.9	319	2.6	
<b>Area of Residence<sup>g</sup></b>										
Inside Metropolitan Area	83,064	73,278	88.2	9,785	11.8	6,647	8.0	3,138	3.8	
In Central City	26,559	22,205	83.6	4,354	16.4	2,825	10.6	1,530	5.8	
Not In Central City	42,217	38,311	90.7	3,905	9.3	2,770	6.6	1,135	2.7	
Outside Metropolitan Area	20,245	17,843	88.1	2,402	11.9	1,705	8.4	697	3.4	
<b>Census Geographic Region</b>										
Northeast	19,576	17,501	89.4	2,075	10.6	1,419	7.2	657	3.4	
Midwest	24,227	21,980	90.7	2,247	9.3	1,572	6.5	675	2.8	
South	37,322	32,561	87.2	4,760	12.8	3,233	8.7	1,528	4.1	
West	22,184	19,079	86.0	3,105	14.0	2,129	9.6	976	4.4	

Source: Tabulations of Current Population Survey, Food Security Supplement data  
e,f,g,j--See End Notes

**TABLE A.2**  
**Number of Adults by Food Security Status of Household, by Selected Household Characteristics, 1998.<sup>a,j</sup>**

CHARACTERISTIC	TOTAL			FOOD INSECURE					
	FOOD SECURE			All		Without Hunger		With Hunger	
	1,000	1,000	%	1,000	%	1,000	%	1,000	%
<b>Adults in All Households</b>	197,084	174,964	88.8	22,120	11.2	15,632	7.9	6,488	3.3
<b>Household Composition</b>									
With Children < 6	35,957	29,527	82.1	6,430	17.9	5,106	14.2	1,324	3.7
With Children < 18	80,684	67,549	83.7	13,135	16.3	10,121	12.5	3,015	3.7
Married Couple Families	61,386	53,954	87.9	7,432	12.1	6,051	9.9	1,382	2.3
Female Head, No Spouse	13,711	9,098	66.4	4,613	33.6	3,288	24.0	1,325	9.7
Male Head, No Spouse	3,931	3,112	79.2	819	20.8	615	15.6	204	5.2
Other Households with Child <sup>c</sup>	1,656	1,385	83.6	271	16.4	167	10.1	104	6.3
With No Children < 18	116,400	107,415	92.3	8,985	7.7	5,512	4.7	3,473	3.0
More Than One Adult	89,690	83,736	93.4	5,954	6.6	3,768	4.2	2,186	2.4
Women Living Alone	15,502	13,848	89.3	1,654	10.7	988	6.4	666	4.3
Men Living Alone	11,207	9,830	87.7	1,377	12.3	756	6.7	621	5.5
Households With Elderly	43,924	40,767	92.8	3,158	7.2	2,209	5.0	949	2.2
Elderly Living Alone	10,006	9,374	93.7	632	6.3	421	4.2	211	2.1
<b>Race and Hispanic Ethnicity</b>									
White, Non-Hispanic	147,070	136,021	92.5	11,049	7.5	7,684	5.2	3,365	2.3
Black, Non-Hispanic	22,391	17,125	76.5	5,267	23.5	3,535	15.8	1,731	7.7
Hispanic <sup>f</sup>	19,221	14,468	75.3	4,753	24.7	3,613	18.8	1,141	5.9
Other Non-Hispanic	8,401	7,350	87.5	1,051	12.5	800	9.5	251	3.0
<b>Household Income-to-Poverty Ratio</b>									
Under 1.00	21,340	13,173	61.7	8,166	38.3	5,411	25.4	2,755	12.9
Under 1.30	31,050	20,305	65.4	10,744	34.6	7,267	23.4	3,477	11.2
Under 1.85	51,520	37,062	71.9	14,458	28.1	9,976	19.4	4,483	8.7
1.85 and Over	122,215	116,298	95.2	5,917	4.8	4,419	3.6	1,498	1.2
Income Unknown	23,348	21,604	92.5	1,745	7.5	1,238	5.3	507	2.2
<b>Area of Residence<sup>g</sup></b>									
Inside Metropolitan Area	159,108	141,256	88.8	17,851	11.2	12,521	7.9	5,330	3.4
In Central City	48,569	40,801	84.0	7,768	16.0	5,261	10.8	2,507	5.2
Not In Central City	83,527	76,146	91.2	7,381	8.8	5,330	6.4	2,051	2.5
Outside Metropolitan Area	37,976	33,708	88.8	4,269	11.2	3,111	8.2	1,157	3.0
<b>Census Geographic Region</b>									
Northeast	38,145	34,573	90.6	3,573	9.4	2,541	6.7	1,031	2.7
Midwest	45,912	41,985	91.4	3,927	8.6	2,809	6.1	1,118	2.4
South	69,772	61,065	87.5	8,707	12.5	6,053	8.7	2,655	3.8
West	43,254	37,341	86.3	5,913	13.7	4,230	9.8	1,683	3.9

Source: Tabulations of Current Population Survey, Food Security Supplement data e,f,g,j--See End Notes

**TABLE A.3**  
**Household Food Security Status by Selected Household Characteristics, 1999.<sup>1</sup>**

CHARACTERISTIC	TOTAL	FOOD SECURE		FOOD INSECURE					
		1,000	%	All		Without Hunger		With Hunger	
				1,000	%	1,000	%	1,000	%
<b>All Households</b>	104,684	94,154	89.9	10,529	10.1	7,420	7.1	3,109	3.0
<b>Household Composition</b>									
With Children < 6	17,231	14,439	83.8	2,792	16.2	2,265	13.1	527	3.1
With Children < 18	37,884	32,290	85.2	5,594	14.8	4,340	11.5	1,254	3.3
Married Couple Families	26,303	23,771	90.4	2,532	9.6	2,105	8.0	428	1.6
Female Head, No Spouse	8,744	6,146	70.3	2,598	29.7	1,890	21.6	709	8.1
Male Head, No Spouse	2,187	1,817	83.1	370	16.9	280	12.8	89	4.1
Other Households with Child <sup>c</sup>	650	556	85.6	94	14.4	66	10.1	28	4.3
With No Children < 18	66,800	61,865	92.6	4,935	7.4	3,080	4.6	1,855	2.8
More Than One Adult	39,567	37,380	94.5	2,188	5.5	1,470	3.7	718	1.8
Women Living Alone	16,046	14,473	90.2	1,573	9.8	908	5.7	665	4.1
Men Living Alone	11,187	10,013	89.5	1,174	10.5	701	6.3	473	4.2
Households With Elderly	24,704	23,265	94.2	1,439	5.8	1,055	4.3	385	1.6
Elderly Living Alone	10,049	9,413	93.7	636	6.3	423	4.2	214	2.1
<b>Race and Hispanic Ethnicity</b>									
White, Non-Hispanic	78,998	73,451	93.0	5,546	7.0	3,873	4.9	1,673	2.1
Black, Non-Hispanic	12,616	9,936	78.8	2,680	21.2	1,866	14.8	814	6.5
Hispanic <sup>f</sup>	9,192	7,285	79.2	1,907	20.8	1,406	15.3	502	5.5
Other Non-Hispanic	3,878	3,482	89.8	396	10.2	275	7.1	121	3.1
<b>Household Income-to-Poverty Ratio</b>									
Under 1.00	11,319	7,169	63.3	4,150	36.7	2,767	24.4	1,383	12.2
Under 1.30	17,432	11,799	67.7	5,633	32.3	3,767	21.6	1,866	10.7
Under 1.85	27,261	20,145	73.9	7,116	26.1	4,907	18.0	2,210	8.1
1.85 and Over	63,909	61,299	95.9	2,610	4.1	1,969	3.1	641	1.0
Income Unknown	13,513	12,710	94.1	803	5.9	545	4.0	258	1.9
<b>Area of Residence<sup>g</sup></b>									
Inside Metropolitan Area	84,304	75,844	90.0	8,461	10.0	5,903	7.0	2,558	3.0
In Central City	26,718	23,027	86.2	3,691	13.8	2,578	9.7	1,113	4.2
Not In Central City	43,103	39,793	92.3	3,310	7.7	2,290	5.3	1,020	2.4
Outside Metropolitan Area	20,379	18,311	89.8	2,069	10.2	1,517	7.4	552	2.7
<b>Census Geographic Region</b>									
Northeast	19,960	18,301	91.7	1,659	8.3	1,147	5.7	512	2.6
Midwest	24,592	22,554	91.7	2,038	8.3	1,514	6.2	524	2.1
South	37,598	33,431	88.9	4,166	11.1	2,945	7.8	1,221	3.2
West	22,533	19,868	88.2	2,665	11.8	1,813	8.0	852	3.8

Source: Tabulations of Current Population Survey, Food Security Supplement data e,f,g,j--See End Notes

**TABLE A.4**  
**Number of Adults by Food Security Status of Household, by Selected Household Characteristics, 1999. <sup>j</sup>**

CHARACTERISTIC	TOTAL		FOOD SECURE				FOOD INSECURE			
					All		Without Hunger		With Hunger	
	1,000		1,000	%	1,000	%	1,000	%	1,000	%
<b>Adults in All Households</b>	198,901		179,960	90.5	18,941	9.5	13,869	7.0	5,072	2.5
<b>Household Composition</b>										
With Children < 6	35,925		30,417	84.7	5,508	15.3	4,486	12.5	1,022	2.8
With Children < 18	80,242		69,273	86.3	10,969	13.7	8,660	10.8	2,310	2.9
Married Couple Families	61,162		55,057	90.0	6,105	10.0	5,053	8.3	1,051	1.7
Female Head, No Spouse	13,620		9,707	71.3	3,913	28.7	2,910	21.4	1,002	7.4
Male Head, No Spouse	4,040		3,304	81.8	737	18.2	559	13.8	178	4.4
Other Households with Child <sup>e</sup>	1,420		1,205	84.9	215	15.1	137	9.6	78	5.5
With No Children < 18	118,658		110,687	93.3	7,972	6.7	5,209	4.4	2,762	2.3
More Than One Adult	91,426		86,202	94.3	5,224	5.7	3,600	3.9	1,624	1.8
Women Living Alone	16,046		14,473	90.2	1,573	9.8	908	5.7	665	4.1
Men Living Alone	11,187		10,013	89.5	1,174	10.5	701	6.3	473	4.2
Households With Elderly	44,082		41,354	93.8	2,728	6.2	2,117	4.8	611	1.4
Elderly Living Alone	10,049		9,413	93.7	636	6.3	423	4.2	214	2.1
<b>Race and Hispanic Ethnicity</b>										
White, Non-Hispanic	147,789		138,306	93.6	9,483	6.4	6,887	4.7	2,597	1.8
Black, Non-Hispanic	22,935		18,325	79.9	4,610	20.1	3,354	14.6	1,257	5.5
Hispanic <sup>f</sup>	20,024		15,885	79.3	4,139	20.7	3,117	15.6	1,021	5.1
Other Non-Hispanic	8,152		7,444	91.3	708	8.7	512	6.3	197	2.4
<b>Household Income-to-Poverty Ratio</b>										
Under 1.00	19,233		12,238	63.6	6,995	36.4	4,849	25.2	2,146	11.2
Under 1.30	29,684		20,073	67.6	9,611	32.4	6,686	22.5	2,925	9.9
Under 1.85	48,335		35,729	73.9	12,606	26.1	9,036	18.7	3,570	7.4
1.85 and Over	124,708		119,882	96.1	4,827	3.9	3,737	3.0	1,089	0.9
Income Unknown	25,857		24,350	94.2	1,508	5.8	1,095	4.2	412	1.6
<b>Area of Residence<sup>g</sup></b>										
Inside Metropolitan Area	160,816		145,526	90.5	15,290	9.5	11,063	6.9	4,227	2.6
In Central City	48,632		42,045	86.5	6,586	13.5	4,757	9.8	1,829	3.8
Not In Central City	84,934		78,862	92.9	6,072	7.1	4,340	5.1	1,731	2.0
Outside Metropolitan Area	38,085		34,433	90.4	3,651	9.6	2,807	7.4	845	2.2
<b>Census Geographic Region</b>										
Northeast	38,463		35,602	92.6	2,861	7.4	2,064	5.4	797	2.1
Midwest	45,779		42,353	92.5	3,426	7.5	2,618	5.7	808	1.8
South	70,955		63,485	89.5	7,470	10.5	5,509	7.8	1,961	2.8
West	43,704		38,520	88.1	5,184	11.9	3,678	8.4	1,505	3.4

Source: Tabulations of Current Population Survey, Food Security Supplement data e,f,g,j--See End Notes

**TABLE A.5**  
**Food Security Scale Item Responses, 1998 and 1999.<sup>j</sup>**

Scale Item <sup>i</sup>	Percent of All Households Affirming Item	
	1998	1999
<b>Household Items:</b>		
Worried food would run out before (I/we) got money to buy more	16.6	14.7
Food bought didn't last and (I/we) didn't have money to get more	13.3	12.2
Couldn't afford to eat balanced meals	10.9	9.5
<b>Adult Items:</b>		
Adult(s) cut size of meals or skipped meals	6.6	5.2
Respondent ate less than felt he/she should	6.2	4.8
Adult(s) cut size or skipped meals in 3 or more months	4.5	3.6
Respondent hungry but didn't eat because couldn't afford	2.8	2.2
Respondent lost weight	1.7	1.2
Adult(s) did not eat for whole day	1.3	1.0
Adult(s) did not eat for whole day in 3 or more months	0.9	0.7
<b>Child Items:<sup>h</sup></b> (See Table A.6)		

Source: Tabulations of Current Population Survey, Food Security Supplement data  
 i,h,j--See End Notes

**TABLE A.6****Food Security Scale Item Responses Among Households with Children, 1998 and 1999<sup>j</sup>**

Scale Item <sup>i</sup>	Percent of All Households With Children Affirming Item	
	1998	1999
<b>Household Items:</b>		
Worried food would run out before (I/we) got money to buy more	23.6	18.3
Food bought didn't last and (I/we) didn't have money to get more	18.7	14.4
Couldn't afford to eat balanced meals	13.9	10.2
<b>Adult Items:</b>		
Adult(s) cut size of meals or skipped meals	8.4	5.7
Respondent ate less than felt he/she should	8.2	5.3
Adult(s) cut size or skipped meals in 3 or more months	5.4	3.6
Respondent hungry but didn't eat because couldn't afford	3.2	2.5
Respondent lost weight	1.7	1.4
Adult(s) did not eat for whole day	1.4	1.0
Adult(s) did not eat for whole day in 3 or more months	1.0	0.6
<b>Child Items:<sup>h</sup></b>		
Relied on few kinds of low-cost food to feed child(ren)	16.4	10.9
Couldn't feed child(ren) balanced meals	9.6	6.4
Child(ren) were not eating enough	5.0	3.5
Cut size of child(ren)'s meals	1.6	0.7
Child(ren) were hungry	1.2	0.6
Child(ren) skipped meals	0.8	0.5
Child(ren) skipped meals in 3 or more months	0.5	0.4
Child(ren) did not eat for whole day	0.2	0.1

Source: Tabulations of Current Population Survey, Food Security Supplement data  
<sup>i,h,j</sup>--See End Notes



**TABLE A.7****Food Security Scale Item Responses, 1998 and 1999.<sup>d</sup>****(Based on data adjusted to be comparable to 1995-1997.)**

Scale Item <sup>i</sup>	Percent of All Households Affirming Item	
	1998	1999
<b>Household Items:</b>		
Worried food would run out before (I/we) got money to buy more	12.8	11.3
Food bought didn't last and (I/we) didn't have money to get more	10.8	9.9
Couldn't afford to eat balanced meals	9.0	8.1
<b>Adult Items:</b>		
Adult(s) cut size of meals or skipped meals	5.9	4.7
Respondent ate less than felt he/she should	5.7	4.5
Adult(s) cut size or skipped meals in 3 or more months	4.2	3.4
Respondent hungry but didn't eat because couldn't afford	2.6	2.1
Respondent lost weight	1.6	1.2
Adult(s) did not eat for whole day	1.3	1.0
Adult(s) did not eat for whole day in 3 or more months	0.9	0.6
<b>Child Items:<sup>h</sup></b>		
(See Table A.8)		

Source: Tabulations of Current Population Survey, Food Security Supplement data  
d,h,i--See End Notes

**TABLE A.8****Food Security Scale Item Responses Among Households with Children, 1998 and 1999.<sup>d</sup>  
(Based on data adjusted to be comparable to 1995-1997.)**

Scale Item <sup>i</sup>	Percent of All Households With Children Affirming Item	
	1998	1999
<b>Household Items:</b>		
Worried food would run out before (I/we) got money to buy more	18.9	16.7
Food bought didn't last and (I/we) didn't have money to get more	15.5	14.1
Couldn't afford to eat balanced meals	11.9	10.2
<b>Adult Items:</b>		
Adult(s) cut size of meals or skipped meals	7.7	5.8
Respondent ate less than felt he/she should	7.6	5.4
Adult(s) cut size or skipped meals in 3 or more months	5.1	3.7
Respondent hungry but didn't eat because couldn't afford	3.0	2.4
Respondent lost weight	1.6	1.2
Adult(s) did not eat for whole day	1.4	1.1
Adult(s) did not eat for whole day in 3 or more months	0.9	0.7
<b>Child Items:<sup>h</sup></b>		
Relied on few kinds of low-cost food to feed child(ren)	13.6	12.1
Couldn't feed child(ren) balanced meals	8.5	7.3
Child(ren) were not eating enough	4.4	4.1
Cut size of child(ren)'s meals	1.5	0.9
Child(ren) were hungry	1.2	0.8
Child(ren) skipped meals	0.8	0.5
Child(ren) skipped meals in 3 or more months	0.5	0.4
Child(ren) did not eat for whole day	0.2	0.1

Source: Tabulations of Current Population Survey, Food Security Supplement data  
d,h,i--See End Notes

**B: Prevalence of Food Insecurity and Hunger  
Among Households with Children**

**TABLE B.1****Food Insecurity and Hunger Among Households with Children, by Selected Household Characteristics, 1998.<sup>j</sup>**

Characteristic	Total	Food Insecure, All		Food Insecure Without Hunger		Food Insecure With Hunger Among Adults But Not Children		Food Insecure With Hunger Among Adults and Children	
		1,000	%	1,000	%	1,000	%	1,000	%
<b>Households with Children&lt;18</b>	38,036	6,701	17.6	5,049	13.3	1,321	3.5	331	0.9
<b>Household Composition</b>									
With Children < 6	17,087	3,205	18.8	2,529	14.8	592	3.5	84	0.5
Married Couple Families	26,306	3,022	11.5	2,468	9.4	449	1.7	105	0.4
Female Head, No Spouse	8,807	3,115	35.4	2,183	24.8	739	8.4	193	2.2
Male Head, No Spouse	2,153	426	19.8	308	14.3	98	4.5	20	0.9
Other Households with Child <sup>e</sup>	770	138	17.9	89	11.6	35	4.5	14	1.8
<b>Race and Hispanic Ethnicity</b>									
White, Non-Hispanic	25,750	3,176	12.3	2,393	9.3	638	2.5	145	0.6
Black, Non-Hispanic	5,645	1,744	30.9	1,268	22.5	378	6.7	98	1.7
Hispanic <sup>f</sup>	4,844	1,490	30.8	1,153	23.8	262	5.4	76	1.6
Other Non-Hispanic	1,797	291	16.2	235	13.1	43	2.4	13	0.7
<b>Household Income-to-Poverty Ratio</b>									
Under 1.00	6,012	2,814	46.8	1,975	32.8	662	11.0	178	3.0
Under 1.30	8,162	3,606	44.2	2,581	31.6	787	9.6	238	2.9
Under 1.85	12,777	4,738	37.1	3,466	27.1	990	7.8	282	2.2
1.85 and Over	21,943	1,538	7.0	1,285	5.9	216	1.0	37	0.2
Income Unknown	3,316	424	12.8	298	9.0	115	3.5	12	0.4
<b>Area of Residence<sup>g</sup></b>									
Inside Metropolitan Area	30,729	5,319	17.3	3,992	13.0	1,075	3.5	251	0.8
In Central City	9,160	2,246	24.5	1,636	17.9	499	5.4	112	1.2
Not In Central City	16,210	2,227	13.7	1,700	10.5	410	2.5	118	0.7
Outside Metropolitan Area	7,308	1,383	18.9	1,057	14.5	246	3.4	80	1.1
<b>Census Geographic Region</b>									
Northeast	6,750	1,022	15.1	779	11.5	197	2.9	46	0.7
Midwest	8,898	1,257	14.1	942	10.6	244	2.7	71	0.8
South	13,704	2,611	19.0	1,916	14.0	568	4.1	127	0.9
West	8,684	1,811	20.9	1,413	16.3	312	3.6	86	1.0

Source: Tabulations of Current Population Survey, Food Security Supplement data e,f,g,j--See End Notes

**TABLE B.2****Number of Children in Households with Food Insecurity and Hunger, by Selected Household Characteristics, 1998.<sup>bj</sup>**

Characteristic	Total	Food Insecure, All		Food Insecure Without Hunger		Food Insecure With Hunger Among Adults But Not Children		Food Insecure With Hunger Among Adults and Children	
		1,000	%	1,000	%	1,000	%	1,000	%
<b>Children &lt;18 in all Households</b>	71,282	14,027	19.7	10,658	15.0	2,653	3.7	716	1.0
<b>Household Composition</b>									
With Children < 6	35,711	7,634	21.4	6,034	16.9	1,379	3.9	221	0.6
Married Couple Families	50,688	6,817	13.4	5,647	11.1	920	1.8	250	0.5
Female Head, No Spouse	16,012	6,217	38.8	4,308	26.9	1,515	9.5	395	2.5
Male Head, No Spouse	3,452	756	21.9	540	15.6	164	4.7	52	1.5
Other Households with Child <sup>c</sup>	1,130	237	21.0	164	14.5	55	4.8	19	1.6
<b>Race and Hispanic Ethnicity</b>									
White, Non-Hispanic	46,515	5,991	12.9	4,580	9.8	1,155	2.5	256	0.5
Black, Non-Hispanic	10,753	3,634	33.8	2,586	24.0	817	7.6	231	2.1
Hispanic <sup>f</sup>	10,685	3,723	34.8	2,945	27.6	585	5.5	193	1.8
Other Non-Hispanic	3,329	679	20.4	547	16.4	96	2.9	36	1.1
<b>Household Income-to-Poverty Ratio</b>									
Under 1.00	13,801	6,726	48.7	4,764	34.5	1,546	11.2	416	3.0
Under 1.30	18,481	8,422	45.6	6,125	33.1	1,750	9.5	547	3.0
Under 1.85	27,381	10,611	38.8	7,854	28.7	2,135	7.8	621	2.3
1.85 and Over	38,950	2,752	7.1	2,337	6.0	334	0.9	80	0.2
Income Unknown	4,951	664	13.4	466	9.4	184	3.7	14	0.3
<b>Area of Residence<sup>g</sup></b>									
Inside Metropolitan Area	57,451	11,202	19.5	8,459	14.7	2,167	3.8	576	1.0
In Central City	17,552	4,881	27.8	3,628	20.7	1,004	5.7	249	1.4
Not In Central City	30,190	4,710	15.6	3,593	11.9	835	2.8	281	0.9
Outside Metropolitan Area	13,831	2,826	20.4	2,199	15.9	487	3.5	140	1.0
<b>Census Geographic Region</b>									
Northeast	12,704	2,042	16.1	1,516	11.9	430	3.4	97	0.8
Midwest	17,224	2,693	15.6	2,053	11.9	516	3.0	124	0.7
South	24,229	5,133	21.2	3,780	15.6	1,086	4.5	267	1.1
West	17,125	4,159	24.3	3,310	19.3	622	3.6	228	1.3

Source: Tabulations of Current Population Survey, Food Security Supplement data  
b,e,f,g,j--See End Notes

**TABLE B.3****Food Insecurity and Hunger Among Households with Children, by Selected Household Characteristics, 1999.<sup>j</sup>**

Characteristic	Total	Food Insecure, All		Food Insecure Without Hunger		Food Insecure With Hunger Among Adults But Not Children		Food Insecure With Hunger Among Adults and Children	
		1,000	1,000 %	1,000	%	1,000	%	1,000	%
<b>Households with Children&lt;18</b>	37,885	5,594	14.8	4,340	11.5	1,035	2.7	219	0.6
<b>Household Composition</b>									
With Children < 6	17,231	2,792	16.2	2,265	13.1	458	2.7	69	0.4
Married Couple Families	26,304	2,532	9.6	2,105	8.0	353	1.3	75	0.3
Female Head, No Spouse	8,744	2,598	29.7	1,890	21.6	585	6.7	123	1.4
Male Head, No Spouse	2,187	370	16.9	280	12.8	72	3.3	17	0.8
Other Households with Child <sup>e</sup>	650	94	14.4	66	10.1	25	3.8	3	0.5
<b>Race and Hispanic Ethnicity</b>									
White, Non-Hispanic	25,432	2,559	10.1	2,010	7.9	454	1.8	95	0.4
Black, Non-Hispanic	5,413	1,416	26.2	1,090	20.1	272	5.0	54	1.0
Hispanic <sup>f</sup>	5,373	1,390	25.9	1,063	19.8	272	5.1	54	1.0
Other Non-Hispanic	1,667	230	13.8	177	10.6	37	2.2	15	0.9
<b>Household Income-to-Poverty Ratio</b>									
Under 1.00	5,701	2,448	42.9	1,815	31.8	522	9.2	111	1.9
Under 1.30	7,583	3,058	40.3	2,278	30.0	652	8.6	129	1.7
Under 1.85	11,702	3,963	33.9	2,992	25.6	794	6.8	177	1.5
1.85 and Over	22,505	1,261	5.6	1,064	4.7	158	0.7	38	0.2
Income Unknown	3,678	370	10.1	283	7.7	83	2.3	4	0.1
<b>Area of Residence<sup>g</sup></b>									
Inside Metropolitan Area	30,791	4,524	14.7	3,474	11.3	857	2.8	193	0.6
In Central City	9,004	1,890	21.0	1,476	16.4	350	3.9	64	0.7
Not In Central City	16,617	1,919	11.5	1,436	8.6	379	2.3	104	0.6
Outside Metropolitan Area	7,094	1,070	15.1	866	12.2	178	2.5	26	0.4
<b>Census Geographic Region</b>									
Northeast	6,884	830	12.1	642	9.3	163	2.4	25	0.4
Midwest	8,681	1,090	12.6	903	10.4	151	1.7	36	0.4
South	13,621	2,139	15.7	1,705	12.5	352	2.6	82	0.6
West	8,699	1,536	17.7	1,090	12.5	369	4.2	76	0.9

Source: Tabulations of Current Population Survey, Food Security Supplement data  
e,f,g,j--See End Notes

**TABLE B.4****Number of Children in Households with Food Insecurity and Hunger, by Selected Household Characteristics, 1999.**<sup>bj</sup>

Characteristic	Total	Food Insecure, All		Food Insecure Without Hunger		Food Insecure With Hunger Among Adults But Not Children		Food Insecure With Hunger Among Adults and Children	
		1,000	1,000	%	1,000	%	1,000	%	1,000
<b>Children &lt;18 in all Households</b>	71,417	12,074	16.9	9,368	13.1	2,196	3.1	511	0.7
<b>Household Composition</b>									
With Children < 6	36,135	6,725	18.6	5,368	14.9	1,127	3.1	230	0.6
Married Couple Families	50,818	5,861	11.5	4,847	9.5	811	1.6	203	0.4
Female Head, No Spouse	16,133	5,390	33.4	3,921	24.3	1,208	7.5	261	1.6
Male Head, No Spouse	3,526	664	18.8	498	14.1	137	3.9	29	0.8
Other Households with Child <sup>c</sup>	939	160	17.1	102	10.8	40	4.3	18	2.0
<b>Race and Hispanic Ethnicity</b>									
White, Non-Hispanic	45,933	5,055	11.0	3,989	8.7	875	1.9	191	0.4
Black, Non-Hispanic	10,733	3,066	28.6	2,399	22.4	556	5.2	111	1.0
Hispanic <sup>f</sup>	11,485	3,351	29.2	2,533	22.1	671	5.8	147	1.3
Other Non-Hispanic	3,266	602	18.4	446	13.7	93	2.8	63	1.9
<b>Household Income-to-Poverty Ratio</b>									
Under 1.00	13,301	5,850	44.0	4,281	32.2	1,272	9.6	297	2.2
Under 1.30	17,475	7,265	41.6	5,378	30.8	1,546	8.8	342	2.0
Under 1.85	25,840	9,102	35.2	6,846	26.5	1,827	7.1	429	1.7
1.85 and Over	40,471	2,340	5.8	2,034	5.0	233	0.6	73	0.2
Income Unknown	5,106	633	12.4	488	9.6	135	2.7	9	0.2
<b>Area of Residence<sup>g</sup></b>									
Inside Metropolitan Area	57,734	9,715	16.8	7,479	13.0	1,802	3.1	434	0.8
In Central City	17,231	4,137	24.0	3,203	18.6	786	4.6	148	0.9
Not In Central City	31,002	4,088	13.2	3,114	10.0	736	2.4	238	0.8
Outside Metropolitan Area	13,683	2,360	17.2	1,889	13.8	394	2.9	77	0.6
<b>Census Geographic Region</b>									
Northeast	12,896	1,795	13.9	1,380	10.7	371	2.9	44	0.3
Midwest	16,633	2,357	14.2	1,940	11.7	321	1.9	96	0.6
South	24,873	4,462	17.9	3,589	14.4	700	2.8	172	0.7
West	17,015	3,460	20.3	2,458	14.4	803	4.7	199	1.2

Source: Tabulations of Current Population Survey, Food Security Supplement data  
b,e,f,g,j--See End Notes

**TABLE B.5**  
**Households with Hunger Among Children, by Selected Household**  
**Characteristics, 1995.<sup>j</sup>**

Characteristic	Total	Food Insecure With Hunger Among Adults and Children	
		1,000	%
<b>Households with Children&lt;18</b>	38,133	415	1.1
<b>Household Composition</b>			
With Children < 6	18,313	174	0.9
Married Couple Families	26,787	144	0.5
Female Head, No Spouse	8,798	233	2.6
Male Head, No Spouse	1,884	25	1.3
Other Households with Child <sup>e</sup>	663	13	1.9
<b>Race and Hispanic Ethnicity</b>			
White, Non-Hispanic	26,637	175	0.7
Black, Non-Hispanic	5,762	127	2.2
Hispanic <sup>f</sup>	4,475	100	2.2
Other Non-Hispanic	1,259	13	1.0
<b>Household Income-to-Poverty Ratio</b>			
Under 1.00	7,821	246	3.1
Under 1.30	10,025	308	3.1
Under 1.85	14,587	347	2.4
1.85 and Over	20,852	47	0.2
Income Unknown	2,694	21	0.8
<b>Area of Residence<sup>g</sup></b>			
Inside Metropolitan Area	29,211	365	1.2
In Central City	8,836	138	1.6
Not In Central City	14,679	158	1.1
Outside Metropolitan Area	8,743	49	0.6
<b>Census Geographic Region</b>			
Northeast	7,075	51	0.7
Midwest	8,866	74	0.8
South	13,860	160	1.2
West	8,332	131	1.6

Source: Tabulations of Current Population Survey, Food Security Supplement data  
e,f,g,j--See End Notes



**TABLE B.6**  
**Households with Hunger Among Children, by Selected Household**  
**Characteristics, 1996.<sup>j</sup>**

Characteristic	Total	Food Insecure With Hunger Among Adults and Children	
		1,000	%
<b>Households with Children&lt;18</b>	38,196	379	1.0
<b>Household Composition</b>			
With Children < 6	17,871	148	0.8
Married Couple Families	26,738	113	0.4
Female Head, No Spouse	8,721	230	2.6
Male Head, No Spouse	2,005	25	1.2
Other Households with Child <sup>e</sup>	732	12	1.6
<b>Race and Hispanic Ethnicity</b>			
White, Non-Hispanic	26,087	121	0.5
Black, Non-Hispanic	5,774	138	2.4
Hispanic <sup>f</sup>	4,644	108	2.3
Other Non-Hispanic	1,690	13	0.7
<b>Household Income-to-Poverty Ratio</b>			
Under 1.00	3,718	122	3.3
Under 1.30	9,434	302	3.2
Under 1.85	14,321	320	2.2
1.85 and Over	20,642	35	0.2
Income Unknown	3,233	24	0.7
<b>Area of Residence<sup>g</sup></b>			
Inside Metropolitan Area	30,431	330	1.1
In Central City	9,305	180	1.9
Not In Central City	15,826	108	0.7
Outside Metropolitan Area	7,765	50	0.6
<b>Census Geographic Region</b>			
Northeast	6,960	59	0.9
Midwest	9,029	68	0.7
South	13,713	137	1.0
West	8,495	116	1.4

Source: Tabulations of Current Population Survey, Food Security Supplement data  
e,f,g,j--See End Notes

**TABLE B.7**  
**Households with Hunger Among Children, by Selected Household**  
**Characteristics, 1997.<sup>j</sup>**

Characteristic	Total	Food Insecure With Hunger Among Adults and Children	
		1,000	%
<b>Households with Children&lt;18</b>	38,200	305	0.8
<b>Household Composition</b>			
With Children < 6	17,538	99	0.6
Married Couple Families	26,323	84	0.3
Female Head, No Spouse	8,978	205	2.3
Male Head, No Spouse	2,201	8	0.4
Other Households with Child <sup>e</sup>	698	8	1.2
<b>Race and Hispanic Ethnicity</b>			
White, Non-Hispanic	26,060	118	0.5
Black, Non-Hispanic	5,756	103	1.8
Hispanic <sup>f</sup>	4,796	73	1.5
Other Non-Hispanic	1,588	11	0.7
<b>Household Income-to-Poverty Ratio</b>			
Under 1.00	3,739	74	2.0
Under 1.30	9,250	197	2.1
Under 1.85	13,980	247	1.8
1.85 and Over	21,025	40	0.2
Income Unknown	3,195	18	0.6
<b>Area of Residence<sup>g</sup></b>			
Inside Metropolitan Area	30,556	273	0.9
In Central City	9,292	128	1.4
Not In Central City	15,980	98	0.6
Outside Metropolitan Area	7,644	33	0.4
<b>Census Geographic Region</b>			
Northeast	7,251	50	0.7
Midwest	8,877	60	0.7
South	13,670	114	0.8
West	8,403	81	1.0

Source: Tabulations of Current Population Survey, Food Security Supplement data  
e,f,g,j--See End Notes

**TABLE B.8****Number of Children in Households with Hunger Among Children, by Selected Household Characteristics, 1995.<sup>bj</sup>**

Characteristic	TOTAL	Food Insecure With Hunger Among Adults and Children	
		1,000	%
<b>Children &lt;18 in all Households</b>	70,193	887	1.3
<b>Household Composition</b>			
Married Couple Families	50,635	389	0.8
Female Head, No Spouse	15,745	445	2.8
Male Head, No Spouse	2,874	32	1.1
Other Households with Child <sup>e</sup>	940	21	2.2
<b>Race and Hispanic Ethnicity</b>			
White, Non-Hispanic	47,609	357	0.8
Black, Non-Hispanic	10,856	253	2.3
Hispanic <sup>f</sup>	9,645	254	2.6
Other Non-Hispanic	2,084	23	1.1
<b>Household Income-to-Poverty Ratio</b>			
Under 1.00	16,974	571	3.4
Under 1.30	21,488	693	3.2
Under 1.85	30,931	771	2.5
1.85 and Over	35,642	86	0.2
Income Unknown	3,620	31	0.9
<b>Area of Residence<sup>g</sup></b>			
Inside Metropolitan Area	53,126	781	1.5
In Central City	16,273	286	1.8
Not In Central City	26,605	369	1.4
Outside Metropolitan Area	16,688	103	0.6
<b>Census Geographic Region</b>			
Northeast	12,616	100	0.8
Midwest	17,152	142	0.8
South	24,946	324	1.3
West	15,479	322	2.1

Source: Tabulations of Current Population Survey, Food Security Supplement data

b,e,f,g,j--See End Notes

**TABLE B.9****Number of Children in Households with Hunger Among Children, by Selected Household Characteristics, 1996.<sup>bj</sup>**

Characteristic	TOTAL	Food Insecure With Hunger Among Adults and Children	
		1,000	%
<b>Children &lt;18 in all Households</b>	71,172	917	1.3
<b>Household Composition</b>			
Married Couple Families	51,351	320	0.6
Female Head, No Spouse	15,561	539	3.5
Male Head, No Spouse	3,210	44	1.4
Other Households with Child <sup>c</sup>	1,049	14	1.3
<b>Race and Hispanic Ethnicity</b>			
White, Non-Hispanic	46,583	251	0.5
Black, Non-Hispanic	10,983	338	3.1
Hispanic <sup>f</sup>	10,176	296	2.9
Other Non-Hispanic	3,430	32	0.9
<b>Household Income-to-Poverty Ratio</b>			
Under 1.00	8,323	291	3.5
Under 1.30	21,143	771	3.6
Under 1.85	30,578	821	2.7
1.85 and Over	36,251	61	0.2
Income Unknown	4,343	36	0.8
<b>Area of Residence<sup>g</sup></b>			
Inside Metropolitan Area	56,574	791	1.4
In Central City	17,560	400	2.3
Not In Central City	29,347	290	1.0
Outside Metropolitan Area	14,598	126	0.9
<b>Census Geographic Region</b>			
Northeast	12,746	136	1.1
Midwest	17,292	153	0.9
South	24,615	323	1.3
West	16,519	305	1.8

Source: Tabulations of Current Population Survey, Food Security Supplement data

b,e,f,g,j--See End Notes

**TABLE B.10****Number of Children in Households with Hunger Among Children, by Selected Household Characteristics, 1997.<sup>bj</sup>**

Characteristic	TOTAL	Food Insecure With Hunger Among Adults and Children	
		1,000	%
<b>Children &lt;18 in all Households</b>	70,948	651	0.9
<b>Household Composition</b>			
Married Couple Families	50,321	224	0.4
Female Head, No Spouse	16,166	405	2.5
Male Head, No Spouse	3,484	16	0.4
Other Households with Child <sup>c</sup>	977	7	0.7
<b>Race and Hispanic Ethnicity</b>			
White, Non-Hispanic	46,640	247	0.5
Black, Non-Hispanic	10,643	213	2.0
Hispanic <sup>f</sup>	10,536	156	1.5
Other Non-Hispanic	3,130	34	1.1
<b>Household Income-to-Poverty Ratio</b>			
Under 1.00	8,349	173	2.1
Under 1.30	20,557	443	2.2
Under 1.85	30,035	552	1.8
1.85 and Over	36,701	79	0.2
Income Unknown	4,213	20	0.5
<b>Area of Residence<sup>g</sup></b>			
Inside Metropolitan Area	56,471	600	1.1
In Central City	17,408	275	1.6
Not In Central City	29,612	238	0.8
Outside Metropolitan Area	14,478	51	0.4
<b>Census Geographic Region</b>			
Northeast	13,245	120	0.9
Midwest	16,766	129	0.8
South	24,497	221	0.9
West	16,440	181	1.1

Source: Tabulations of Current Population Survey, Food Security Supplement data

b,e,f,g,j--See End Notes

**C: Estimates of Change in Household Prevalence of Food Insecurity and  
Hunger, 1995-1999**

**TABLE C.1**  
**Household Food Security Status, by Selected Household Characteristics, 1998.**  
**(Based on data adjusted to be comparable to 1995-1997.)<sup>d</sup>**

CHARACTERISTIC	TOTAL			FOOD SECURE		FOOD INSECURE			
	1,000	1,000	%	All		Without Hunger		With Hunger	
				1,000	%	1,000	%	1,000	%
<b>All Households</b>	103,492	93,040	89.9	10,452	10.1	6,821	6.6	3,631	3.5
<b>Household Composition</b>									
With Children < 6	17,137	14,350	83.7	2,787	16.3	2,133	12.4	654	3.8
With Children < 18	38,123	32,312	84.8	5,810	15.2	4,235	11.1	1,576	4.1
Married Couple Families	26,355	23,819	90.4	2,536	9.6	2,014	7.6	522	2.0
Female Head, No Spouse	8,837	6,018	68.1	2,819	31.9	1,918	21.7	900	10.2
Male Head, No Spouse	2,160	1,823	84.4	338	15.6	230	10.6	108	5.0
Other Households with Child <sup>e</sup>	770	652	84.7	118	15.3	72	9.4	46	6.0
With No Children < 18	65,369	60,727	92.9	4,642	7.1	2,587	4.0	2,055	3.1
More Than One Adult	38,603	36,555	94.7	2,048	5.3	1,217	3.2	830	2.2
Women Living Alone	15,539	14,097	90.7	1,441	9.3	809	5.2	633	4.1
Men Living Alone	11,227	10,074	89.7	1,153	10.3	561	5.0	592	5.3
Households With Elderly	24,359	23,026	94.5	1,333	5.5	905	3.7	428	1.8
Elderly Living Alone	10,042	9,506	94.7	536	5.3	343	3.4	194	1.9
<b>Race and Hispanic Ethnicity</b>									
White, Non-Hispanic	78,353	72,794	92.9	5,558	7.1	3,634	4.6	1,924	2.5
Black, Non-Hispanic	12,505	9,930	79.4	2,574	20.6	1,569	12.5	1,006	8.0
Hispanic <sup>f</sup>	8,707	6,827	78.4	1,879	21.6	1,311	15.1	568	6.5
Other Non-Hispanic	3,928	3,488	88.8	440	11.2	307	7.8	133	3.4
<b>Household Income-to-Poverty Ratio</b>									
Under 1.00	12,311	7,963	64.7	4,349	35.3	2,705	22.0	1,644	13.4
Under 1.30	17,873	12,163	68.1	5,710	31.9	3,629	20.3	2,081	11.6
Under 1.85	28,943	21,432	74.0	7,511	26.0	4,894	16.9	2,617	9.0
1.85 and Over	62,267	60,011	96.4	2,256	3.6	1,534	2.5	722	1.2
Income Unknown	12,282	11,596	94.4	685	5.6	394	3.2	292	2.4
<b>Area of Residence<sup>g</sup></b>									
Inside Metropolitan Area	83,228	74,899	90.0	8,329	10.0	5,375	6.5	2,954	3.5
In Central City	26,615	22,882	86.0	3,733	14.0	2,272	8.5	1,461	5.5
Not In Central City	42,294	39,049	92.3	3,246	7.7	2,201	5.2	1,044	2.5
Outside Metropolitan Area	20,264	18,140	89.5	2,124	10.5	1,447	7.1	677	3.3
<b>Census Geographic Region</b>									
Northeast	19,626	17,849	90.9	1,778	9.1	1,159	5.9	618	3.2
Midwest	24,268	22,386	92.2	1,882	7.8	1,240	5.1	642	2.6
South	37,368	33,261	89.0	4,107	11.0	2,659	7.1	1,448	3.9
West	22,229	19,543	87.9	2,686	12.1	1,763	7.9	923	4.2

Source: Tabulations of Current Population Survey, Food Security Supplement data.  
d,e,f,g -- See End Notes

**TABLE C.2****Number of Adults by Food Security Status of Household, by Selected Household Characteristics, 1998.****(Based on data adjusted to be comparable to 1995-1997.)<sup>ad</sup>**

CHARACTERISTIC	TOTAL		FOOD SECURE		FOOD INSECURE					
	1,000	%	1,000	%	All		Without Hunger		With Hunger	
					1,000	%	1,000	%	1,000	%
<b>All Households</b>	197,423		178,631	90.5	18,792	9.5	12,657	6.4	6,135	3.1
<b>Household Composition</b>										
With Children < 6	36,051		30,458	84.5	5,592	15.5	4,307	11.9	1,285	3.6
With Children < 18	80,855		69,559	86.0	11,296	14.0	8,433	10.4	2,863	3.5
Married Couple Families	61,503		55,238	89.8	6,265	10.2	4,963	8.1	1,302	2.1
Female Head, No Spouse	13,748		9,581	69.7	4,167	30.3	2,891	21.0	1,276	9.3
Male Head, No Spouse	3,948		3,317	84.0	631	16.0	443	11.2	187	4.7
Other Households with Child <sup>e</sup>	1,656		1,422	85.9	234	14.1	136	8.2	98	5.9
With No Children < 18	116,568		109,072	93.6	7,496	6.4	4,224	3.6	3,272	2.8
More Than One Adult	89,802		84,900	94.5	4,902	5.5	2,855	3.2	2,047	2.3
Women Living Alone	15,539		14,097	90.7	1,441	9.3	809	5.2	633	4.1
Men Living Alone	11,227		10,074	89.7	1,153	10.3	561	5.0	592	5.3
Households With Elderly	44,002		41,308	93.9	2,694	6.1	1,815	4.1	879	2.0
Elderly Living Alone	10,042		9,506	94.7	536	5.3	343	3.4	194	1.9
<b>Race and Hispanic Ethnicity</b>										
White, Non-Hispanic	147,296		137,795	93.5	9,501	6.5	6,327	4.3	3,174	2.2
Black, Non-Hispanic	22,433		18,037	80.4	4,396	19.6	2,761	12.3	1,635	7.3
Hispanic <sup>f</sup>	19,284		15,254	79.1	4,030	20.9	2,924	15.2	1,107	5.7
Other Non-Hispanic	8,411		7,546	89.7	866	10.3	646	7.7	219	2.6
<b>Household Income-to-Poverty Ratio</b>										
Under 1.00	21,419		13,889	64.8	7,530	35.2	4,821	22.5	2,709	12.6
Under 1.30	31,196		21,213	68.0	9,982	32.0	6,564	21.0	3,418	11.0
Under 1.85	51,730		38,319	74.1	13,410	25.9	9,005	17.4	4,405	8.5
1.85 and Over	122,305		118,163	96.6	4,142	3.4	2,859	2.3	1,284	1.0
Income Unknown	23,388		22,148	94.7	1,240	5.3	793	3.4	447	1.9
<b>Area of Residence<sup>g</sup></b>										
Inside Metropolitan Area	159,416		144,354	90.6	15,062	9.4	10,048	6.3	5,014	3.1
In Central City	48,676		42,124	86.5	6,552	13.5	4,147	8.5	2,405	4.9
Not In Central City	83,659		77,532	92.7	6,126	7.3	4,251	5.1	1,875	2.2
Outside Metropolitan Area	38,007		34,277	90.2	3,730	9.8	2,609	6.9	1,121	3.0
<b>Census Geographic Region</b>										
Northeast	38,245		35,207	92.1	3,038	7.9	2,075	5.4	964	2.5
Midwest	45,978		42,715	92.9	3,263	7.1	2,192	4.8	1,071	2.3
South	69,846		62,413	89.4	7,433	10.6	4,908	7.0	2,525	3.6
West	43,354		38,296	88.3	5,058	11.7	3,482	8.0	1,576	3.6

Source: Tabulations of Current Population Survey, Food Security Supplement data.  
d,e,f,g -- See End Notes



**TABLE C.3**  
**Household Food Security Status, by Selected Household Characteristics, 1999.**  
**(Based on data adjusted to be comparable to 1995-1997.)<sup>d</sup>**

CHARACTERISTIC	TOTAL		FOOD SECURE		FOOD INSECURE					
	1,000	%	1,000	%	All		Without Hunger		With Hunger	
					1,000	%	1,000	%	1,000	%
<b>All Households</b>	104,816		95,664	91.3	9,152	8.7	6,166	5.9	2,987	2.8
<b>Household Composition</b>										
With Children < 6	17,260		14,782	85.6	2,479	14.4	1,967	11.4	511	3.0
With Children < 18	37,927		33,030	87.1	4,897	12.9	3,682	9.7	1,215	3.2
Married Couple Families	26,318		24,205	92.0	2,113	8.0	1,691	6.4	421	1.6
Female Head, No Spouse	8,769		6,404	73.0	2,365	27.0	1,686	19.2	679	7.7
Male Head, No Spouse	2,187		1,857	84.9	330	15.1	244	11.1	87	4.0
Other Households with Child <sup>e</sup>	653		564	86.3	89	13.7	61	9.4	28	4.3
With No Children < 18	66,889		62,634	93.6	4,255	6.4	2,484	3.7	1,772	2.6
More Than One Adult	39,603		37,758	95.3	1,845	4.7	1,158	2.9	686	1.7
Women Living Alone	16,068		14,715	91.6	1,353	8.4	706	4.4	646	4.0
Men Living Alone	11,218		10,160	90.6	1,058	9.4	619	5.5	439	3.9
Households With Elderly	24,748		23,567	95.2	1,181	4.8	811	3.3	370	1.5
Elderly Living Alone	10,077		9,547	94.7	529	5.3	322	3.2	207	2.1
<b>Race and Hispanic Ethnicity</b>										
White, Non-Hispanic	79,076		74,276	93.9	4,800	6.1	3,189	4.0	1,611	2.0
Black, Non-Hispanic	12,643		10,251	81.1	2,393	18.9	1,618	12.8	774	6.1
Hispanic <sup>f</sup>	9,218		7,580	82.2	1,638	17.8	1,156	12.5	482	5.2
Other Non-Hispanic	3,878		3,556	91.7	322	8.3	203	5.2	119	3.1
<b>Household Income-to-Poverty Ratio</b>										
Under 1.00	11,344		7,474	65.9	3,870	34.1	2,505	22.1	1,365	12.0
Under 1.30	17,475		12,216	69.9	5,258	30.1	3,419	19.6	1,840	10.5
Under 1.85	27,335		20,726	75.8	6,609	24.2	4,431	16.2	2,178	8.0
1.85 and Over	63,925		62,002	97.0	1,923	3.0	1,350	2.1	573	0.9
Income Unknown	13,556		12,936	95.4	620	4.6	384	2.8	236	1.7
<b>Area of Residence<sup>g</sup></b>										
Inside Metropolitan Area	84,415		77,081	91.3	7,334	8.7	4,881	5.8	2,452	2.9
In Central City	26,771		23,568	88.0	3,203	12.0	2,130	8.0	1,073	4.0
Not In Central City	43,145		40,249	93.3	2,896	6.7	1,917	4.4	979	2.3
Outside Metropolitan Area	20,401		18,583	91.1	1,818	8.9	1,284	6.3	534	2.6
<b>Census Geographic Region</b>										
Northeast	20,002		18,544	92.7	1,458	7.3	963	4.8	495	2.5
Midwest	24,610		22,877	93.0	1,733	7.0	1,230	5.0	502	2.0
South	37,640		33,989	90.3	3,651	9.7	2,480	6.6	1,171	3.1
West	22,564		20,253	89.8	2,311	10.2	1,492	6.6	819	3.6

Source: Tabulations of Current Population Survey, Food Security Supplement data.  
d,e,f,g -- See End Notes

**TABLE C.4**  
**Number of Adults by Food Security Status of Household, by Selected Household Characteristics, 1999.**  
**(Based on data adjusted to be comparable to 1995-1997).<sup>ad</sup>**

CHARACTERISTIC	TOTAL		FOOD SECURE		FOOD INSECURE					
	1,000	%	1,000	%	All	Without Hunger	With Hunger			
	1,000	%	1,000	%	1,000	%	1,000	%		
<b>All Households</b>	199,117		182,794	91.8	16,323	8.2	11,447	5.7	4,875	2.4
<b>Household Composition</b>										
With Children < 6	35,975		31,087	86.4	4,888	13.6	3,892	10.8	997	2.8
With Children < 18	80,318		70,781	88.1	9,537	11.9	7,299	9.1	2,238	2.8
Married Couple Families	61,197		56,118	91.7	5,079	8.3	4,044	6.6	1,035	1.7
Female Head, No Spouse	13,654		10,080	73.8	3,574	26.2	2,623	19.2	950	7.0
Male Head, No Spouse	4,040		3,362	83.2	678	16.8	503	12.5	175	4.3
Other Households with Child <sup>e</sup>	1,426		1,220	85.5	206	14.5	128	9.0	78	5.5
With No Children < 18	118,799		112,013	94.3	6,786	5.7	4,149	3.5	2,637	2.2
More Than One Adult	91,513		87,138	95.2	4,375	4.8	2,823	3.1	1,552	1.7
Women Living Alone	16,068		14,715	91.6	1,353	8.4	706	4.4	646	4.0
Men Living Alone	11,218		10,160	90.6	1,058	9.4	619	5.5	439	3.9
Households With Elderly	154,964		140,875	90.9	14,089	9.1	9,801	6.3	4,288	2.8
Elderly Living Alone	10,077		9,547	94.7	529	5.3	322	3.2	207	2.1
<b>Race and Hispanic Ethnicity</b>										
White, Non-Hispanic	147,918		139,760	94.5	8,158	5.5	5,643	3.8	2,515	1.7
Black, Non-Hispanic	22,983		18,903	82.2	4,080	17.8	2,897	12.6	1,183	5.1
Hispanic <sup>f</sup>	20,064		16,552	82.5	3,512	17.5	2,529	12.6	983	4.9
Other Non-Hispanic	8,152		7,579	93.0	573	7.0	379	4.6	194	2.4
<b>Household Income-to-Poverty Ratio</b>										
Under 1.00	179,848		170,004	94.5	9,844	5.5	7,086	3.9	2,758	1.5
Under 1.30	29,753		20,837	70.0	8,916	30.0	6,044	20.3	2,871	9.7
Under 1.85	48,454		35,859	74.0	11,595	23.9	8,088	16.7	3,507	7.2
1.85 and Over	124,727		121,163	97.1	3,564	2.9	2,579	2.1	985	0.8
Income Unknown	25,936		24,772	95.5	1,164	4.5	780	3.0	384	1.5
<b>Area of Residence<sup>g</sup></b>										
Inside Metropolitan Area	161,002		147,871	91.8	13,131	8.2	9,062	5.6	4,069	2.5
In Central City	147,918		139,760	94.5	8,158	5.5	5,643	3.8	2,515	1.7
Not In Central City	85,010		79,743	93.8	5,266	6.2	3,592	4.2	1,674	2.0
Outside Metropolitan Area	38,115		34,923	91.6	3,192	8.4	2,386	6.3	806	2.1
<b>Census Geographic Region</b>										
Northeast	38,526		36,041	93.6	2,485	6.4	1,709	4.4	776	2.0
Midwest	45,799		42,926	93.7	2,874	6.3	2,102	4.6	772	1.7
South	71,030		64,496	90.8	6,534	9.2	4,645	6.5	1,889	2.7
West	43,761		39,331	89.9	4,430	10.1	2,991	6.8	1,439	3.3

Source: Tabulations of Current Population Survey, Food Security Supplement data.  
d,e,f,g -- See End Notes

**TABLE C.5****Change In Household Food Security, Food Insecurity, and Hunger Prevalence, by Selected Household Characteristics, 1996-1998****(Based on data adjusted to be comparable to 1995-1997).<sup>dk</sup>****(percentages)**

CHARACTERISTIC	FOOD SECURE						FOOD INSECURE					
				All			Without Hunger			With Hunger		
	1996	1998	Change*	1996	1998	Change*	1996	1998	Change*	1996	1998	Change*
	%	%		%	%		%	%		%	%	
<b>All Households</b>	89.6	89.9	<b>0.3</b>	10.4	10.1	<b>-0.3</b>	6.3	6.6	<b>0.3</b>	4.1	3.5	<b>-0.6</b>
<b>Household Composition</b>												
With Children < 6	82.7	83.7	<b>1.0</b>	17.2	16.2	<b>-1.0</b>	11.9	12.4	<b>0.5</b>	5.2	3.8	<b>-1.4</b>
With Children < 18	84.5	84.8	<b>0.3</b>	15.4	15.2	<b>-0.2</b>	10.3	11.1	<b>0.8</b>	5.1	4.1	<b>-1.0</b>
Married Couple Families	89.8	90.4	<b>0.6</b>	7.0	9.6	<b>2.6</b>	7.1	7.6	<b>0.5</b>	2.9	2.0	<b>-0.9</b>
Female Head, No Spouse	68.6	68.1	<b>-0.5</b>	31.3	31.9	<b>0.6</b>	19.0	21.7	<b>2.7</b>	11.4	10.2	<b>-1.2</b>
Male Head, No Spouse	82.7	84.4	<b>1.7</b>	17.2	15.6	<b>-1.6</b>	11.4	10.6	<b>-0.8</b>	5.8	5.0	<b>-0.8</b>
Other Households with Child <sup>e</sup>	81.4	84.7	<b>3.3</b>	18.6	15.4	<b>-3.2</b>	13.4	9.4	<b>-4.0</b>	5.1	6.0	<b>0.9</b>
With No Children < 18	92.5	92.9	<b>0.4</b>	7.4	7.1	<b>-0.3</b>	3.9	4.0	<b>0.1</b>	3.4	3.1	<b>-0.3</b>
More Than One Adult	94.6	94.7	<b>0.1</b>	5.3	5.4	<b>0.1</b>	2.9	3.2	<b>0.3</b>	2.3	2.2	<b>-0.1</b>
Women Living Alone	90.0	90.7	<b>0.7</b>	9.9	9.3	<b>-0.6</b>	5.2	5.2	<b>0.0</b>	4.6	4.1	<b>-0.5</b>
Men Living Alone	89.3	89.7	<b>0.4</b>	10.6	10.3	<b>-0.3</b>	5.0	5.0	<b>0.0</b>	5.5	5.3	<b>-0.2</b>
Households With Elderly	95.0	94.5	<b>-0.5</b>	5.0	5.5	<b>0.5</b>	3.1	3.7	<b>0.6</b>	1.8	1.8	<b>0.0</b>
Elderly Living Alone	94.1	94.7	<b>0.6</b>	5.8	5.3	<b>-0.5</b>	3.6	3.4	<b>-0.2</b>	2.2	1.9	<b>-0.3</b>
<b>Race and Hispanic Ethnicity</b>												
White, Non-Hispanic	92.6	92.9	<b>0.3</b>	7.3	7.1	<b>-0.2</b>	4.4	4.6	<b>0.2</b>	2.9	2.5	<b>-0.4</b>
Black, Non-Hispanic	77.6	79.4	<b>1.8</b>	22.3	20.5	<b>-1.8</b>	13.8	12.5	<b>-1.3</b>	8.4	8.0	<b>-0.4</b>
Hispanic <sup>f</sup>	77.8	78.4	<b>0.6</b>	22.1	21.6	<b>-0.5</b>	13.4	15.1	<b>1.7</b>	8.6	6.5	<b>-2.1</b>
Other Non-Hispanic	90.0	88.8	<b>-1.2</b>	9.9	11.2	<b>1.3</b>	6.3	7.8	<b>1.5</b>	3.6	3.4	<b>-0.2</b>
<b>Household Income-to-Poverty Ratio</b>												
Under 1.00	65.0	64.7	<b>-0.3</b>	35.0	35.4	<b>0.4</b>	20.1	22.0	<b>1.9</b>	14.8	13.4	<b>-1.4</b>
Under 1.30	68.7	68.1	<b>-0.6</b>	31.2	31.9	<b>0.7</b>	18.2	20.3	<b>2.1</b>	12.9	11.6	<b>-1.3</b>
Under 1.85	74.8	74.0	<b>-0.8</b>	25.1	25.9	<b>0.8</b>	15.2	16.9	<b>1.7</b>	9.9	9.0	<b>-0.9</b>
1.85 and Over	96.9	96.4	<b>-0.5</b>	3.0	3.7	<b>0.7</b>	1.8	2.5	<b>0.7</b>	1.1	1.2	<b>0.1</b>
Income Unknown	95.3	94.4	<b>-0.9</b>	4.6	5.6	<b>1.0</b>	2.8	3.2	<b>0.4</b>	1.8	2.4	<b>0.6</b>
<b>Area of Residence<sup>g</sup></b>												
Inside Metropolitan Area	89.8	90.0	<b>0.2</b>	10.1	10.0	<b>-0.1</b>	6.0	6.5	<b>0.5</b>	4.0	3.5	<b>-0.5</b>
In Central City	86.3	86.0	<b>-0.3</b>	13.6	14.0	<b>0.4</b>	8.0	8.5	<b>0.5</b>	5.6	5.5	<b>-0.1</b>
Not In Central City	92.0	92.3	<b>0.3</b>	7.9	7.7	<b>-0.2</b>	4.7	5.2	<b>0.5</b>	3.2	2.5	<b>-0.7</b>
Outside Metropolitan Area	88.7	89.5	<b>0.8</b>	11.2	10.4	<b>-0.8</b>	7.2	7.1	<b>-0.1</b>	3.9	3.3	<b>-0.6</b>
<b>Census Geographic Region</b>												
Northeast	92.2	90.9	<b>-1.3</b>	7.7	9.1	<b>1.4</b>	4.6	5.9	<b>1.3</b>	3.0	3.2	<b>0.2</b>
Midwest	91.3	92.2	<b>0.9</b>	8.7	7.7	<b>-1.0</b>	5.2	5.1	<b>-0.1</b>	3.3	2.6	<b>-0.7</b>
South	88.1	89.0	<b>0.9</b>	11.8	11.0	<b>-0.8</b>	7.3	7.1	<b>-0.2</b>	4.5	3.9	<b>-0.6</b>
West	87.7	87.9	<b>0.2</b>	12.2	12.1	<b>-0.1</b>	7.3	7.9	<b>0.6</b>	4.9	4.2	<b>-0.7</b>

\*Change in percentage points.

Source: Tabulations of Current Population Survey, Food Security Supplement data.

d,e,f,g,k -- See End Notes

**TABLE C.6****Change In Household Food Security, Food Insecurity, and Hunger Prevalence, by Selected Household Characteristics, 1995-1999****(Based on data adjusted to be comparable to 1995-1997).<sup>dk</sup>****(percentages)**

CHARACTERISTIC	FOOD SECURE			All			FOOD INSECURE			With Hunger		
	1995	1999	Change*	1995	1999	Change*	1995	1999	Change*	1995	1999	Change*
	%	%		%	%		%	%		%	%	
<b>All Households</b>	89.7	91.3	<b>1.6</b>	10.3	8.7	<b>-1.6</b>	6.4	5.9	<b>-0.5</b>	3.9	2.8	<b>-1.1</b>
<b>Household Composition</b>												
With Children < 6	83.1	85.6	<b>2.5</b>	16.9	14.4	<b>-2.5</b>	11.9	11.4	<b>-0.5</b>	5.0	3.0	<b>-2.0</b>
With Children < 18	84.6	87.1	<b>2.5</b>	15.4	12.9	<b>-2.5</b>	10.5	9.7	<b>-0.8</b>	4.9	3.2	<b>-1.7</b>
Married Couple Families	90.1	92.0	<b>1.9</b>	9.9	8.0	<b>-1.9</b>	7.2	6.4	<b>-0.8</b>	2.6	1.6	<b>-1.0</b>
Female Head, No Spouse	67.8	73.0	<b>5.2</b>	32.2	26.9	<b>-5.3</b>	20.2	19.2	<b>-1.0</b>	11.9	7.7	<b>-4.2</b>
Male Head, No Spouse	83.9	84.9	<b>1.0</b>	16.1	15.1	<b>-1.0</b>	11.2	11.1	<b>-0.1</b>	4.8	4.0	<b>-0.8</b>
Other Households with Child <sup>e</sup>	82.1	86.3	<b>4.2</b>	18.1	13.7	<b>-4.4</b>	7.8	9.4	<b>1.6</b>	10.3	4.3	<b>-6.0</b>
With No Children < 18	92.8	93.6	<b>0.8</b>	7.2	6.3	<b>-0.9</b>	3.9	3.7	<b>-0.2</b>	3.3	2.6	<b>-0.7</b>
More Than One Adult	94.8	95.3	<b>0.5</b>	5.2	4.6	<b>-0.6</b>	3.1	2.9	<b>-0.2</b>	2.1	1.7	<b>-0.4</b>
Women Living Alone	90.5	91.6	<b>1.1</b>	9.5	8.4	<b>-1.1</b>	5.3	4.4	<b>-0.9</b>	4.2	4.0	<b>-0.2</b>
Men Living Alone	89.4	90.6	<b>1.2</b>	10.6	9.4	<b>-1.2</b>	4.6	5.5	<b>0.9</b>	6.0	3.9	<b>-2.1</b>
Households With Elderly	95.0	95.2	<b>0.2</b>	5.0	4.8	<b>-0.2</b>	3.1	3.3	<b>0.2</b>	1.9	1.5	<b>-0.4</b>
Elderly Living Alone	94.4	94.7	<b>0.3</b>	5.6	5.3	<b>-0.3</b>	3.2	3.2	<b>0.0</b>	2.4	2.1	<b>-0.3</b>
<b>Race and Hispanic Ethnicity</b>												
White, Non-Hispanic	92.6	93.9	<b>1.3</b>	7.4	6.0	<b>-1.4</b>	4.6	4.0	<b>-0.6</b>	2.8	2.0	<b>-0.8</b>
Black, Non-Hispanic	78.5	81.1	<b>2.6</b>	21.5	18.9	<b>-2.6</b>	12.8	12.8	<b>0.0</b>	8.8	6.1	<b>-2.7</b>
Hispanic <sup>f</sup>	77.5	82.2	<b>4.7</b>	22.5	17.7	<b>-4.8</b>	14.6	12.5	<b>-2.1</b>	7.9	5.2	<b>-2.7</b>
Other Non-Hispanic	89.8	91.7	<b>1.9</b>	10.2	8.3	<b>-1.9</b>	6.0	5.2	<b>-0.8</b>	4.2	3.1	<b>-1.1</b>
<b>Household Income-to-Poverty Ratio</b>												
Under 1.00	67.8	65.9	<b>-1.9</b>	32.2	34.1	<b>1.9</b>	19.2	22.1	<b>2.9</b>	13.0	12.0	<b>-1.0</b>
Under 1.30	70.9	69.9	<b>-1.0</b>	29.1	30.1	<b>1.0</b>	17.3	19.6	<b>2.3</b>	11.8	10.5	<b>-1.3</b>
Under 1.85	75.0	75.8	<b>0.8</b>	25.0	24.2	<b>-0.8</b>	15.3	16.2	<b>0.9</b>	9.8	8.0	<b>-1.8</b>
1.85 and Over	97.0	97.0	<b>0.0</b>	3.0	3.0	<b>0.0</b>	2.0	2.1	<b>0.1</b>	1.0	0.9	<b>-0.1</b>
Income Unknown	94.6	95.4	<b>0.8</b>	5.4	4.5	<b>-0.9</b>	3.3	2.8	<b>-0.5</b>	2.1	1.7	<b>-0.4</b>
<b>Area of Residence<sup>g</sup></b>												
Inside Metropolitan Area	89.8	91.3	<b>1.5</b>	10.2	8.7	<b>-1.5</b>	6.2	5.8	<b>-0.4</b>	4.0	2.9	<b>-1.1</b>
In Central City	85.8	88.0	<b>2.2</b>	14.2	12.0	<b>-2.2</b>	8.6	8.0	<b>-0.6</b>	5.6	4.0	<b>-1.6</b>
Not In Central City	92.1	93.3	<b>1.2</b>	7.9	6.7	<b>-1.2</b>	4.7	4.4	<b>-0.3</b>	3.2	2.3	<b>-0.9</b>
Outside Metropolitan Area	89.2	91.1	<b>1.9</b>	10.8	8.9	<b>-1.9</b>	7.0	6.3	<b>-0.7</b>	3.8	2.6	<b>-1.2</b>
<b>Census Geographic Region</b>												
Northeast	91.3	92.7	<b>1.4</b>	8.7	7.3	<b>-1.4</b>	5.4	4.8	<b>-0.6</b>	3.3	2.5	<b>-0.8</b>
Midwest	90.7	93.0	<b>2.3</b>	9.3	7.0	<b>-2.3</b>	5.8	5.0	<b>-0.8</b>	3.5	2.0	<b>-1.5</b>
South	89.0	90.3	<b>1.3</b>	11.0	9.7	<b>-1.3</b>	7.0	6.6	<b>-0.4</b>	4.1	3.1	<b>-1.0</b>
West	88.3	89.8	<b>1.5</b>	11.7	10.2	<b>-1.5</b>	7.0	6.6	<b>-0.4</b>	4.7	3.6	<b>-1.1</b>

\*Change in percentage points.

Source: Tabulations of Current Population Survey, Food Security Supplement data.

d,e,f,g,k -- See End Notes

**TABLE C.7****Change In Household Food Security, Food Insecurity, and Hunger Prevalence, by Selected Household Characteristics, 1997-1999****(Based on data adjusted to be comparable to 1995-1997).<sup>dk</sup>****(percentages)**

CHARACTERISTIC	FOOD SECURE			FOOD INSECURE								
	1997	1999	Change*	All			Without Hunger			With Hunger		
				1997	1999	Change*	1997	1999	Change*	1997	1999	Change*
	%	%		%	%		%	%		%	%	
<b>All Households</b>	91.2	91.3	<b>0.1</b>	8.7	8.7	<b>0.0</b>	5.6	5.9	<b>0.3</b>	3.1	2.8	<b>-0.3</b>
<b>Household Composition</b>												
With Children < 6	86.3	85.6	<b>-0.7</b>	13.6	14.4	<b>0.8</b>	10.1	11.4	<b>1.3</b>	3.4	3.0	<b>-0.4</b>
With Children < 18	84.1	87.1	<b>3.0</b>	12.8	12.9	<b>0.1</b>	9.1	9.7	<b>0.6</b>	3.6	3.2	<b>-0.4</b>
Married Couple Families	92.4	92.0	<b>-0.4</b>	7.5	8.0	<b>0.5</b>	5.7	6.4	<b>0.7</b>	1.8	1.6	<b>-0.2</b>
Female Head, No Spouse	72.0	73.0	<b>1.0</b>	27.9	26.9	<b>-1.0</b>	18.7	19.2	<b>0.5</b>	9.2	7.7	<b>-1.5</b>
Male Head, No Spouse	85.7	84.9	<b>-0.8</b>	14.2	15.1	<b>0.9</b>	11.4	11.1	<b>-0.3</b>	2.8	4.0	<b>1.2</b>
Other Households with Child <sup>e</sup>	85.1	86.3	<b>1.2</b>	14.8	13.7	<b>-1.1</b>	10.3	9.4	<b>-0.9</b>	4.4	4.3	<b>-0.1</b>
With No Children < 18	93.6	93.6	<b>0.0</b>	6.3	6.3	<b>0.0</b>	3.5	3.7	<b>0.2</b>	2.7	2.6	<b>-0.1</b>
More Than One Adult	95.4	95.3	<b>-0.1</b>	4.5	4.6	<b>0.1</b>	2.8	2.9	<b>0.1</b>	1.7	1.7	<b>0.0</b>
Women Living Alone	92.0	91.6	<b>-0.4</b>	7.9	8.4	<b>0.5</b>	4.4	4.4	<b>0.0</b>	3.5	4.0	<b>0.5</b>
Men Living Alone	90.5	90.6	<b>0.1</b>	9.3	9.4	<b>0.1</b>	4.5	5.5	<b>1.0</b>	4.8	3.9	<b>-0.9</b>
Households With Elderly	95.4	95.2	<b>-0.2</b>	4.5	4.8	<b>0.3</b>	3.1	3.3	<b>0.2</b>	1.4	1.5	<b>0.1</b>
Elderly Living Alone	95.0	94.7	<b>-0.3</b>	5.6	5.3	<b>-0.3</b>	3.1	3.2	<b>0.1</b>	1.7	2.1	<b>0.4</b>
<b>Race and Hispanic Ethnicity</b>												
White, Non-Hispanic	93.9	93.9	<b>0.0</b>	6.4	6.0	<b>-0.4</b>	3.7	4.0	<b>0.3</b>	2.3	2.0	<b>-0.3</b>
Black, Non-Hispanic	81.4	81.1	<b>-0.3</b>	18.5	18.9	<b>0.4</b>	12.1	12.8	<b>0.7</b>	6.4	6.1	<b>-0.3</b>
Hispanic <sup>f</sup>	80.5	82.2	<b>1.7</b>	19.4	17.7	<b>-1.7</b>	13.9	12.5	<b>-1.4</b>	5.4	5.2	<b>-0.2</b>
Other Non-Hispanic	92.0	91.7	<b>-0.3</b>	7.9	8.3	<b>0.4</b>	5.1	5.2	<b>0.1</b>	2.8	3.1	<b>0.3</b>
<b>Household Income-to-Poverty Ratio</b>												
Under 1.00	69.7	65.9	<b>-3.8</b>	30.2	34.1	<b>3.9</b>	18.7	22.1	<b>3.4</b>	11.5	12.0	<b>0.5</b>
Under 1.30	73.4	69.9	<b>-3.5</b>	26.5	30.1	<b>3.6</b>	16.6	19.6	<b>3.0</b>	9.8	10.5	<b>0.7</b>
Under 1.85	78.3	75.8	<b>-2.5</b>	21.7	24.2	<b>2.5</b>	14.0	16.2	<b>2.2</b>	7.6	8.0	<b>0.4</b>
1.85 and Over	97.4	97.0	<b>-0.4</b>	2.5	3.0	<b>0.5</b>	1.6	2.1	<b>0.5</b>	0.8	0.9	<b>0.1</b>
Income Unknown	95.1	95.4	<b>0.3</b>	3.2	4.5	<b>1.3</b>	3.0	2.8	<b>-0.2</b>	1.8	1.7	<b>-0.1</b>
<b>Area of Residence<sup>g</sup></b>												
Inside Metropolitan Area	91.4	91.3	<b>-0.1</b>	8.1	8.7	<b>0.6</b>	5.4	5.8	<b>0.4</b>	3.1	2.9	<b>-0.2</b>
In Central City	88.3	88.0	<b>-0.3</b>	11.6	12.0	<b>0.4</b>	6.9	8.0	<b>1.1</b>	4.6	4.0	<b>-0.6</b>
Not In Central City	93.3	93.3	<b>0.0</b>	6.6	6.7	<b>0.1</b>	4.4	4.4	<b>0.0</b>	2.2	2.3	<b>0.1</b>
Outside Metropolitan Area	90.6	91.1	<b>0.5</b>	9.3	8.9	<b>-0.4</b>	6.5	6.3	<b>-0.2</b>	2.8	2.6	<b>-0.2</b>
<b>Census Geographic Region</b>												
Northeast	92.1	92.7	<b>0.6</b>	7.8	7.3	<b>-0.5</b>	4.8	4.8	<b>0.0</b>	2.9	2.5	<b>-0.4</b>
Midwest	92.4	93.0	<b>0.6</b>	7.5	7.0	<b>-0.5</b>	4.6	5.0	<b>0.4</b>	2.9	2.0	<b>-0.9</b>
South	90.5	90.3	<b>-0.2</b>	9.4	9.7	<b>0.3</b>	6.3	6.6	<b>0.3</b>	3.1	3.1	<b>0.0</b>
West	90.4	89.8	<b>-0.6</b>	9.5	10.2	<b>0.7</b>	6.3	6.6	<b>0.3</b>	3.2	3.6	<b>0.4</b>

\*Change in percentage points.

Source: Tabulations of Current Population Survey, Food Security Supplement data.

d,e,f,g,k -- See End Notes

**TABLE C.8****Change In Prevalence of Hunger Among Children, by Selected Household Characteristics, 1996-1998, 1995-1999, 1997-1999**

(Based on data adjusted to be comparable to 1995-1997).

(percentages)

**CHARACTERISTIC**

	CHANGE IN PREVALENCE OF HUNGER AMONG CHILDREN								
	1996	1998	Change*	1995	1999	Change*	1997	1999	Change*
	%	%		%	%		%	%	
<b>All Households</b>	1.0	0.9	<b>-0.1</b>	1.1	0.6	<b>-0.5 **</b>	0.8	0.6	<b>-0.2 **</b>
<b>Household Composition</b>									
With Children < 6	0.8	0.5	<b>-0.3 **</b>	0.9	0.4	<b>-0.5 **</b>	0.6	0.4	<b>-0.2 **</b>
With Children < 18	1.0	0.9	<b>-0.1</b>	1.1	0.6	<b>-0.5 **</b>	0.8	0.6	<b>-0.2 **</b>
Married Couple Families	0.4	0.4	<b>0.0</b>	0.5	0.3	<b>-0.2 **</b>	0.3	0.3	<b>0.0</b>
Female Head, No Spouse	2.6	2.2	<b>-0.4</b>	2.6	1.4	<b>-1.2 **</b>	2.3	1.4	<b>-0.9 **</b>
Male Head, No Spouse	1.2	0.9	<b>-0.3</b>	1.3	0.8	<b>-0.5</b>	0.4	0.8	<b>0.4</b>
Other Households with Child <sup>e</sup>	1.6	1.8	<b>0.2</b>	1.9	0.5	<b>-1.4</b>	1.2	0.5	<b>-0.7</b>
<b>Race and Hispanic Ethnicity</b>									
White, Non-Hispanic	0.5	0.6	<b>0.1</b>	0.7	0.4	<b>-0.3 **</b>	0.5	0.4	<b>-0.1</b>
Black, Non-Hispanic	2.4	1.7	<b>-0.7</b>	2.2	1.0	<b>-1.2 **</b>	1.8	1.0	<b>-0.8 **</b>
Hispanic <sup>f</sup>	2.3	1.6	<b>-0.7</b>	2.2	1.0	<b>-1.2 **</b>	1.5	1.0	<b>-0.5</b>
Other Non-Hispanic	0.7	0.7	<b>0.0</b>	1.0	0.9	<b>-0.1</b>	0.7	0.9	<b>0.2</b>
<b>Household Income-to-Poverty Ratio</b>									
Under 1.00	3.3	3.0	<b>-0.3</b>	3.1	1.9	<b>-1.2 **</b>	2.0	1.9	<b>-0.1</b>
Under 1.30	3.2	2.9	<b>-0.3</b>	3.1	1.7	<b>-1.4 **</b>	2.1	1.7	<b>-0.4 **</b>
Under 1.85	2.2	0.2	<b>-2.0</b>	2.4	1.5	<b>-0.9 **</b>	1.8	1.5	<b>-0.3 **</b>
1.85 and Over	0.2	0.2	<b>0.0</b>	0.2	0.2	<b>0.0</b>	0.2	0.2	<b>0.0</b>
Income Unknown	0.7	0.4	<b>-0.3</b>	0.8	0.1	<b>-0.7 **</b>	0.6	0.1	<b>-0.5</b>
<b>Area of Residence<sup>g</sup></b>									
Inside Metropolitan Area	1.1	0.8	<b>-0.3</b>	1.2	0.6	<b>-0.6 **</b>	0.9	0.6	<b>-0.3 **</b>
In Central City	1.9	1.2	<b>-0.7 **</b>	1.6	0.7	<b>-0.9 **</b>	1.4	0.7	<b>-0.7 **</b>
Not In Central City	0.7	0.7	<b>0.0</b>	1.1	0.6	<b>-0.5 **</b>	0.6	0.6	<b>0.0</b>
Outside Metropolitan Area	0.6	1.1	<b>0.5</b>	0.6	0.4	<b>-0.2</b>	0.4	0.4	<b>0.0</b>
<b>Census Geographic Region</b>									
Northeast	0.9	0.7	<b>-0.2</b>	0.7	0.4	<b>-0.3 **</b>	0.7	0.4	<b>-0.3</b>
Midwest	0.7	0.8	<b>0.1</b>	0.8	0.4	<b>-0.4 **</b>	0.7	0.4	<b>-0.3 **</b>
South	1.0	0.9	<b>-0.1</b>	1.2	0.6	<b>-0.6 **</b>	0.8	0.6	<b>-0.2 **</b>
West	1.4	1.0	<b>-0.4</b>	1.6	0.9	<b>-0.7 **</b>	1.0	0.9	<b>-0.1</b>
<i>*Change in percentage points.</i>									
<i>**Significant at the .10 level of significance.</i>									

Source: Tabulations of Current Population Survey, Food Security Supplement data.  
e,f,g -- See End Notes

**D: Standard Errors of all Food Security Prevalence Rates**

**TABLE D.A.1**  
**Standard Errors of Household Food Security Status by Selected Household Characteristics, 1998.<sup>1</sup>**

CHARACTERISTIC	FOOD SECURE		FOOD INSECURE					
			All		Without Hunger		With Hunger	
	#	% pts.	#	% pts.	#	% pts.	#	% pts.
<b>All Households</b>	216,845	0.21	215,812	0.21	133,531	0.13	141,116	0.14
<b>Household Composition</b>	Percentage Points		Percentage Points		Percentage Points		Percentage Points	
With Children < 6	0.57		0.57		0.46		0.30	
With Children < 18	0.39		0.39		0.24		0.25	
Married Couple Families	0.39		0.39		0.30		0.16	
Female Head, No Spouse	0.93		0.93		0.64		0.63	
Male Head, No Spouse	2.21		2.21		1.47		1.10	
Other Households with Child <sup>e</sup>	2.15		2.15		1.82		1.25	
With No Children < 18	0.21		0.21		0.14		0.12	
More Than One Adult	0.29		0.29		0.20		0.17	
Women Living Alone	0.40		0.40		0.34		0.35	
Men Living Alone	0.48		0.48		0.35		0.29	
Households With Elderly	0.36		0.36		0.35		0.27	
Elderly Living Alone	0.29		0.29		0.18		0.18	
<b>Race and Hispanic Ethnicity</b>								
White, Non-Hispanic	0.19		0.19		0.13		0.12	
Black, Non-Hispanic	0.69		0.69		0.58		0.40	
Hispanic <sup>f</sup>	1.05		1.05		0.75		0.51	
Other Non-Hispanic	0.62		0.62		0.57		0.35	
<b>Household Income-to-Poverty Ratio</b>								
Under 1.00	0.71		0.71		0.50		0.52	
Under 1.30	0.57		0.57		0.45		0.40	
Under 1.85	0.49		0.49		0.34		0.35	
1.85 and Over	0.13		0.13		0.12		0.09	
Income Unknown	0.79		0.79		0.58		0.37	
<b>Area of Residence<sup>g</sup></b>								
Inside Metropolitan Area	0.25		0.25		0.16		0.14	
In Central City	0.38		0.38		0.28		0.26	
Not In Central City	0.39		0.39		0.25		0.19	
Outside Metropolitan Area	0.38		0.38		0.37		0.31	
<b>Census Geographic Region</b>								
Northeast	0.31		0.31		0.22		0.24	
Midwest	0.52		0.52		0.38		0.20	
South	0.40		0.40		0.19		0.32	
West	0.30		0.30		0.24		0.14	

Source: Tabulations of Current Population Survey, Food Security Supplement data.  
e,f,g,j -- See End Notes



<b>TABLE D.A.2</b>								
<b>Standard Errors of Number of Adults by Food Security Status of Household, by Selected Household Characteristics, 1998.<sup>aj</sup></b>								
<b>CHARACTERISTIC</b>	<b>FOOD SECURE</b>		<b>FOOD INSECURE</b>					
			<b>All</b>		<b>Without Hunger</b>		<b>With Hunger</b>	
	<b>#</b>	<b>% pts.</b>	<b>#</b>	<b>% pts.</b>	<b>#</b>	<b>% pts.</b>	<b>#</b>	<b>% pts.</b>
<b>Adults in All Households</b>	649,850	0.21	406,818	0.21	281,182	0.15	238,560	0.12
<b>Household Composition</b>	Percentage Points		Percentage Points		Percentage Points		Percentage Points	
With Children < 6	0.53		0.53		0.45		0.30	
With Children < 18	0.39		0.39		0.27		0.22	
Married Couple Families	0.45		0.45		0.35		0.18	
Female Head, No Spouse	0.95		0.95		0.73		0.57	
Male Head, No Spouse	2.49		2.49		1.76		1.25	
Other Households with Child <sup>c</sup>	2.38		2.38		1.85		1.13	
With No Children < 18	0.27		0.27		0.19		0.14	
More Than One Adult	0.34		0.34		0.24		0.19	
Women Living Alone	0.41		0.41		0.35		0.29	
Men Living Alone	0.47		0.47		0.34		0.34	
Households With Elderly	0.33		0.33		0.22		0.27	
Elderly Living Alone	0.37		0.37		0.35		0.28	
<b>Race and Hispanic Ethnicity</b>								
White, Non-Hispanic	0.19		0.19		0.14		0.12	
Black, Non-Hispanic	0.78		0.78		0.65		0.38	
Hispanic <sup>f</sup>	1.25		1.25		0.90		0.50	
Other Non-Hispanic	0.55		0.55		0.56		0.36	
<b>Household Income-to-Poverty Ratio</b>								
Under 1.00	0.90		0.90		0.67		0.55	
Under 1.30	0.70		0.70		0.56		0.38	
Under 1.85	0.52		0.52		0.43		0.34	
1.85 and Over	0.17		0.17		0.15		0.11	
Income Unknown	0.98		0.98		0.78		0.35	
<b>Area of Residence<sup>g</sup></b>								
Inside Metropolitan Area	0.24		0.24		0.17		0.12	
In Central City	0.39		0.39		0.32		0.21	
Not In Central City	0.36		0.36		0.25		0.16	
Outside Metropolitan Area	0.48		0.48		0.44		0.33	
<b>Census Geographic Region</b>								
Northeast	0.37		0.37		0.22		0.21	
Midwest	0.60		0.60		0.47		0.19	
South	0.35		0.35		0.22		0.27	
West	0.31		0.31		0.23		0.18	

Source: Tabulations of Current Population Survey, Food Security Supplement data.

a,e,f,g,j -- See End Notes

<b>TABLE D.A.3</b>								
<b>Standard Errors of Household Food Security Status by Selected Household Characteristics, 1999.<sup>1</sup></b>								
<b>CHARACTERISTIC</b>	<b>FOOD SECURE</b>		<b>FOOD INSECURE</b>					
			<b>All</b>		<b>Without Hunger</b>		<b>With Hunger</b>	
	<b>#</b>	<b>% pts.</b>	<b>#</b>	<b>% pts.</b>	<b>#</b>	<b>% pts.</b>	<b>#</b>	<b>% pts.</b>
<b>All Households</b>	244,113	0.23	243,661	0.23	184,683	0.18	100,754	0.10
<b>Household Composition</b>	<b>Percentage Points</b>		<b>Percentage Points</b>		<b>Percentage Points</b>		<b>Percentage Points</b>	
With Children < 6	0.57		0.57		0.54		0.20	
With Children < 18	0.39		0.39		0.34		0.16	
Married Couple Families	0.35		0.35		0.33		0.10	
Female Head, No Spouse	0.96		0.96		0.83		0.60	
Male Head, No Spouse	1.41		1.41		1.27		0.75	
Other Households with Child <sup>e</sup>	3.90		3.90		2.82		1.80	
With No Children < 18	0.23		0.23		0.17		0.12	
More Than One Adult	0.26		0.26		0.20		0.12	
Women Living Alone	0.34		0.34		0.29		0.22	
Men Living Alone	0.59		0.59		0.38		0.34	
Households With Elderly	0.31		0.31		0.22		0.17	
Elderly Living Alone	0.47		0.47		0.31		0.32	
<b>Race and Hispanic Ethnicity</b>								
White, Non-Hispanic	0.20		0.20		0.17		0.08	
Black, Non-Hispanic	0.87		0.87		0.87		0.32	
Hispanic <sup>f</sup>	0.74		0.74		0.58		0.27	
Other Non-Hispanic	1.08		1.08		0.92		0.56	
<b>Household Income-to-Poverty Ratio</b>								
Under 1.00	1.00		1.00		0.83		0.51	
Under 1.30	0.57		0.57		0.48		0.33	
Under 1.85	0.50		0.50		0.42		0.24	
1.85 and Over	0.26		0.26		0.21		0.09	
Income Unknown	0.53		0.53		0.43		0.23	
<b>Area of Residence<sup>g</sup></b>								
Inside Metropolitan Area	0.24		0.24		0.19		0.11	
In Central City	0.43		0.43		0.38		0.19	
Not In Central City	0.25		0.25		0.23		0.14	
Outside Metropolitan Area	0.37		0.37		0.37		0.17	
<b>Census Geographic Region</b>								
Northeast	0.61		0.61		0.52		0.16	
Midwest	0.45		0.45		0.38		0.18	
South	0.43		0.43		0.27		0.21	
West	0.26		0.26		0.26		0.26	

Source: Tabulations of Current Population Survey, Food Security Supplement data.  
e,f,g,j -- See End Notes

<b>TABLE D.A.4</b>								
<b>Standard Errors of Number of Adults by Food Security Status of Household, by Selected Household Characteristics, 1999.<sup>aj</sup></b>								
<b>CHARACTERISTIC</b>	<b>FOOD SECURE</b>		<b>FOOD INSECURE</b>					
			<b>All</b>		<b>Without Hunger</b>		<b>With Hunger</b>	
	<b>#</b>	<b>% pts.</b>	<b>#</b>	<b>% pts.</b>	<b>#</b>	<b>% pts.</b>	<b>#</b>	<b>% pts.</b>
<b>Adults in All Households</b>	618,797	0.26	542,481	0.26	420,649	0.20	178,630	0.09
<b>Household Composition</b>	<b>Percentage Points</b>		<b>Percentage Points</b>		<b>Percentage Points</b>		<b>Percentage Points</b>	
With Children < 6	0.53		0.53		0.50		0.21	
With Children < 18	0.36		0.36		0.31		0.14	
Married Couple Families	0.34		0.34		0.30		0.11	
Female Head, No Spouse	1.09		1.09		1.14		0.61	
Male Head, No Spouse	1.72		1.72		1.61		0.84	
Other Households with Child <sup>e</sup>	4.14		4.14		2.76		3.05	
With No Children < 18	0.28		0.28		0.23		0.10	
More Than One Adult	0.32		0.32		0.28		0.11	
Women Living Alone	0.35		0.35		0.30		0.22	
Men Living Alone	0.59		0.59		0.38		0.34	
Households With Elderly	0.38		0.38		0.29		0.15	
Elderly Living Alone	0.47		0.47		0.31		0.31	
<b>Race and Hispanic Ethnicity</b>								
White, Non-Hispanic	0.22		0.22		0.18		0.07	
Black, Non-Hispanic	0.92		0.92		0.76		0.31	
Hispanic <sup>f</sup>	0.80		0.80		0.61		0.32	
Other Non-Hispanic	1.14		1.14		0.95		0.52	
<b>Household Income-to-Poverty Ratio</b>								
Under 1.00	0.96		0.96		0.80		0.46	
Under 1.30	0.53		0.53		0.45		0.33	
Under 1.85	0.49		0.49		0.41		0.23	
1.85 and Over	0.27		0.27		0.22		0.07	
Income Unknown	0.64		0.64		0.49		0.23	
<b>Area of Residence<sup>g</sup></b>								
Inside Metropolitan Area	0.27		0.27		0.21		0.10	
In Central City	0.47		0.47		0.41		0.19	
Not In Central City	0.32		0.32		0.29		0.14	
Outside Metropolitan Area	0.40		0.40		0.33		0.16	
<b>Census Geographic Region</b>								
Northeast	0.48		0.48		0.40		0.13	
Midwest	0.56		0.56		0.48		0.19	
South	0.50		0.50		0.35		0.18	
West	0.35		0.35		0.32		0.09	

Source: Tabulations of Current Population Survey, Food Security Supplement data.

a,e,f,g,j -- See End Notes

<b>TABLE D.A.5</b>		
<b>Standard Errors of Food Security Scale Item Responses, 1998 and 1999.</b>		
<b>Scale Item<sup>i</sup></b>	<b>Percent of All Households Affirming Item (percentage points)</b>	
	<b>1998</b>	<b>1999</b>
<b>Household Items:</b>		
Worried food would run out before (I/we) got money to buy more	0.27	0.33
Food bought didn't last and (I/we) didn't have money to get more	0.20	0.29
Couldn't afford to eat balanced meals	0.50	0.48
<b>Adult Items:</b>		
Adult(s) cut size of meals or skipped meals	0.13	0.09
Respondent ate less than felt he/she should	0.08	0.08
Adult(s) cut size or skipped meals in 3 or more months	0.18	0.19
Respondent hungry but didn't eat because couldn't afford	0.13	0.06
Respondent lost weight	0.06	0.07
Adult(s) did not eat for whole day	0.20	0.09
Adult(s) did not eat for whole day in 3 or more months	0.13	0.12
<b>Child Items:<sup>h</sup></b>		
(See Table D.A.6)		

Source: Tabulations of Current Population Survey, Food Security Supplement data.

h,i -- See End Notes

**TABLE D.A.6****Standard Errors of Food Security Scale Item Responses Among Households with Children, 1998 and 1999.**

<b>Scale Item<sup>i</sup></b>	<b>Percent of All Households Affirming Item (percentage points)</b>	
	<b>1998</b>	<b>1999</b>
<b>Household Items:</b>		
Worried food would run out before (I/we) got money to buy more	0.48	0.51
Food bought didn't last and (I/we) didn't have money to get more	0.37	0.52
Couldn't afford to eat balanced meals	0.50	0.48
<b>Adult Items:</b>		
Adult(s) cut size of meals or skipped meals	0.24	0.17
Respondent ate less than felt he/she should	0.16	0.15
Adult(s) cut size or skipped meals in 3 or more months	0.31	0.23
Respondent hungry but didn't eat because couldn't afford	0.13	0.06
Respondent lost weight	0.09	0.10
Adult(s) did not eat for whole day	0.20	0.09
Adult(s) did not eat for whole day in 3 or more months	0.22	0.16
<b>Child Items:<sup>h</sup></b>		
Relied on few kinds of low-cost food to feed child(ren)	0.33	0.35
Couldn't feed child(ren) balanced meals	0.35	0.26
Child(ren) were not eating enough	0.30	0.24
Cut size of child(ren)'s meals	0.07	0.09
Child(ren) were hungry	0.10	0.05
Child(ren) skipped meals	0.27	0.22
Child(ren) skipped meals in 3 or more months	0.05	0.05
Child(ren) did not eat for whole day	0.04	0.04

**TABLE D.A.7****Standard Errors of Food Security Scale Item Responses, 1998 and 1999.<sup>d</sup> (Based on data adjusted to be comparable to 1995-1997).**

<b>Scale Item<sup>i</sup></b>	<b>Percent of All Households Affirming Item (percentage points)</b>	
	<b>1998</b>	<b>1999</b>
<b>Household Items:</b>		
Worried food would run out before (I/we) got money to buy more	0.27	0.33
Food bought didn't last and (I/we) didn't have money to get more	0.20	0.29
Couldn't afford to eat balanced meals	0.50	0.48
<b>Adult Items:</b>		
Adult(s) cut size of meals or skipped meals	0.13	0.09
Respondent ate less than felt he/she should	0.08	0.08
Adult(s) cut size or skipped meals in 3 or more months	0.18	0.19
Respondent hungry but didn't eat because couldn't afford	0.13	0.06
Respondent lost weight	0.06	0.07
Adult(s) did not eat for whole day	0.20	0.09
Adult(s) did not eat for whole day in 3 or more months	0.13	0.12
<b>Child Items:<sup>h</sup></b> (See Table D.A.8)		

Source: Tabulations of Current Population Survey, Food Security Supplement data.

d,h,i -- See End Notes

**TABLE D.A.8**  
**Standard Errors of Food Security Scale Item Responses Among Households with Children, 1998 and 1999.<sup>d</sup>** (Based on data adjusted to be comparable to 1995-1997).

<b>Scale Item<sup>i</sup></b>	<b>Percent of All Households Affirming Item (percentage points)</b>	
	<b>1998</b>	<b>1999</b>
<b>Household Items:</b>		
Worried food would run out before (I/we) got money to buy more	0.48	0.51
Food bought didn't last and (I/we) didn't have money to get more	0.37	0.52
Couldn't afford to eat balanced meals	0.50	0.48
<b>Adult Items:</b>		
Adult(s) cut size of meals or skipped meals	0.24	0.17
Respondent ate less than felt he/she should	0.16	0.15
Adult(s) cut size or skipped meals in 3 or more months	0.31	0.23
Respondent hungry but didn't eat because couldn't afford	0.13	0.06
Respondent lost weight	0.09	0.10
Adult(s) did not eat for whole day	0.20	0.09
Adult(s) did not eat for whole day in 3 or more months	0.22	0.16
<b>Child Items:<sup>h</sup></b>		
Relied on few kinds of low-cost food to feed child(ren)	0.33	0.35
Couldn't feed child(ren) balanced meals	0.35	0.26
Child(ren) were not eating enough	0.30	0.24
Cut size of child(ren)'s meals	0.07	0.09
Child(ren) were hungry	0.10	0.05
Child(ren) skipped meals	0.27	0.22
Child(ren) skipped meals in 3 or more months	0.05	0.05
Child(ren) did not eat for whole day	0.04	0.04

Source: Tabulations of Current Population Survey, Food Security Supplement data.

d,h,i -- See End Notes

**TABLE D.B.1**

**Standard Errors of Food Insecurity and Hunger Among Households with Children, by Selected Household Characteristics, 1998.<sup>j</sup>**

CHARACTERISTIC	Food Insecure		Food Insecure Without Hunger		Food Insecure With Hunger Among Adults But Not Children		Food Insecure With Hunger Among Adults and Children	
	#	% pts.	#	% pts.	#	% pts.	#	% pts.
<b>Households with Children&lt;18</b>	143,551	0.39	98,511	0.24	59,991	0.17	51,475	0.14
<b>Household Composition</b>	Percentage Points		Percentage Points		Percentage Points		Percentage Points	
With Children < 6	0.57		0.46		0.31		0.09	
Married Couple Families	0.39		0.30		0.12		0.09	
Female Head, No Spouse	0.93		0.64		0.42		0.38	
Male Head, No Spouse	2.21		1.47		0.91		0.51	
Other Households with Child <sup>c</sup>	2.15		1.82		1.11		0.89	
<b>Race and Hispanic Ethnicity</b>								
White, Non-Hispanic	0.38		0.26		0.22		0.09	
Black, Non-Hispanic	1.06		0.87		0.58		0.30	
Hispanic <sup>f</sup>	1.20		0.81		0.38		0.44	
Other Non-Hispanic	1.63		0.97		0.79		0.54	
<b>Household Income-to-Poverty Ratio</b>								
Under 1.00	1.05		0.87		0.76		0.53	
Under 1.30	0.87		0.84		0.61		0.53	
Under 1.85	0.84		0.59		0.37		0.40	
1.85 and Over	0.28		0.22		0.11		0.06	
Income Unknown	1.82		1.09		1.03		0.19	
<b>Area of Residence<sup>g</sup></b>								
Inside Metropolitan Area	0.42		0.30		0.16		0.14	
In Central City	0.72		0.55		0.38		0.22	
Not In Central City	0.81		0.48		0.28		0.21	
Outside Metropolitan Area	0.87		0.79		0.47		0.24	
<b>Census Geographic Region</b>								
Northeast	0.44		0.30		0.21		0.14	
Midwest	0.98		0.76		0.40		0.17	
South	0.80		0.38		0.33		0.32	
West	0.37		0.25		0.28		0.28	

Source: Tabulations of Current Population Survey, Food Security Supplement data.  
e,f,g,i -- See End Notes



**TABLE D.B.2**

**Standard Errors of Number of Children in Households with Food Insecurity and Hunger, by Selected Household Characteristics, 1998.<sup>bj</sup>**

CHARACTERISTIC	Food Insecure		Food Insecure Without Hunger		Food Insecure With Hunger Among Adults But Not Children		Food Insecure With Hunger Among Adults and Children	
	#	% pts.	#	% pts.	#	% pts.	#	% pts.
<b>Children in all Households</b>	390,457	0.48	276,000	0.34	166,151	0.23	123,532	0.17
<b>Household Composition</b>	Percentage Points		Percentage Points		Percentage Points		Percentage Points	
Married Couple Families	0.54		0.42		0.15		0.13	
Female Head, No Spouse	1.54		0.90		0.70		0.70	
Male Head, No Spouse	2.37		1.77		0.96		0.99	
Other Households with Child <sup>e</sup>	3.14		2.97		1.31		0.85	
<b>Race and Hispanic Ethnicity</b>	Percentage Points		Percentage Points		Percentage Points		Percentage Points	
White, Non-Hispanic	0.41		0.34		0.21		0.09	
Black, Non-Hispanic	1.20		1.00		0.83		0.51	
Hispanic <sup>f</sup>	1.22		0.82		0.71		0.46	
Other Non-Hispanic	2.86		1.87		1.09		0.88	
<b>Household Income-to-Poverty Ratio</b>	Percentage Points		Percentage Points		Percentage Points		Percentage Points	
Under 1.00	1.25		1.47		1.03		0.56	
Under 1.30	1.06		1.34		0.84		0.56	
Under 1.85	0.90		0.78		0.55		0.44	
1.85 and Over	0.30		0.24		0.12		0.09	
Income Unknown	2.01		1.60		0.97		0.14	
<b>Area of Residence<sup>g</sup></b>	Percentage Points		Percentage Points		Percentage Points		Percentage Points	
Inside Metropolitan Area	0.55		0.41		0.25		0.21	
In Central City	0.81		0.82		0.52		0.34	
Not In Central City	1.13		0.62		0.48		0.28	
Outside Metropolitan Area	0.89		0.85		0.56		0.22	
<b>Census Geographic Region</b>	Percentage Points		Percentage Points		Percentage Points		Percentage Points	
Northeast	0.43		0.32		0.23		0.11	
Midwest	1.10		1.02		0.40		0.14	
South	1.11		0.61		0.40		0.46	
West	0.48		0.39		0.64		0.26	

Source: Tabulations of Current Population Survey, Food Security Supplement data.

b,e,f,g,i -- See End Notes

**TABLE D.B.3**  
**Standard Errors of Food Insecurity and Hunger Among Households with Children, by Selected Household Characteristics, 1999.<sup>j</sup>**

CHARACTERISTIC	Food Insecure		Food Insecure Without Hunger		Food Insecure With Hunger Among Adults But Not Children		Food Insecure With Hunger Among Adults and Children	
	#	% pts.	#	% pts.	#	% pts.	#	% pts.
<b>Households with Children</b>	128,259	0.39	116,537	0.34	56,038	0.15	22,185	0.06
<b>Household Composition</b>	Percentage Points		Percentage Points		Percentage Points		Percentage Points	
With Children < 6	0.57		0.54		0.20		0.07	
Married Couple Families	0.35		0.33		0.11		0.06	
Female Head, No Spouse	0.96		0.83		0.61		0.19	
Male Head, No Spouse	1.41		1.27		0.62		0.34	
Other Households with Child <sup>e</sup>	3.90		2.82		1.69		0.61	
<b>Race and Hispanic Ethnicity</b>								
White, Non-Hispanic	0.40		0.39		0.11		0.07	
Black, Non-Hispanic	1.53		1.10		0.76		0.25	
Hispanic <sup>f</sup>	0.77		0.65		0.35		0.17	
Other Non-Hispanic	1.34		1.12		0.63		0.41	
<b>Household Income-to-Poverty Ratio</b>								
Under 1.00	1.23		1.10		0.60		0.31	
Under 1.30	0.85		0.90		0.50		0.28	
Under 1.85	0.83		0.74		0.36		0.17	
1.85 and Over	0.45		0.39		0.12		0.04	
Income Unknown	1.29		0.97		0.75		0.12	
<b>Area of Residence<sup>g</sup></b>								
Inside Metropolitan Area	0.42		0.38		0.20		0.06	
In Central City	0.91		0.82		0.33		0.10	
Not In Central City	0.59		0.51		0.34		0.10	
Outside Metropolitan Area	0.71		0.67		0.25		0.12	
<b>Census Geographic Region</b>								
Northeast	1.15		0.93		0.47		0.15	
Midwest	0.99		0.94		0.14		0.08	
South	0.57		0.43		0.26		0.08	
West	0.30		0.46		0.36		0.17	

Source: Tabulations of Current Population Survey, Food Security Supplement data.  
e,f,g,i – See End Notes

<b>TABLE D.B.4</b>								
<b>Standard Errors of Number of Children in Households with Food Insecurity and Hunger, by Selected Household Characteristics, 1999.<sup>bj</sup></b>								
<b>CHARACTERISTIC</b>	<b>Food Insecure</b>		<b>Food Insecure Without Hunger</b>		<b>Food Insecure With Hunger Among Adults But Not Children</b>		<b>Food Insecure With Hunger Among Adults and Children</b>	
	<b>#</b>	<b>% pts.</b>	<b>#</b>	<b>% pts.</b>	<b>#</b>	<b>% pts.</b>	<b>#</b>	<b>% pts.</b>
<b>Children in all Households</b>	293,719	0.46	280,677	0.43	119,927	0.17	63,953	0.09
<b>Household Composition</b>	<b>Percentage Points</b>		<b>Percentage Points</b>		<b>Percentage Points</b>		<b>Percentage Points</b>	
Married Couple Families	0.46		0.43		0.17		0.09	
Female Head, No Spouse	1.05		1.12		0.61		0.61	
Male Head, No Spouse	2.12		1.65		0.92		0.41	
Other Households with Child <sup>e</sup>	4.90		3.41		2.07		2.24	
<b>Race and Hispanic Ethnicity</b>	<b>Percentage Points</b>		<b>Percentage Points</b>		<b>Percentage Points</b>		<b>Percentage Points</b>	
White, Non-Hispanic	0.45		0.45		0.13		0.11	
Black, Non-Hispanic	1.46		1.12		0.69		0.29	
Hispanic <sup>f</sup>	1.13		0.93		0.57		0.26	
Other Non-Hispanic	2.12		1.71		0.92		0.88	
<b>Household Income-to-Poverty Ratio</b>	<b>Percentage Points</b>		<b>Percentage Points</b>		<b>Percentage Points</b>		<b>Percentage Points</b>	
Under 1.00	1.34		1.22		0.66		0.39	
Under 1.30	0.91		1.06		0.55		0.33	
Under 1.85	0.82		0.84		0.39		0.23	
1.85 and Over	0.52		0.46		0.11		0.05	
Income Unknown	2.17		1.73		0.95		0.23	
<b>Area of Residence<sup>g</sup></b>	<b>Percentage Points</b>		<b>Percentage Points</b>		<b>Percentage Points</b>		<b>Percentage Points</b>	
Inside Metropolitan Area	0.52		0.48		0.22		0.09	
In Central City	1.09		1.05		0.35		0.14	
Not In Central City	0.72		0.66		0.44		0.14	
Outside Metropolitan Area	0.84		0.80		0.32		0.21	
<b>Census Geographic Region</b>	<b>Percentage Points</b>		<b>Percentage Points</b>		<b>Percentage Points</b>		<b>Percentage Points</b>	
Northeast	1.34		1.25		0.29		0.09	
Midwest	1.22		1.09		0.18		0.17	
South	0.58		0.57		0.25		0.11	
West	0.54		0.46		0.59		0.29	

Source: Tabulations of Current Population Survey, Food Security Supplement data.

b,e,f,g,j -- See End Notes

<b>TABLE D.B.5-7</b>						
<b>Standard Errors of Food Insecurity and Hunger Among Households with Children, by Selected Household Characteristics, 1995, 1996, 1997.<sup>j</sup></b>						
<b>CHARACTERISTIC</b>	<b>Food Insecure With Hunger Among Adults and Children, Standard Errors, 1995-1997.</b>					
	<b>1995</b>		<b>1996</b>		<b>1997</b>	
	<b>#</b>	<b>% pts.</b>	<b>#</b>	<b>% pts.</b>	<b>#</b>	<b>% pts.</b>
<b>Households With Children</b>	36,279	0.09	39,138	0.10	37,644	0.10
<b>Household Composition</b>	<b>Percentage Points</b>		<b>Percentage Points</b>		<b>Percentage Points</b>	
With Children < 6	0.12		0.13		0.08	
With Children < 18	0.09		0.10		0.10	
Married Couple Families	0.07		0.05		0.06	
Female Head, No Spouse	0.31		0.33		0.26	
Male Head, No Spouse	0.53		0.53		0.20	
Other Households with Child <sup>e</sup>	1.70		0.84		0.86	
<b>Race and Hispanic Ethnicity</b>						
White, Non-Hispanic	0.10		0.07		0.07	
Black, Non-Hispanic	0.40		0.43		0.29	
Hispanic <sup>f</sup>	0.35		0.40		0.27	
Other Non-Hispanic	0.36		0.35		0.35	
<b>Household Income-to-Poverty Ratio</b>						
Under 1.00	0.30		0.58		0.44	
Under 1.30	0.29		0.36		0.28	
Under 1.85	0.22		0.24		0.21	
1.85 and Over	0.04		0.04		0.06	
Income Unknown	0.26		0.34		0.28	
<b>Area of Residence<sup>g</sup></b>						
Inside Metropolitan Area	0.11		0.11		0.12	
In Central City	0.22		0.34		0.24	
Not In Central City	0.17		0.11		0.12	
Outside Metropolitan Area	0.14		0.13		0.14	
<b>Census Geographic Region</b>						
Northeast	0.13		0.11		0.32	
Midwest	0.19		0.09		0.11	
South	0.19		0.23		0.11	
West	0.18		0.22		0.25	

Source: Tabulations of Current Population Survey, Food Security Supplement data.  
e,g,j -- See End Notes

**TABLE D.B.8-10****Standard Errors of Number of Children in Households with Food Insecurity and Hunger, by Selected Household Characteristics, 1995, 1996, 1997.<sup>bj</sup>**

CHARACTERISTIC	Food Insecure With Hunger Among Adults and Children, Standard Errors, 1995-1997.					
	1995		1996		1997	
	#	% pts.	#	% pts.	#	% pts.
<b>Households With Children</b>	84,433	0.12	188,048	0.12	158,399	0.10
<b>Household Composition</b>	Percentage Points		Percentage Points		Percentage Points	
With Children < 18	0.12		0.12		0.10	
Married Couple Families	0.13		0.09		0.07	
Female Head, No Spouse	0.31		0.40		0.28	
Male Head, No Spouse	0.44		0.61		0.20	
Other Households with Child <sup>c</sup>	2.04		0.73		0.77	
<b>Race and Hispanic Ethnicity</b>						
White, Non-Hispanic	0.11		0.07		0.07	
Black, Non-Hispanic	0.51		0.42		0.32	
Hispanic <sup>f</sup>	0.44		0.58		0.27	
Other Non-Hispanic	0.41		0.35		0.49	
<b>Household Income-to-Poverty Ratio</b>						
Under 1.00	0.41		0.56		0.39	
Under 1.30	0.38		0.40		0.27	
Under 1.85	0.26		0.30		0.21	
1.85 and Over	0.06		0.05		0.06	
Income Unknown	0.31		0.39		0.20	
<b>Area of Residence<sup>g</sup></b>						
Inside Metropolitan Area	0.14		0.14		0.13	
In Central City	0.22		0.44		0.30	
Not In Central City	0.27		0.11		0.24	
Outside Metropolitan Area	0.16		0.15		0.11	
<b>Census Geographic Region</b>						
Northeast	0.10		0.18		0.38	
Midwest	0.19		0.09		0.18	
South	0.25		0.26		0.09	
West	0.29		0.33		0.22	

Source: Tabulations of Current Population Survey, Food Security Supplement data.

b,e,f,g,j -- See End Notes

**TABLE D.C.1**

**Standard Errors of Household Food Security Status, by Selected Household Characteristics, 1998.<sup>d</sup>**  
**(Based on data adjusted to be comparable to 1995-1997.)**

CHARACTERISTIC	FOOD SECURE		FOOD INSECURE					
			All		Without Hunger		With Hunger	
	#	% pts.	#	% pts.	#	% pts.	#	% pts.
<b>All Households</b>	172,127	0.17	174,381	0.17	117,257	0.11	128,254	0.12
<b>Household Composition</b>	Percentage Points		Percentage Points		Percentage Points		Percentage Points	
With Children < 6	0.50		0.50		0.44		0.29	
With Children < 18	0.33		0.33		0.23		0.22	
Married Couple Families	0.36		0.36		0.27		0.14	
Female Head, No Spouse	0.76		0.76		0.62		0.56	
Male Head, No Spouse	1.63		1.63		1.14		0.84	
Other Households with Child <sup>e</sup>	2.05		2.05		1.73		1.21	
With No Children < 18	0.17		0.17		0.12		0.11	
More Than One Adult	0.24		0.24		0.17		0.14	
Women Living Alone	0.34		0.34		0.28		0.28	
Men Living Alone	0.40		0.40		0.29		0.35	
Households With Elderly	0.27		0.27		0.17		0.19	
Elderly Living Alone	0.32		0.32		0.36		0.26	
<b>Race and Hispanic Ethnicity</b>								
White, Non-Hispanic	0.17		0.17		0.11		0.11	
Black, Non-Hispanic	0.61		0.61		0.53		0.42	
Hispanic <sup>f</sup>	0.85		0.85		0.56		0.48	
Other Non-Hispanic	0.64		0.64		0.55		0.43	
<b>Household Income-to-Poverty Ratio</b>								
Under 1.00	0.69		0.69		0.50		0.49	
Under 1.30	0.55		0.55		0.44		0.39	
Under 1.85	0.46		0.46		0.32		0.34	
1.85 and Over	0.12		0.12		0.11		0.08	
Income Unknown	0.53		0.53		0.35		0.33	
<b>Area of Residence<sup>g</sup></b>								
Inside Metropolitan Area	0.20		0.20		0.13		0.12	
In Central City	0.30		0.30		0.23		0.25	
Not In Central City	0.35		0.35		0.23		0.17	
Outside Metropolitan Area	0.41		0.41		0.36		0.30	
<b>Census Geographic Region</b>								
Northeast	0.34		0.34		0.22		0.23	
Midwest	0.39		0.39		0.25		0.22	
South	0.31		0.31		0.19		0.28	
West	0.27		0.27		0.26		0.10	

Source: Tabulations of Current Population Survey, Food Security Supplement data.

d,e,f,g -- See End Notes

**TABLE D.C.2****Standard Errors of Number of Adults by Food Security Status of Household, by Selected Household Characteristics, 1998.<sup>ad</sup> (Based on data adjusted to be comparable to 1995-1997.)**

CHARACTERISTIC	FOOD SECURE		FOOD INSECURE					
			All		Without Hunger		With Hunger	
	#	% pts.	#	% pts.	#	% pts.	#	% pts.
<b>Adults in All Households</b>	528,005	0.20	421,842	0.20	331,567	0.16	156,333	0.08
<b>Household Composition</b>	Percentage Points		Percentage Points		Percentage Points		Percentage Points	
With Children < 6	0.42		0.42		0.39		0.20	
With Children < 18	0.31		0.31		0.28		0.13	
Married Couple Families	0.33		0.33		0.32		0.11	
Female Head, No Spouse	1.04		1.04		0.90		0.51	
Male Head, No Spouse	1.90		1.90		1.79		0.85	
Other Households with Child <sup>e</sup>	4.25		4.25		2.90		3.04	
With No Children < 18	0.23		0.23		0.19		0.09	
More Than One Adult	0.25		0.25		0.22		0.10	
Women Living Alone	0.34		0.34		0.28		0.23	
Men Living Alone	0.57		0.57		0.35		0.33	
Households With Elderly	0.34		0.34		0.26		0.15	
Elderly Living Alone	0.42		0.42		0.28		0.31	
<b>Race and Hispanic Ethnicity</b>								
White, Non-Hispanic	0.18		0.18		0.16		0.07	
Black, Non-Hispanic	0.82		0.82		0.72		0.29	
Hispanic <sup>f</sup>	0.65		0.65		0.53		0.26	
Other Non-Hispanic	1.03		1.03		0.78		0.52	
<b>Household Income-to-Poverty Ratio</b>								
Under 1.00	1.09		1.09		0.88		0.48	
Under 1.30	0.56		0.56		0.49		0.31	
Under 1.85	0.52		0.52		0.47		0.22	
1.85 and Over	0.19		0.19		0.16		0.06	
Income Unknown	0.58		0.58		0.41		0.25	
<b>Area of Residence<sup>g</sup></b>								
Inside Metropolitan Area	0.21		0.21		0.17		0.09	
In Central City	0.39		0.39		0.37		0.18	
Not In Central City	0.26		0.26		0.23		0.14	
Outside Metropolitan Area	0.34		0.34		0.28		0.16	
<b>Census Geographic Region</b>								
Northeast	0.44		0.44		0.36		0.14	
Midwest	0.47		0.47		0.42		0.17	
South	0.35		0.35		0.25		0.14	
West	0.19		0.19		0.21		0.09	

Source: Tabulations of Current Population Survey, Food Security Supplement data.

a,d,e,f,g -- See End Notes

**TABLE D.C.3**

**Standard Errors of Household Food Security Status, by Selected Household Characteristics, 1999<sup>d</sup>**  
**(Based on data adjusted to be comparable to 1995-1997.)**

CHARACTERISTIC	FOOD SECURE		FOOD INSECURE					
			All		Without Hunger		With Hunger	
	#	% pts.	#	% pts.	#	% pts.	#	% pts.
<b>All Households</b>	199,817	0.19	202,685	0.19	157,261	0.15	90,891	0.09
<b>Household Composition</b>	Percentage Points		Percentage Points		Percentage Points		Percentage Points	
With Children < 6	0.50		0.50		0.48		0.20	
With Children < 18	0.35		0.35		0.30		0.14	
Married Couple Families	0.34		0.34		0.32		0.09	
Female Head, No Spouse	0.97		0.97		0.72		0.52	
Male Head, No Spouse	1.56		1.56		1.35		0.79	
Other Households with Child <sup>e</sup>	3.94		3.94		2.89		1.79	
With No Children < 18	0.20		0.20		0.15		0.11	
More Than One Adult	0.21		0.21		0.16		0.10	
Women Living Alone	0.34		0.34		0.28		0.23	
Men Living Alone	0.57		0.57		0.35		0.33	
Households With Elderly	0.27		0.27		0.19		0.16	
Elderly Living Alone	0.43		0.43		0.28		0.31	
<b>Race and Hispanic Ethnicity</b>								
White, Non-Hispanic	0.17		0.17		0.16		0.07	
Black, Non-Hispanic	0.86		0.86		0.73		0.31	
Hispanic <sup>f</sup>	0.63		0.63		0.50		0.24	
Other Non-Hispanic	0.97		0.97		0.73		0.56	
<b>Household Income-to-Poverty Ratio</b>								
Under 1.00	1.06		1.06		0.85		0.50	
Under 1.30	0.59		0.59		0.49		0.31	
Under 1.85	0.48		0.48		0.42		0.23	
1.85 and Over	0.19		0.19		0.15		0.07	
Income Unknown	0.47		0.47		0.35		0.25	
<b>Area of Residence<sup>g</sup></b>								
Inside Metropolitan Area	0.21		0.21		0.17		0.10	
In Central City	0.38		0.38		0.35		0.18	
Not In Central City	0.23		0.23		0.21		0.14	
Outside Metropolitan Area	0.33		0.33		0.27		0.17	
<b>Census Geographic Region</b>								
Northeast	0.55		0.55		0.44		0.17	
Midwest	0.37		0.37		0.32		0.18	
South	0.35		0.35		0.24		0.17	
West	0.21		0.21		0.19		0.12	

Source: Tabulations of Current Population Survey, Food Security Supplement data.  
d,e,f,g -- See End Notes



**TABLE D.C.4**

**Standard Errors of Number of Adults by Food Security Status of Household, by Selected Household Characteristics, 1999.<sup>ad</sup> (Based on data adjusted to be comparable to 1995-1997.)**

CHARACTERISTIC	FOOD SECURE		FOOD INSECURE					
			All		Without Hunger		With Hunger	
	#	% pts.	#	% pts.	#	% pts.	#	% pts.
<b>All Households</b>	528,005	0.20	421,842	0.20	331,567	0.16	156,333	0.08
<b>Household Composition</b>	Percentage Points		Percentage Points		Percentage Points		Percentage Points	
With Children < 6	0.42		0.42		0.39		0.20	
With Children < 18	0.31		0.31		0.28		0.13	
Married Couple Families	0.33		0.33		0.32		0.11	
Female Head, No Spouse	1.04		1.04		0.90		0.51	
Male Head, No Spouse	1.90		1.90		1.79		0.85	
Other Households with Child <sup>e</sup>	4.25		4.25		2.90		3.04	
With No Children < 18	0.23		0.23		0.19		0.09	
More Than One Adult	0.25		0.25		0.22		0.10	
Women Living Alone	0.34		0.34		0.28		0.23	
Men Living Alone	0.57		0.57		0.35		0.33	
Households With Elderly	0.34		0.34		0.26		0.15	
Elderly Living Alone	0.42		0.42		0.28		0.31	
<b>Race and Hispanic Ethnicity</b>								
White, Non-Hispanic	0.18		0.18		0.16		0.07	
Black, Non-Hispanic	0.82		0.82		0.72		0.29	
Hispanic <sup>f</sup>	0.65		0.65		0.53		0.26	
Other Non-Hispanic	1.03		1.03		0.78		0.52	
<b>Household Income-to-Poverty Ratio</b>								
Under 1.00	1.09		1.09		0.88		0.48	
Under 1.30	0.56		0.56		0.49		0.31	
Under 1.85	0.52		0.52		0.47		0.22	
1.85 and Over	0.19		0.19		0.16		0.06	
Income Unknown	0.58		0.58		0.41		0.25	
<b>Area of Residence<sup>g</sup></b>								
Inside Metropolitan Area	0.21		0.21		0.17		0.09	
In Central City	0.39		0.39		0.37		0.18	
Not In Central City	0.26		0.26		0.23		0.14	
Outside Metropolitan Area	0.34		0.34		0.28		0.16	
<b>Census Geographic Region</b>								
Northeast	0.44		0.44		0.36		0.14	
Midwest	0.47		0.47		0.42		0.17	
South	0.35		0.35		0.25		0.14	
West	0.19		0.19		0.21		0.09	

Source: Tabulations of Current Population Survey, Food Security Supplement data.

a,d,e,f,g -- See End Notes

## END NOTES TO TABLES A.1 –D.C.4

- a. Using CPS person weights for adults.
- b. Using CPS person weights for children.
- c. Using CPS person weights for adults and children.
- d. Adjusted for screening differences so all years 1995-1999 are comparable.
- e. Households with children in complex living arrangements, e.g., children of other relatives or unrelated roommate or border.
- f. Hispanics may be of any race.
- g. Subtotals do not add to metropolitan totals because central city residence is not identified for some areas.
- h. Only asked in households with children.
- i. The actual wording of each item includes explicit reference to resource limitation, e.g., “because (I was/we were running out of money to buy food,” or “because there wasn’t enough money for food.”
- j. Based on data as collected; not adjusted for comparability to 1995-1997.
- k. P-values not calculated.

## REFERENCES

- Anderson S., (ed.). "Core indicators of nutritional state for difficult-to-sample populations." A report prepared by the Life Sciences Research Office, Federation of American Societies for Experimental Biology for the American Institute of Nutrition under Cooperative Agreement No. HPU 880004-01-0, Nutritional Status Indicators of Low-Income Populations, with the Office of Disease Prevention and Health Promotion, Department of Health and Human Services. *Journal of Nutrition*, 120 (11S): 1557-1600, 1990.
- Andrews, M., Nord, M., Bickel, G., and Carlson, S. "Household Food Security in the United States, 1999, Advance Report." Washington, DC: Economic Research Service, U.S. Department of Agriculture, 2000.
- Andrich, D. "Rasch Models for Measurement." Newbury Park, CA: Sage Publications, 1988.
- Bickel, G., Carlson, S. and Nord, M. "Household Food Security in the United States, 1995-1998, Advance Report." Alexandria, VA: Office of Analysis, Nutrition and Evaluation, Food and Nutrition Service, U.S. Department of Agriculture, 1999.
- BILOG 3, 2<sup>nd</sup> Edition. Chicago, IL: Scientific Software, Inc. 1990.
- Campbell, C.C. "Food insecurity: a nutritional outcome or a predictor variable?" *Journal of Nutrition*. Mar; 121(3): 408-15. 1991.
- Cohen, B., Lerner, R., and Parry, J. "Household Food Security in the United States, 1998 and 1999: Technical Report." Food Assistance and Nutrition Research Report. Washington, DC: Economic Research Service, U.S. Department of Agriculture, 2002.
- Cohen, B., and Burt M. "Eliminating hunger: food security policy for the 1990s." Washington, D.C.: The Urban Institute, 1989.
- Hamilton W., Cook J., Thompson W., Buron L., Frongillo E., Olson C., and Wehler C. "Household food security in the United States in 1995, Summary Report of the Food Security Measurement Project." Alexandria, VA: Food and Consumer Service, U.S. Department of Agriculture, July 1997.
- Nord, M., and G. Bickel. "Estimating the Prevalence of Children's Hunger from the Current Population Survey Food Security Supplement: Second Food Security Measurement and research Conference, Volume II: Papers." Food Assistance and Nutrition Research Report 11-2, pp 31-49. Margaret Andrews and Mark Prell (eds.) Economic Research Service, U.S. Department of Agriculture, 2001.

Nord, M., and G. Bickel. "Measuring the Food Security of Children in U.S. Households, 1995-1999," Food Assistance and Nutrition Research Report No. 25. Washington, DC: Economic Research Service, U.S. Department of Agriculture, 2002.

Nord, M., K. Jemison, and G. Bickel. "Prevalence of Food Insecurity and Hunger, by State, 1996-1998." Washington, DC: Economic Research Service, U.S. Department of Agriculture, 1999.

Ohls, J., Radbill, L., and Schirm, L. "Household Food Security in the United States, 1995-1997: Technical Issues and Statistical Report" Alexandria, VA: Food and Consumer Service, U.S. Department of Agriculture, December, 2001.

Radimer, K.L., C.M. Olson, J.C. Greene, C.C. Campbell and J.P. Habicht, "Understanding Hunger and Developing Indicators To Assess it in Women and Children." *Journal of Nutrition Education* 24 (1):36S-44S, 1992.

Wehler, C.A., R.I. Scott, and J.J. Anderson, "The Community Childhood Hunger Identification Project: A Model of Domestic Hunger – Demonstration Project in Seattle, Washington." *Journal of Nutrition Education* 24 (1):29S-35S, 1992.