

DatelineERS

New ERS research and analysis at: www.ers.usda.gov

Economic Research Service

October 2008

U.S. Department of Agriculture

ERS is the main source of research and analysis from the U.S. Department of Agriculture, providing timely information on economic and policy issues related to agriculture, food, the environment, and rural America.



Commodity Markets and Trade

ERS Outlook reports provide timely analysis of major commodity markets and trade.

This Month

- Vegetables and Melons
- Fruit and Tree Nuts Yearbook
- Cotton and Wool
- Livestock, Dairy and Poultry
- Wheat
- Feed
- Rice
- Oil Crops

All reports along with a calendar of future releases are available at:

www.ers.usda.gov/publications/outlook

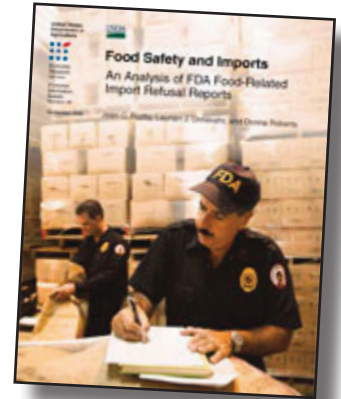
An Analysis of FDA Import Refusal Reports

www.ers.usda.gov/Publications/EIB39

Interest in the safety of imported foods has increased over time, not only because the volume of food imports is increasing in the United States, but because the imported share of the total U.S. food consumption is also rising, particularly for perishable, minimally processed foods. *Food Safety and Imports: An Analysis of FDA Import Refusal Reports* identifies recurring food safety risks and other problems (e.g., inadequate labeling) in certain types of imported foods. The top imported food categories refused due to food safety and other violations under FDA law were:

- Vegetables and vegetable products (20.6 percent of total violations)
- Fishery and seafood products (20.1 percent)
- Fruits and fruit products (11.7 percent)

An examination of violations in these three categories reveals that refusals for sanitary violations in seafood and fruit products, pesticide violations in vegetables, and unregistered processes for canned food products in all three categories were persistent over time.



Integrating Invasive Species Prevention and Control Policies

www.ers.usda.gov/publications/eb11

Invasive species have been associated with billions of dollars in economic and environmental losses in the United States, including yield and quality losses for farmers and ranchers. Invasive species clog and foul waterways, impair the productivity of pastures, reduce property values and environmental

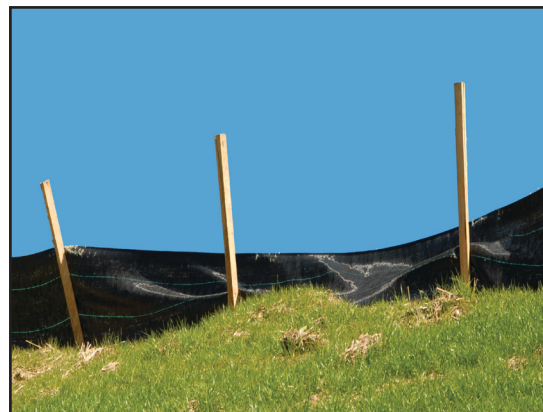
amenities associated with parks and natural ecosystems, and threaten the survival of indigenous wildlife. Moreover, some invasive pathogens pose health risks to humans. *Integrating Invasive Species Prevention and Control Policies* finds that Programs and policies to minimize the threat of, or mitigate the damages from, invasive species work best if designed in concert with each other.



Economic Measures of Soil Conservation Benefits

www.ers.usda.gov/Publications/TB1922

Annual conservation program expenditures have doubled to more than \$5 billion per year over the last decade. A major focus of these programs is on reducing soil erosion. The environmental benefits of decreasing soil erosion are not easy to measure. Conservation programs best serve the public when their funding, design, and implementation maximize benefits relative to costs. *Economic Measures of Soil Conservation Benefits: Regional Values for Policy Assessment* describes data and methodologies that the Economic Research Service has used to apply monetary values to changes in soil erosion.



**NEW
Podcast!**



Economic Impacts of BSE Feed-Related Policy Podcast

www.ers.usda.gov/Podcast

Animal and poultry disease outbreaks like Mad Cow Disease (BSE) often lead to new or amended policies and regulations. The economic effects induced by these policies can be much greater and much longer lasting than the immediate effect of the disease outbreak alone.

This podcast highlights the recently released ERS report: *Economic Impacts of Feed-Related Regulatory Responses to Bovine Spongiform Encephalopathy*. The report demonstrates the pervasiveness of the effects of restrictive feed policies and regulations, particularly as they relate to meat and bone meal and other protein feeds. (3 minutes)

USDA's 85th Agricultural Outlook Forum Global Agriculture & Rural America in Transition Food & Energy: Expectations & Realities

February 26-27, 2009

Crystal Gateway Marriott Hotel
Arlington, Virginia



Join us for USDA's annual Forum as the Secretary of Agriculture and government, farm, and industry leaders discuss the future of American agriculture. The 2-day conference rate is \$350 if booked and paid by January 23, 2009. Register for the Forum now: www.usda.gov/oce/forum/#register

[How to get more information...](#)

More information about the items featured in DatelineERS can be found on our Website: www.ers.usda.gov by going to the web address listed in each article. This newsletter is available online at: www.ers.usda.gov/news