

Potatoes

Export Value Up 2 Percent

During the 2008/09 marketing year (September-August), U.S. exports of all potatoes and potato products (including starch and dextrans) totaled \$1.19 billion—2 percent above a year earlier. Japan remained the top foreign market with 28 percent of the total, led by movement of frozen french fries, potato chips, and miscellaneous frozen products. Japan was followed by Canada (24 percent of export value), Mexico (11 percent), South Korea (5 percent), and Hong Kong (4 percent). Export volume was mixed, with reduced volume of frozen french fries, potato chips, and flakes/granules nearly offset by increased shipments of fresh potatoes, seed, and other potato products. With the exception of fresh potatoes and canned/prepared potatoes, the average export unit value (price) was up for all export product classes including french fries (up 6 percent), flakes (up 6 percent), and chips (up 5 percent). The volume of fresh-market potato exports was up 6 percent from a year earlier, while the average value per pound was down about 2 percent, leaving the value of fresh exports above a year earlier.

In terms of value, the United States remained a net potato exporter. During the September-August marketing year, U.S. imports of all potatoes and potato products totaled \$1.026 billion—7 percent above a year earlier. Canada remained the top foreign supplier with 86 percent of the total, followed distantly by Mexico (6 percent), the Netherlands (3 percent), and Germany (2 percent). While Mexico largely supplies prepared/preserved (canned) products and some chips, starches and other dehydrated products account for the bulk of imports from Germany and the Netherlands.

Table 12—U.S. potatoes: Marketing year trade value to-date, 2005/06-08/09 1/

Item	September - August				Change 2007-08
	2005/06	2006/07	2007/08	2008/09	
----- 1,000 dollars ----- Percent					
Exports					
Fresh-market	132.3	117.8	144.4	149.4	3
Seed	5.4	6.0	6.2	10.8	73
Frozen fries	438.4	522.3	624.0	636.4	2
Other frozen	40.6	39.3	60.6	67.0	11
Chips	173.3	173.6	189.8	181.8	-4
Flakes/granules	63.1	84.6	68.8	62.9	-9
Canned/prep	40.9	44.0	43.9	49.7	13
Flour, meal, dried	8.2	15.2	18.1	21.7	20
Starch & dextrans	9.5	10.9	12.1	13.8	14
Total	911.6	1,013.8	1,167.7	1,193.3	2
Imports					
Fresh-market	94.2	104.4	133.7	144.5	8
Seed	22.6	21.1	13.1	19.5	49
Frozen fries	490.8	550.2	586.8	598.3	2
Other frozen	50.0	49.2	53.6	60.7	13
Chips	98.9	87.6	43.8	49.2	12
Flakes/granules	6.6	8.6	13.9	25.2	80
Canned/prep	8.3	7.7	30.5	58.9	93
Flour, meal, dried	2.3	2.3	4.5	2.7	-40
Starch & dextrans	56.4	66.4	78.2	67.1	-14
Total	830.1	897.6	958.2	1,026.2	7

1/ Based on a marketing year that runs September through August.

Source: Prepared by ERS using data from U.S. Department of Commerce, U.S. Census Bureau.

Table 13—U.S. potatoes: Marketing year export value by country, 2005/06-08/09 1/

Item	September - August				Change 2007-08
	2005/06	2006/07	2007/08	2008/09	
	----- 1,000 dollars -----				Percent
Japan	243.0	260.7	297.0	332.2	12
Canada	211.8	233.8	276.1	281.6	2
Mexico	177.0	169.7	148.3	133.2	-10
South Korea	33.5	37.6	54.6	54.0	-1
Hong Kong	25.5	27.3	36.6	53.6	46
Taiwan	35.8	37.1	40.9	41.1	0
Others	184.9	247.7	314.3	297.5	-5
World	911.6	1,013.8	1,167.7	1,193.3	2

1/ Based on a marketing year that runs September through August.

Source: Prepared by ERS using data from U.S. Department of Commerce, U.S. Census Bureau.

Table 14—U.S. potatoes: Monthly grower and retail prices, 2008-09

Crop year & month	Grower prices			Retail prices	
	All uses	Fresh	Processing	Fresh	Chips
	----- Dollars/pound -----				
2008					
September	0.087	0.194	0.058	0.783	4.123
October	0.076	0.176	0.056	0.730	4.196
November	0.088	0.150	0.060	0.699	4.330
December	0.093	0.142	0.063	0.678	4.482
2009					
January	0.094	0.137	0.067	0.676	4.534
February	0.089	0.124	0.068	0.660	4.611
March	0.093	0.119	0.070	0.652	4.550
April	0.098	0.120	0.076	0.620	4.683
May	0.096	0.127	0.078	0.616	4.438
June	0.095	0.130	0.074	0.634	4.557
July	0.098	0.132	0.071	0.641	4.566
August	0.096	0.147	0.069	0.638	4.554
September 1/	0.077	--	--	0.612	4.627
Percent change year ago Sept.	-11.6	--	--	-21.8	12.2

-- = not available. 1/ Grower prices for September 2009 are mid-month averages.

Source: USDA, National Agricultural Statistics Service, *Agricultural Prices* and U.S. Dept. of Labor, Bureau of Labor Statistics (retail).

Utilization of the 2008 Crop

Significantly decreased U.S. potato production in 2008 (down nearly 7 percent from 2007) resulted in the smallest quantity of potatoes sold in a marketing year since 1991. Fresh utilization was down 1 percent from the 2007 crop to 109 million cwt—the lowest since 1988 and still well above the drought-affected 1980 record low of 97 million cwt. Table stock utilization has declined 22 percent since reaching its most recent peak in 2000. A combination of factors has likely cut into fresh potato utilization this decade including;

- changes in diet (such as low-carb diets and meat-free meals);
- increased competition from alternative side dishes such as rice, pasta, and sweet potatoes (the battle for share of stomach both at home and away from home);

Table 15—Potatoes: U.S. crop utilization, by product, crop years 2004-08 1/

Item	2004	2005	2006	2007	2008	Change
	<i>Million cwt</i>					<i>Percent</i>
Sales, all seasons	413.6	390.4	406.3	411.2	384.5	-6.5
Table stock	123.8	113.6	113.3	110.9	109.4	-1.4
Processing	265.0	252.6	267.8	276.9	253.4	-8.5
Frozen french fries	134.8	126.5	126.1	139.6	134.4	-3.7
Other frozen	23.6	25.4	24.2	26.6	19.6	-26.4
Chips	51.3	52.4	64.4	54.3	50.7	-6.6
Dehydrated	49.7	43.4	48.8	49.0	40.7	-16.9
Canned	3.9	3.1	2.9	3.3	2.9	-10.8
Starch, flour, other	1.7	1.7	1.4	4.0	5.1	25.8
Other sales	24.8	24.2	25.2	23.5	21.7	-7.5
Seed	22.9	22.3	23.6	22.3	20.9	-6.3
Feed	1.9	1.9	1.6	1.2	0.8	-30.8
Non-sales	42.2	33.4	34.4	33.7	30.6	-9.2
Seed, feed, home	4.8	4.8	4.8	4.1	4.1	0.8
Loss and shrinkage	37.4	28.6	29.6	29.6	26.4	-10.6
Total production	455.8	423.8	440.7	444.9	415.1	-6.7

1/ Includes output from winter, spring, summer, and fall seasons.

Source: USDA, National Agricultural Statistics Service, *Potatoes*.

- the continuing demand for convenience in foods (e.g., using instant mashed potatoes or frozen fries instead of preparing from fresh); and
- the current recession (slowing food service demand).

Utilization for processing (including chips) fell 8 percent to 253 million cwt. Processing now stands 12 percent below the record high reached in 2000. Most processing subsectors reduced utilization in 2008/09, led by reductions in utilization for frozen products other than french fries (hash browns, home fries, potato rounds, etc.) and dehydration. Although down 4 percent, the production of frozen french fries remains the largest user of potatoes, with 35 percent of all sales volume. Dehydration use was down 17 percent, the largest year-over-year decline since the last recession in 2001. In general, high raw potato prices (as experienced this past season) tends to limit this sector's ability to compete on the open market. The nation's 82 potato chip manufacturing plants utilized 7 percent fewer potatoes than a year earlier. The market for chipping potatoes is a bit more specialized than other potato markets since most chip manufacturers require potato varieties grown specifically for chipping.

Per Capita Use Down in 2008

Per capita net domestic disappearance of potatoes for calendar year 2008 totaled 118.7 pounds (fresh-weight basis), down 5 percent from 2007. The decline in the domestic use of potatoes can be attributed to the impact of recession on demand (particularly in foodservice), increased exports, and reduced production in the fall of 2008. A 3-percent increase in imports of fresh and processed potatoes helped to partly offset a decline in domestic supplies and limit the decline in per capita use. Per capita disappearance of all potatoes was the lowest since 1983. Fresh use declined just 2 percent in 2008, while processing use dropped about 6 percent. The most substantial processing decline took place in the chip market. Domestic disappearance of potatoes for chips dropped 15 percent as domestic utilization for

chips fell, increased volume was directed into the export market, and import volume plummeted. Given unemployment approaching 10 percent, domestic per capita utilization is projected to decline slightly in 2009 despite an expected small increase in domestic production and lower prices this fall. Ultimately, the size of the potato crop and its effect on prices and potato product trade will help determine the extent of any drop in utilization over the coming year.

Although domestic use on a per-person basis has declined relatively steeply over the past 4 or 5 years, average domestic use (unadjusted for increases in population) this decade (2000-08) is up 7 percent from the average of a decade earlier. However, domestic producers have seen output rise just 3 percent over this time, with the remainder of domestic use satisfied by imports of potatoes and potato products, which are up 186 percent over this period. In 2008, imports (mostly table stock and frozen products) accounted for a record high 14 percent of domestic potato disappearance, compared with 8 percent in 1998 and 2 percent in 1988. Fresh market imports (mostly from Canada) now exceed 11 million cwt (1.1 billion pounds) annually and account for 10 percent of domestic use. About 34 million cwt (fresh-weight basis) of frozen french fries are imported annually (mostly from Canada), which is 22 percent of domestic use—double that of a decade earlier.

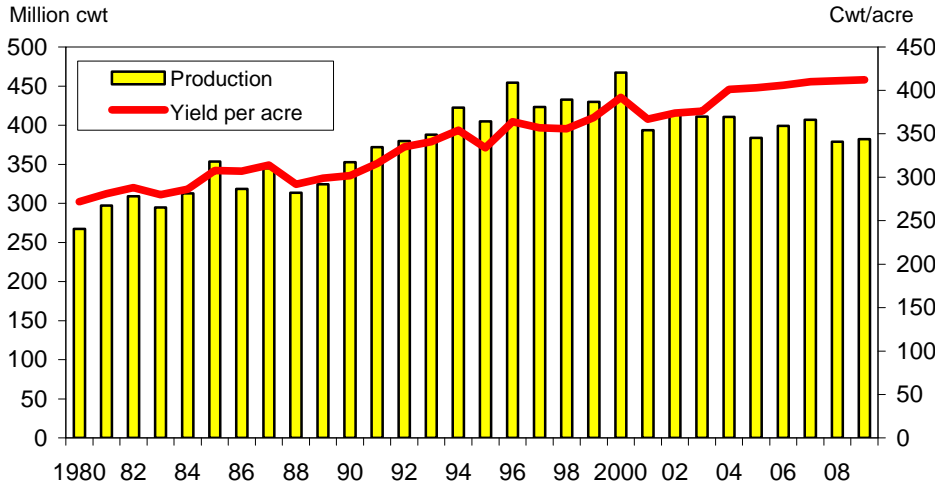
Table 16—Potatoes: Per capita disappearance (net domestic use) 1/

Product	Average					
	2000-04	2005	2006	2007	2008	2009 f
----- Pounds/person, fresh-weight -----						
Fresh	46.13	41.30	38.61	38.75	37.88	37.54
Processing	90.21	84.30	85.27	85.88	80.79	79.45
Freezing	57.09	54.38	53.30	53.23	51.59	50.64
Chipping	16.77	16.20	18.75	18.73	15.85	16.31
Dehydrating	14.90	12.79	12.45	13.04	12.40	11.69
Canning	1.45	0.93	0.77	0.88	0.95	0.81
Total	136.34	125.60	123.88	124.63	118.67	116.99

f = ERS forecast. 1/ Disappearance (use) is a proxy for calendar year consumption.

Source: Computed by USDA, Economic Research Service.

Figure 3
U.S. potatoes: Production and yield per acre 1/



1/ One cwt equals 100 pounds. 2009 projected by ERS.
 Source: USDA, National Agricultural Statistics Service, Potatoes.

Table P-1--Potatoes: Seasonal acreage, yield, production, price, and value, crop years 2000-09

Seasons	2000	2001	2002	2003	2004	2005	2006	2007r	2008r	2009p	Change
Area planted											
	-- 1,000 acres --										Percent
Winter	17.2	16.8	15.8	14.6	18.7	20.0	17.7	10.5	11.0	9.0	-18.2
Spring	77.4	78.3	87.8	88.6	76.5	68.0	70.7	72.8	70.3	75.6	7.5
Summer	65.4	60.5	61.9	63.4	58.4	53.4	55.3	50.8	47.2	43.9	-7.0
Fall	1,223.1	1,091.3	1,134.1	1,106.0	1,039.7	967.7	995.7	1,007.8	931.1	932.9	0.2
Idaho	415.0	350.0	375.0	360.0	355.0	325.0	335.0	350.0	305.0	320.0	4.9
Washington	175.0	160.0	162.0	163.0	160.0	154.0	156.0	160.0	155.0	145.0	-6.5
All seasons	1,383.1	1,246.9	1,299.6	1,272.6	1,193.3	1,109.1	1,139.4	1,141.9	1,059.6	1,061.4	0.2
Area harvested											
Winter	17.0	14.0	15.7	14.3	18.5	19.8	17.5	10.5	11.0	8.7	-20.9
Spring	75.6	76.2	86.1	84.7	72.2	66.7	67.5	70.2	68.8	73.4	6.7
Summer	62.6	58.2	58.9	58.7	53.9	51.4	51.2	48.3	45.1	42.5	-5.8
Fall	1,192.3	1,072.5	1,105.2	1,090.9	1,022.3	949.0	984.0	993.2	922.0	922.7	0.1
Idaho	413.0	348.0	373.0	358.0	353.0	323.0	334.0	349.0	304.0	319.0	4.9
Washington	175.0	160.0	162.0	162.0	159.0	154.0	155.0	160.0	155.0	145.0	-6.5
All seasons	1,347.5	1,220.9	1,265.9	1,248.6	1,166.9	1,086.9	1,120.2	1,122.2	1,046.9	1,047.3	0.0
Yield per acre											
	-- Cwt --										
Winter	292	294	268	282	260	247	257	215	230	245	6.5
Spring	290	286	261	288	314	281	293	282	293	291	-0.7
Summer	306	311	304	320	340	342	337	331	306	346	13.1
Fall	392	367	374	376	401	403	406	410	411	411	0.0
Idaho	369	345	358	344	374	366	386	373	383	386	0.9
Washington	600	590	570	575	590	620	580	630	600	610	1.7
Average yield	381	358	362	367	391	390	393	396	396	399	0.7
Production											
	-- 1,000 cwt --										
Winter 2/	4,960	4,115	4,206	4,027	4,818	4,892	4,495	2,258	2,530	2,132	-15.7
Spring	21,921	21,814	22,452	24,433	22,663	18,724	19,766	19,820	20,132	21,325	5.9
Summer	19,134	18,113	17,932	18,766	18,307	17,567	17,261	15,997	13,805	14,705	6.5
Fall	467,529	393,631	413,581	410,588	410,253	382,743	399,176	406,800	378,588	379,414	0.2
Idaho	152,320	120,200	133,385	123,180	131,970	118,288	128,915	130,010	116,475	123,262	5.8
Washington	105,000	94,400	92,340	93,150	93,810	95,480	89,900	100,800	93,000	88,450	-4.9
All seasons	513,544	437,673	458,171	457,814	456,041	423,926	440,698	444,875	415,055	417,576	0.6
Prices											
	-- Dollars per cwt --										
Winter	17.04	22.22	26.21	26.04	22.37	21.47	24.88	18.50	20.00		
Spring	9.57	9.86	13.28	10.90	10.04	11.29	12.32	14.23	14.96		
Summer	9.00	9.25	10.78	8.72	8.07	9.71	10.76	9.17	14.52		
Fall	4.55	6.54	5.89	5.23	5.08	6.53	6.67	7.04	8.90		
Idaho	4.00	6.15	5.00	4.40	4.25	5.70	5.90	6.15	7.10		
Washington	4.25	5.85	5.55	5.25	4.90	5.60	6.25	6.70	7.95		
Average 1/	5.08	6.99	6.67	5.89	5.66	7.06	7.31	7.51	8.42		
Fresh-market	5.27	10.79	9.59	7.32	6.76	10.36	10.27	10.84	14.44		
Processing	4.70	5.05	5.16	5.10	5.06	5.39	5.90	6.01	6.49		
Value of production											
	-- Million dollars --										
Winter	84.5	91.1	110.2	104.9	107.8	104.7	111.2	41.8	50.6		
Spring	210.2	216.2	302.5	267.1	229.5	211.9	243.1	279.5	301.2		
Summer	173.0	167.8	192.8	164.2	147.4	170.3	185.4	146.7	198.1		
Fall	2,122.3	2,580.7	2,439.8	2,149.6	2,090.1	2,504.6	2,669.0	2,871.7	3,220.6		
Idaho	609.3	739.2	666.9	542.0	560.9	674.2	760.6	799.6	832.8		
Washington	446.3	552.2	512.5	489.0	459.7	534.7	561.9	675.4	692.9		
All seasons	2,608.8	3,059.3	3,056.0	2,696.5	2,581.2	2,991.5	3,208.6	3,339.7	3,770.5		

r = revised. p = ERS projected estimates in italics.

1/ Marketing year average price received by growers. Monthly prices are in Price table 9 in Vegetable Prices of Data Tables (online).

The usual time of harvest for each season is: Winter--Jan to Mar; Spring--Apr to Jun; Summer--Jul to mid-Sep; and Fall--Sep to Nov.

2/ 2007 winter production number does not include Florida.

Sources: USDA, NASS, Crop Production; Crop Values; Agricultural Prices; Potatoes Summary.

Table P-2--Potatoes: Production sold and value of sales, 2000-08

Item	2000	2001	2002	2003	2004	2005	2006	2007	2008	Change
Production sold 1/										
	--- 1,000 cwt ---									
Winter 3/	4,688	3,967	4,145	3,964	4,755	4,703	4,362	2,145	2,475	15.4%
Spring	21,314	20,867	21,367	23,242	21,603	17,833	18,938	19,000	19,132	0.7%
Summer	18,269	17,414	17,336	18,016	17,698	16,997	17,595	15,447	13,291	-14.0%
Fall crop	420,301	358,812	378,796	371,755	369,781	351,083	365,863	374,617	349,580	-6.7%
Idaho	137,412	110,709	123,295	112,817	119,818	109,258	119,527	120,365	108,417	-9.9%
Washington	95,200	87,100	85,540	87,270	87,970	89,240	84,160	94,164	87,290	-7.3%
All seasons:	464,572	401,060	421,644	416,977	413,837	390,616	406,758	413,609	384,478	-7.0%
Growth	6.3%	-13.7%	5.1%	-1.1%	-0.8%	-5.6%	4.1%	1.7%	-7.0%	
Value of sales 2/										
	--- Million dollars ---									
Winter	79.9	88.2	108.7	103.2	106.4	101.0	108.6	39.7	49.4	24.3%
Spring	203.9	205.7	283.8	253.3	216.9	201.4	233.3	270.4	286.4	5.9%
Summer	164.4	161.1	187.0	157.1	142.9	165.1	194.5	141.7	190.6	34.5%
Fall crop	1,911.0	2,348.0	2,232.6	1,944.0	1,877.9	2,290.9	2,442.5	2,636.9	2,967.9	12.6%
Idaho	549.6	680.9	616.5	496.4	509.2	622.8	705.2	738.8	773.3	4.7%
Washington	404.6	509.5	474.7	458.2	431.1	499.7	526.0	630.6	650.6	3.2%
All seasons:	2,359.2	2,803.0	2,812.0	2,457.6	2,344.1	2,758.3	2,978.9	3,088.8	3,494.2	13.1%

r= revised. f = ERS projection. Projections (italics) are based on the share of total production sold in the preceding year.

1/ Production minus own-farm uses for seed, feed, food, shrink, and loss. See Table P-7 for production sold by use.

2/ Farm receipts equal production sold multiplied by corresponding price per cwt in Table P-1. Projected value sold is based on value of production. 3/ FL values added to spring totals instead of winter totals.

Sources: USDA, NASS: Potatoes Summary; Crop Production; Crop Values.

Table P-3--Potatoes: Prices received in major producing States, monthly 2007-09

States	Crop year 1/	Sep	Oct	Nov	Dec	Jan	Feb	Mar	Apr	May	Jun	Jul	Aug	Crop year
-- Dollars per cwt --														
All seasons 2/														
California, all 3/	2007/08	8.15	7.30	6.65	7.85	14.70	17.50	16.60	11.10	11.80	13.80	15.90	21.10	11.00
	2008/09	19.80	7.65	6.95	14.10	17.10	16.50	21.60	9.90	12.50	13.20	15.50	---	14.00
	2009/10	---	---	---	---	---	---	---	---	---	---	---	---	---
Winter	2007/08	---	---	---	16.40	18.30	21.70	24.00	27.60	---	---	---	---	18.50
	2008/09	---	---	23.50	23.20	22.10	24.30	34.70	14.80	---	---	---	---	20.00
Spring	2007/08	---	---	---	---	---	---	---	---	12.70	14.30	15.50	---	10.10
	2008/09	---	---	---	---	---	---	---	---	13.50	13.70	14.00	---	14.20
Summer	2007/08	10.30	9.50	---	---	---	---	---	---	---	---	17.80	21.10	10.80
	2008/09	19.80	19.70	---	---	---	---	---	---	---	---	---	---	19.90
Fall	2007/08	6.25	6.30	6.65	6.90	7.00	7.40	7.05	7.10	8.15	10.20	14.90	---	7.70
	2008/09	---	6.95	6.95	6.95	9.25	8.60	13.90	8.05	7.80	7.45	7.65	---	7.55
Colorado, all	2007/08	7.65	7.45	7.75	8.35	9.00	9.70	10.20	9.90	10.90	13.40	16.10	21.30	9.75
	2008/09	20.50	19.10	14.80	14.40	13.20	10.50	10.40	9.80	7.80	7.55	7.50	8.10	11.80
	2009/10	7.45	---	---	---	---	---	---	---	---	---	---	---	---
Fresh	2007/08	8.25	8.40	8.50	9.05	9.90	10.80	11.00	11.20	14.00	18.20	18.60	22.20	11.10
	2008/09	22.60	24.90	18.00	16.30	14.20	12.10	11.00	9.70	8.65	8.60	8.55	9.50	13.30
Florida	2007/08	---	---	---	---	---	18.80	21.50	18.00	16.40	12.30	---	---	20.90
	2008/09	---	---	---	---	---	22.10	24.10	19.80	16.50	12.90	---	---	16.50
Idaho, all	2007/08	5.25	5.25	5.50	5.50	5.70	5.60	6.40	6.75	6.40	7.45	8.50	11.20	6.15
	2008/09	7.10	6.65	7.00	6.85	6.95	6.75	8.05	8.50	7.50	6.25	6.15	7.85	7.15
	2009/10	6.75	---	---	---	---	---	---	---	---	---	---	---	---
Fresh	2007/08	6.00	5.80	6.40	6.20	6.70	6.00	6.10	6.00	6.70	11.00	12.10	19.00	7.40
	2008/09	15.10	11.90	10.60	8.90	8.60	7.70	7.10	6.90	6.90	6.30	5.60	8.00	8.50
Processing	2007/08	5.10	5.10	5.10	5.20	5.20	5.40	5.50	5.60	5.70	5.90	5.80	6.00	5.40
	2008/09	5.60	5.50	5.60	5.70	6.10	6.20	6.20	6.40	6.60	6.20	6.50	7.60	6.00
Maine	2007/08	6.20	6.40	7.25	7.55	7.60	8.00	8.55	8.65	9.15	8.75	8.55	---	7.90
	2008/09	7.80	8.65	10.20	9.95	9.85	10.30	11.10	10.70	9.55	9.00	---	---	9.75
Michigan	2007/08	6.45	6.45	8.15	8.40	8.55	9.20	9.90	10.40	10.70	10.10	17.30	9.25	8.45
	2008/09	8.85	10.30	9.80	10.20	10.20	10.20	10.00	11.40	11.80	---	10.40	8.95	10.10
	2009/10	9.00	---	---	---	---	---	---	---	---	---	---	---	---
Minnesota	2007/08	5.95	6.35	6.35	6.50	6.10	6.35	6.10	5.90	5.70	5.20	5.05	12.30	6.10
	2008/09	10.10	8.20	9.35	9.35	7.40	6.95	6.70	7.20	7.05	6.10	6.80	10.90	8.25
New York	2007/08	12.00	11.20	11.80	11.40	11.50	11.60	11.60	12.30	12.40	---	---	21.10	11.80
	2008/09	16.50	16.60	15.60	15.80	14.80	13.70	14.80	15.80	15.80	---	---	14.90	16.20
	2009/10	13.50	---	---	---	---	---	---	---	---	---	---	---	---
North Dakota, all	2007/08	6.25	6.35	6.80	7.05	7.15	7.25	7.55	7.90	6.90	7.90	8.10	6.40	6.90
	2008/09	8.05	8.10	9.50	8.60	8.90	9.10	8.05	8.70	8.65	8.05	8.15	---	8.30
	2009/10	9.00	---	---	---	---	---	---	---	---	---	---	---	---
Fresh	2007/08	8.25	8.25	8.40	8.40	8.95	9.60	10.50	9.60	8.85	8.25	---	---	8.70
	2008/09	17.20	15.70	15.60	15.30	14.70	13.90	12.40	11.20	10.00	8.70	7.90	---	14.90
Processing	2007/08	5.85	5.90	6.10	6.50	6.35	6.45	6.60	6.50	6.30	7.90	8.10	6.35	6.40
	2008/09	6.45	6.25	6.50	5.90	6.55	7.20	6.40	7.45	8.20	7.85	8.15	---	6.80
Oregon	2007/08	5.30	5.50	6.60	7.85	7.95	7.85	8.10	8.20	9.15	12.40	12.30	8.55	7.75
	2008/09	8.90	7.20	11.80	11.90	10.70	9.20	9.15	9.35	8.80	8.50	7.40	7.15	8.80
	2009/10	7.25	---	---	---	---	---	---	---	---	---	---	---	---
Texas	2007/08	9.90	---	---	---	---	---	---	23.70	17.50	17.10	18.90	18.70	11.70
	2008/09	---	---	---	---	---	---	---	---	24.70	18.80	28.40	29.40	18.50
	2009/10	29.90	---	---	---	---	---	---	---	---	---	---	---	---
Washington, all	2007/08	5.30	5.35	5.95	7.20	7.65	8.15	7.75	7.35	8.55	10.90	10.60	8.45	6.70
	2008/09	8.10	6.00	6.90	7.55	8.80	8.70	8.35	8.15	7.70	8.10	8.10	7.85	7.45
	2009/10	6.75	---	---	---	---	---	---	---	---	---	---	---	---
Processing	2007/08	4.90	5.20	5.20	6.15	6.35	6.50	6.50	6.15	6.70	6.80	6.80	5.25	5.65
	2008/09	5.15	5.25	5.50	5.55	6.05	6.55	6.90	7.05	7.00	7.15	6.95	6.65	5.85
Wisconsin, all	2007/08	6.30	6.85	7.45	7.90	8.35	8.35	7.85	9.35	9.20	8.90	19.40	15.30	7.80
	2008/09	10.30	10.30	10.20	12.10	11.90	11.20	10.90	11.30	9.85	9.60	---	8.95	11.30
	2009/10	8.65	---	---	---	---	---	---	---	---	---	---	---	---
Fresh	2007/08	7.15	8.10	8.54	8.25	8.55	8.70	9.80	9.60	10.80	10.80	20.60	21.60	8.70
	2008/09	16.90	14.80	15.10	15.70	14.50	13.50	12.00	9.95	9.55	---	---	8.65	14.90
Processing	2007/08	5.95	5.75	6.20	7.20	7.95	7.85	6.15	9.65	8.00	8.00	7.50	5.95	6.90
	2008/09	6.05	6.25	6.45	8.15	9.00	9.25	9.70	10.10	9.80	---	---	9.40	7.95
United States, all	2007/08	5.79	5.67	6.47	7.21	7.50	7.76	7.87	8.45	9.23	10.37	10.98	10.71	7.51
	2008/09	8.65	7.60	8.77	9.30	9.40	8.87	9.27	9.81	9.62	9.48	9.81	9.61	8.42
	2009/10	7.65	---	---	---	---	---	---	---	---	---	---	---	---
Fresh 4/	2007/08	7.85	7.68	8.11	8.97	9.67	10.30	10.25	11.77	14.56	18.03	18.00	23.66	10.84
	2008/09	19.39	17.59	14.97	14.19	13.70	12.36	11.89	11.98	12.70	13.00	13.20	14.66	14.44
Processing	2007/08	5.34	5.29	5.62	6.14	6.20	6.34	6.25	6.58	6.72	6.85	6.72	5.75	6.01
	2008/09	5.75	5.61	6.01	6.31	6.68	6.84	7.02	7.61	7.82	7.42	7.10	6.93	6.49
Producer prices														
1982=100														
Frozen fries 5/	2007/08	164.0	167.4	169.1	171.4	170.7	171.7	172.4	173.2	173.4	173.2	173.6	177.3	171.5
	2008/09 p	179.5	194.9	196.3	208.3	205.4	210.3	210.6	208.3	208.3	209.7	208.1	208.9	204.1
	2009/10 p	209.4	---	---	---	---	---	---	---	---	---	---	---	---
Potato chips 6/	2007/08	157.3	157.6	159.3	159.2	162.7	164.1	164.9	164.7	173.8	173.8	184.6	184.9	167.2
	2008/09 p	188.6	189.5	192.2	192.6	193.2	194.0	192.9	196.0	196.5	197.4	196.8	196.8	193.9
	2009/10 p	196.9	---	---	---	---	---	---	---	---	---	---	---	---

--- = not available or not enough shipments. p = preliminary.

1/ Crop year: September--August.

2/ Marketing seasons: Winter--November to May; Spring--April to August; Summer--June to December; Fall--July to July
Fall crop prices may overlap with spring and summer crop prices.

3/ Average price of potatoes sold for all uses, regardless of harvest year; most recent prices are preliminary

4/ Consumer prices are in Price table 5 in Vegetable Prices of Data Tables (online). 5/ Series ID WPU02450201.

6/ Includes corn chips, etc.; Dec.1985=100; Series ID WPU02890172

Source: USDA, NASS, Agricultural Prices; Potatoes Summary; www.BLS.gov.

Table P-4--Potatoes: Domestic shipments by use, monthly 2004-09

Crop Year 1/	Sep.	Oct.	Nov.	Dec.	Jan.	Feb.	Mar.	Apr.	May	Jun.	Jul.	Aug.	Annual
MONTHLY SHIPMENTS: 2/													annualized
-- 1,000 cwt --													
Tablestock													
2004/05	8,767	9,247	9,414	9,413	9,006	8,075	9,838	8,443	9,577	9,255	7,833	8,006	106,874
2005/06	8,469	8,742	9,317	9,158	8,952	7,951	9,551	8,831	9,495	9,391	8,030	7,955	105,842
2006/07	8,277	8,169	9,398	8,984	9,161	8,071	9,242	8,478	9,330	9,115	7,974	8,438	104,636
2007/08	8,015	8,815	9,453	9,379	9,364	8,522	9,622	8,486	9,785	8,512	7,478	7,614	105,044
2008/09	8,254	8,195	9,175	8,868	8,448	6,956	8,314	8,036	8,299	8,687	8,039	8,187	99,458
2009/10	7,893												
Change	3.0%	-7.0%	-2.9%	-5.4%	-9.8%	-18.4%	-13.6%	-5.3%	-15.2%	-6.6%	-6.2%	-9.8%	
Idaho 3/													
2005/06	2,197	2,564	2,798	2,624	2,513	2,593	2,923	2,578	2,715	2,695	2,453	2,434	31,087
2006/07	2,335	2,669	2,749	2,575	2,728	2,465	2,588	2,659	2,718	2,616	2,616	2,505	31,225
2007/08	2,345	2,793	2,849	2,502	2,703	2,544	2,653	2,748	2,615	2,602	2,749	1,785	30,889
2008/09	1,970	2,480	2,461	2,754	2,829	2,565	2,872	2,808	2,470	2,761	2,773	2,251	30,993
2009/10	2,370												
Chipper													
2004/05	3,129	3,920	3,388	3,636	4,332	3,170	3,426	4,765	4,177	3,556	5,078	3,660	46,237
2005/06	3,673	4,472	3,442	4,786	3,605	2,918	3,478	4,831	4,059	3,597	4,784	3,747	47,391
2006/07	4,111	3,572	3,608	5,093	3,669	3,170	4,273	3,755	3,903	4,962	3,266	3,139	46,522
2007/08	4,692	3,699	3,454	4,738	3,307	3,149	3,975	3,633	4,638	3,927	3,327	4,513	47,052
2008/09	3,508	3,659	4,363	3,644	4,430	2,883	3,348	3,409	3,809	3,004	3,357	4,298	43,712
2009/10	3,156												
Seed													
2004/05	17	123	89	232	413	661	2,926	7,208	2,836	285	4	0	14,794
2005/06	3	76	158	341	522	646	2,319	7,637	2,904	47	4	0	14,657
2006/07	9	24	116	705	528	790	4,375	6,235	3,010	66	0	0	15,858
2007/08	50	89	77	318	511	658	3,603	6,075	3,701	73	0	0	15,156
2008/09	1	131	236	250	412	798	3,020	6,651	3,628	32	0	0	15,158
2009/10	50												
TOTAL													
2004/05	11,913	13,290	12,891	13,281	13,751	11,906	16,190	20,416	16,590	13,096	12,915	11,666	167,905
2005/06	12,145	13,290	12,917	14,285	13,079	11,515	15,348	21,299	16,458	13,035	12,817	11,702	167,890
2006/07	12,397	11,765	13,123	14,782	13,358	12,032	17,890	18,468	16,242	14,143	11,239	11,577	167,016
2007/08	12,757	12,603	12,984	14,435	13,182	12,328	17,201	18,194	18,123	12,512	10,806	12,127	167,252
2008/09	11,764	11,984	13,773	12,762	13,290	10,637	14,682	18,096	15,736	11,723	11,396	12,485	158,328
2009/10	11,098												
Change	-7.8%	-4.9%	6.1%	-11.6%	0.8%	-13.7%	-14.6%	-0.5%	-13.2%	-11.5%	-3.9%	4.7%	
YEAR-TO-DATE SHIPMENTS													
Tablestock													
2004/05	8,767	18,014	27,428	36,841	45,847	53,922	63,760	72,203	81,780	91,035	98,868	106,874	
2005/06	8,469	17,211	26,528	35,686	44,638	52,589	62,141	70,971	80,466	89,858	97,887	105,842	
2006/07	8,277	16,446	25,844	34,828	43,988	52,060	61,302	69,780	79,110	88,224	96,198	104,636	
2007/08	8,015	16,830	26,282	35,661	45,025	53,547	63,169	71,655	81,440	89,951	97,430	105,044	
2008/09	8,254	16,449	25,623	34,492	42,940	49,896	58,210	66,246	74,545	83,232	91,271	99,458	
2009/10	7,893												
Change	3.0%	-2.3%	-2.5%	-3.3%	-4.6%	-6.8%	-7.9%	-7.5%	-8.5%	2.0%	1.3%	0.4%	
Idaho 3/													
2005/06	2,197	4,761	7,559	10,183	12,696	15,289	18,212	20,790	23,505	26,200	28,654	31,087	
2006/07	2,335	5,005	7,754	10,329	13,057	15,522	18,111	20,769	23,487	26,104	28,720	31,225	
2007/08	2,345	5,138	7,987	10,489	13,192	15,736	18,389	21,137	23,752	26,354	29,104	30,889	
2008/09	1,970	4,450	6,911	9,665	12,494	15,059	17,930	20,738	23,208	25,969	28,742	30,993	
2009/10	2,370												
Chipper													
2004/05	3,129	7,049	10,437	14,073	18,405	21,575	25,001	29,766	33,943	37,499	42,577	46,237	
2005/06	3,673	8,145	11,587	16,373	19,978	22,896	26,374	31,205	35,264	38,861	43,644	47,391	
2006/07	4,111	7,683	11,291	16,384	20,053	23,223	27,497	31,252	35,155	40,117	43,383	46,522	
2007/08	4,692	8,392	11,846	16,584	19,892	23,040	27,015	30,647	35,285	39,212	42,539	47,052	
2008/09	3,508	7,167	11,530	15,174	19,604	22,487	25,835	29,244	33,053	36,057	39,414	43,712	
2009/10	3,156												
Seed													
2004/05	17	140	229	461	874	1,535	4,461	11,669	14,505	14,790	14,794	14,794	
2005/06	3	79	237	578	1,100	1,746	4,064	11,702	14,606	14,653	14,657	14,657	
2006/07	9	33	149	854	1,382	2,172	6,547	12,782	15,792	15,858	15,858	15,858	
2007/08	50	139	216	534	1,045	1,703	5,306	11,381	15,082	15,156	15,156	15,156	
2008/09	1	132	367	617	1,029	1,827	4,847	11,498	15,126	15,158	15,158	15,158	
2009/10	50												
TOTAL													
2004/05	11,913	25,203	38,094	51,375	65,126	77,032	93,222	113,638	130,228	143,324	156,239	167,905	
2005/06	12,145	25,435	38,352	52,637	65,716	77,231	92,579	113,878	130,336	143,371	156,189	167,890	
2006/07	12,397	24,162	37,284	52,066	65,424	77,455	95,346	113,814	130,056	144,199	155,438	167,016	
2007/08	12,757	25,361	38,345	52,780	65,962	78,290	95,490	113,684	131,807	144,319	155,125	167,252	
2008/09	11,764	23,748	37,521	50,283	63,572	74,209	88,892	106,988	122,724	134,447	145,843	158,328	
2009/10	11,098												
Change	-5.7%												

1/ Crop year for potatoes is September -- August of following year.

2/ Shipments include exports but exclude imports; transported by truck, rail, and piggyback from surveyed States.

New season crop is from current year; old season crop is from preceding year. 3/ Excludes chipper and seed potatoes.

Source: USDA, www.AMS.USDA.gov (Market News Portal).

Table P-5--Potatoes: Area, yield, and farm production, by season and major States, 2007-09

Seasons	AREA HARVESTED				YIELD				PRODUCTION				
	States	2007	2008	2009p	%chg	2007	2008	2009p	%chg	2007	2008	2009p	%chg
		-- 1,000 acres --				-- Cwt per acre --				--- 1,000 cwt ---			
Winter:													
California	10.5	11.0	8.7	-20.9	215	230	245	6.5	2,258	2,530	2,132	-15.7	
Total:	10.5	11.0	9.0	-18.2	215	230	240	4.3	2,258	2,530	2,160	-14.6	
Spring: 1/													
Arizona	4.0	3.5	4.0	14.3	280	300	280	-6.7	1,120	1,050	1,120	6.7	
California	15.5	15.4	17.5	13.6	395	450	430	-4.4	6,123	6,930	7,525	8.6	
Florida	27.2	27.9	28.6	2.5	287	285	274	-3.9	7,807	7,952	7,846	-1.3	
North Carolina	14.5	14.0	15.0	7.1	186	180	195	8.3	2,700	2,520	2,925	16.1	
Texas 6/	9.0	8.0	8.3	3.8	230	210	230	9.5	2,070	1,680	1,909	13.6	
Total: 6/	70.2	68.8	73.4	6.7	282	293	291	-0.7	19,820	20,132	21,325	5.9	
Summer:													
California	4.3	3.6	3.8	5.6	360	360	370	2.8	1,548	1,296	1,406	-16.3	
Colorado	2.7	4.4	3.9	-11.4	350	370	400	8.1	945	1,628	1,560	72.3	
Illinois	6.1	5.3	5.2	-1.9	400	395	390	-1.3	2,440	2,094	2,028	-14.2	
Kansas	4.9	4.8	4.8	0.0	365	320	325	1.6	1,789	1,536	1,560	-14.1	
Missouri	6.6	6.5	7.0	7.7	300	190	290	52.6	1,980	1,235	2,030	-37.6	
Texas	9.8	7.4	5.4	-27.0	395	395	460	16.5	3,871	2,923	2,484	-24.5	
Virginia	5.4	5.7	6.3	10.5	210	220	280	27.3	1,134	1,254	1,764	10.6	
Other States 2/	8.5	7.4	6.1	-17.6	269	249	307	23.6	2,290	1,839	1,873	-19.7	
Total:	48.3	45.1	42.5	-5.8	331	306	346	13.1	15,997	13,805	14,705	-13.7	
Fall:													
West:													
California	7.9	8.4	7.8	-7.1	480	470		-2.1	3,792	3,948		4.1	
Colorado	59.1	56.9	55.8	-1.9	355	385		8.5	20,981	21,907		4.4	
Idaho	349.0	304.0	319.0	4.9	373	383		2.7	130,010	116,475		-10.4	
Montana	11.2	10.5	10.8	2.9	330	330		0.0	3,696	3,465		-6.2	
Oregon	36.5	35.3	36.0	2.0	556	529		-4.9	20,293	18,676		-8.0	
Washington	160.0	155.0	145.0	-6.5	630	600		-4.8	100,800	93,000		-7.7	
Other States 3/	12.7	11.7	12.4	6.0	381	400		4.8	4,845	4,679		-3.4	
Total:	636.4	581.8	586.8	0.9	447	451		0.8	284,417	262,150		-7.8	
Central:													
Michigan	42.0	42.5	44.5	4.7	350	350		0.0	14,700	14,875		1.2	
Minnesota	49.0	48.0	45.0	-6.3	440	425		-3.4	21,560	20,400		-5.4	
Nebraska	19.8	19.4	19.6	1.0	415	425		2.4	8,217	8,245		0.3	
North Dakota	91.0	81.0	77.0	-4.9	260	280		7.7	23,660	22,680		-4.1	
Wisconsin	64.0	62.0	63.0	1.6	440	415		-5.7	28,160	25,730		-8.6	
Ohio	3.0	2.1	2.3	9.5	330	325		-1.4	990	683		-31.0	
Total:	268.8	255.0	251.4	-1.4	362	363		0.3	97,287	92,613		-4.8	
East:													
Maine	56.5	54.7	55.0	0.5	295	270		-8.5	16,668	14,769		-11.4	
New York	18.3	17.8	16.5	-7.3	285	320		12.3	5,216	5,696		9.2	
Pennsylvania	10.0	9.5	9.5	0.0	220	265		20.5	2,200	2,518		14.5	
Other States 4/	3.2	3.2	3.5	9.4	316	263		-16.8	1,012	842		-16.8	
Total:	88.0	85.2	84.5	-0.8	285	280		-1.9	25,096	23,825		-5.1	
Fall total:	993.2	922.0	922.7	0.1	410	411		0.2	406,800	378,588		-6.9	
Year:													
United States	1,122.2	1,046.9	1,047.6	0.1	396	396		0.0	444,875	415,055		-6.7	

p = preliminary.

1/ Includes Alabama. 2/ Alabama, Delaware, Maryland and New Jersey.

3/ Nevada and New Mexico. 4/ Massachusetts and Rhode Island.

5/ In 2007 winter potatoes combined with spring potatoes. 6/ 2007 revised.

Sources: USDA, NASS, Potatoes Summary; Crop Production.

Table P6--All U.S. potatoes: Farm marketings, percent of sales, 1999-2008 1/

Month	1999	2000	2001	2002	2003	2004	2005	2006	2007	2008
<i>Percent</i>										
Nov	--	--	0.1	0.1	0.1	--	--	0.1	0.1	--
Dec	--	0.2	0.1	0.1	0.1	0.1	0.1	0.1	0.1	0.2
Jan	0.2	0.1	0.2	0.2	0.1	0.2	0.2	0.3	0.2	0.2
Feb	0.2	0.2	0.3	0.3	0.2	0.3	0.3	0.4	0.2	0.3
Mar	0.4	0.3	0.2	0.3	0.3	0.3	0.5	0.1	0.4	0.2
Apr	0.8	0.7	0.8	0.5	0.4	0.6	0.7	0.8	0.9	0.7
May	1.9	1.5	2.0	2.0	1.7	1.9	1.4	1.3	1.5	1.7
June	2.5	2.1	2.2	2.1	3.1	2.8	2.2	2.7	1.7	2.2
July	2.1	2.2	1.8	2.0	2.0	1.6	1.8	1.8	1.6	2.4
Aug	7.3	7.9	6.1	7.9	7.2	8.6	6.6	6.9	6.9	5.9
Sep	11.3	10.7	11.4	9.6	9.8	10.7	10.9	11.0	11.2	10.8
Oct	16.2	13.5	14.6	12.3	12.7	11.8	13.4	13.0	13.4	14.3
Nov	7.0	7.8	8.1	9.1	8.6	8.2	7.3	7.3	7.7	7.4
Dec	6.9	5.8	6.7	6.6	7.3	6.6	7.5	6.9	7.0	6.5
Jan	6.3	6.7	6.8	6.9	6.5	6.2	6.9	7.3	6.9	6.9
Feb	6.5	6.1	7.5	7.1	7.2	6.6	7.1	7.0	7.4	6.5
Mar	7.6	7.7	8.1	8.1	8.0	8.2	9.0	8.4	7.9	8.2
Apr	7.9	7.7	8.3	8.6	8.7	8.2	8.4	8.3	8.2	8.4
May	7.0	8.3	7.4	7.9	7.9	6.9	7.6	7.4	7.1	7.1
June	5.0	6.2	4.6	5.1	5.0	6.4	4.7	5.6	5.0	5.9
July	2.9	4.3	2.7	3.2	3.1	3.8	3.4	3.3	4.6	4.2

1/ Each month includes marketed shares of all potatoes, regardless of crop season. The marketing year is 21 months long-- from November of the preceding year thru July of the succeeding year.

Source: USDA, NASS, Potatoes.

Table P-7---U.S. potatoes: Monthly retail prices, 2000-09

Item/year	Jan	Feb	Mar	Apr	May	June	July	Aug	Sept	Oct	Nov	Dec	Change Sep-Sep
<i>Dollars/pound</i>													<i>Percent</i>
Potato chips													
2000	3.386	3.448	3.354	3.409	3.345	3.302	3.310	3.302	3.416	3.341	3.276	3.437	--
2001	3.391	3.361	3.378	3.315	3.395	3.564	3.335	3.404	3.397	3.589	3.507	3.477	-0.6
2002	3.437	3.278	3.418	3.294	3.162	3.430	3.195	3.312	3.498	3.357	3.418	3.472	3.0
2003	3.483	3.462	3.546	3.581	3.415	3.581	3.367	3.539	3.508	3.425	3.493	3.583	0.3
2004	3.428	3.584	3.435	3.377	3.359	3.446	3.460	3.455	3.244	3.395	3.308	3.350	-7.5
2005	3.256	3.315	3.224	3.456	3.377	3.352	3.364	3.363	3.302	3.367	3.412	3.459	1.8
2006	3.426	3.370	3.517	3.457	3.604	3.369	3.467	3.544	3.533	3.494	3.399	3.409	7.0
2007	3.359	3.424	3.485	3.482	3.511	3.473	3.512	3.608	3.556	3.637	3.667	3.646	0.6
2008	3.530	3.759	3.771	3.885	3.837	4.062	4.159	4.120	4.123	4.196	4.330	4.482	16.0
2009	4.534	4.611	4.550	4.683	4.438	4.557	4.566	4.554	4.627				12.2
Fresh (tablestock)													
2000	0.392	0.401	0.393	0.388	0.379	0.376	0.390	0.400	0.374	0.367	0.351	0.347	--
2001	0.355	0.348	0.356	0.362	0.363	0.388	0.409	0.439	0.422	0.418	0.410	0.410	12.8
2002	0.426	0.447	0.465	0.493	0.508	0.517	0.549	0.559	0.511	0.492	0.473	0.479	21.1
2003	0.483	0.472	0.463	0.466	0.466	0.462	0.464	0.464	0.444	0.441	0.438	0.439	-13.1
2004	0.457	0.446	0.459	0.461	0.435	0.462	0.471	0.464	0.446	0.450	0.443	0.449	0.5
2005	0.458	0.448	0.440	0.450	0.452	0.455	0.477	0.491	0.482	0.505	0.499	0.498	8.1
2006	0.504	0.517	0.517	0.522	0.533	0.541	0.556	0.572	0.563	0.545	0.517	0.517	16.8
2007	0.517	0.514	0.518	0.529	0.530	0.538	0.545	0.522	0.520	0.517	0.527	0.520	-7.6
2008	0.525	0.531	0.542	0.546	0.562	0.598	0.672	0.724	0.763	0.731	0.699	0.678	46.7
2009	0.676	0.660	0.652	0.620	0.616	0.634	0.641	0.638	0.612				-19.8

Source: U.S. Dept. of Labor, Bureau of Labor Statistics.

Table P-8: Potatoes: Monthly frozen stocks in cold storage by crop year, 2005-09

Year	Jan.	Feb.	Mar.	Apr.	May	June	July	Aug.	Sep.	Oct.	Nov.	Dec.	Average
<i>-- Million pounds --</i>													
Frozen fries stocks 1/													
2005	920.8	904.0	855.8	926.5	940.4	948.0	905.1	893.6	932.2	962.5	905.3	848.6	911.9
2006	855.0	918.6	929.9	922.0	861.8	877.4	775.1	767.5	808.2	859.8	844.2	758.3	848.1
2007	826.1	850.0	886.2	878.6	845.4	871.9	788.7	799.0	868.8	914.3	863.4	820.5	851.1
2008	878.5	902.6	880.6	902.0	856.7	947.7	857.9	881.5	926.0	958.3	963.1	874.1	902.4
2009	936.4	989.3	990.8	979.7	967.9	1,011.2	973.8	903.2					969.0
2009/2008	106.6	109.6	112.5	108.6	113.0	106.7	113.5	102.5					107.4
Other frozen potatoes													
2005	248.0	248.9	237.9	247.8	237.6	242.5	249.8	227.7	248.2	237.5	217.2	202.5	237.1
2006	221.2	228.5	229.1	253.5	243.4	230.7	221.3	199.6	201.4	208.2	207.9	196.6	220.1
2007	215.2	213.6	230.1	223.6	225.2	206.3	203.0	201.4	211.2	219.4	215.0	191.9	213.0
2008	210.6	218.2	207.1	233.1	218.3	242.4	249.6	245.2	254.8	243.1	249.0	224.5	233.0
2009	234.6	237.5	237.4	237.6	235.3	233.9	213.7	206.9					229.6
Total in cold storage													
2005	1,168.8	1,152.8	1,093.7	1,174.3	1,178.1	1,190.5	1,154.9	1,121.3	1,180.4	1,200.0	1,122.5	1,051.1	1,149.0
2006	1,076.2	1,147.1	1,159.0	1,175.5	1,105.2	1,108.1	996.4	967.1	1,009.6	1,068.1	1,052.1	954.8	1,068.3
2007	1,041.3	1,063.6	1,116.2	1,102.2	1,070.7	1,078.2	991.8	1,000.4	1,080.0	1,133.8	1,078.4	1,012.4	1,064.1
2008	1,089.1	1,120.8	1,087.7	1,135.0	1,074.9	1,190.0	1,107.5	1,126.7	1,180.8	1,201.5	1,212.1	1,098.6	1,135.4
2009	1,171.0	1,226.8	1,228.2	1,217.3	1,203.2	1,245.1	1,187.5	1,110.1					1,198.6
2009/2008	107.5	109.5	112.9	107.2	111.9	104.6	107.2	98.5					105.6
Pacific 2/													
2006	492.4	562.0	569.6	573.7	545.7	507.2	461.9	475.3	473.2	502.6	501.4	441.1	508.8
2007	466.3	484.1	508.1	496.1	465.4	442.1	424.3	443.9	476.0	490.1	438.2	418.9	462.8
2008	460.5	454.6	464.1	465.4	446.7	466.7	444.8	454.8	465.2	450.9	460.3	398.9	452.8
2009	439.8	463.6	508.4	491.9	481.4	513.7	506.9	478.2					485.5
Mountain 3/													
2006	230.8	232.7	236.6	233.1	222.7	238.3	222.2	197.9	216.6	240.8	225.7	211.3	225.7
2007	244.7	247.3	265.1	262.0	239.0	260.5	237.9	228.4	247.4	275.8	265.1	244.2	251.4
2008	251.2	271.9	252.1	275.2	256.5	294.1	260.8	259.5	277.7	278.9	278.1	259.7	268.0
2009	259.5	269.7	262.5	257.9	249.3	244.7	249.7	234.8					253.5
Central													
2006	265.3	262.5	261.7	278.9	245.6	270.0	223.1	213.4	236.3	238.9	236.4	218.7	245.9
2007	245.2	245.7	258.7	257.5	276.1	279.5	245.7	247.6	264.1	273.2	280.2	259.9	261.1
2008	278.0	288.1	273.5	294.1	273.5	307.6	287.5	296.2	313.1	319.4	315.4	291.2	294.8
2009	322.7	321.2	310.4	241.5	431.6	334.5	273.6	246.2					310.2
East 4/													
2006	87.7	89.8	91.0	90.9	90.8	92.6	89.2	77.5	83.5	84.3	88.7	83.7	87.5
2007	85.1	86.6	84.4	86.7	90.2	96.0	83.9	80.5	92.4	94.7	95.0	89.4	88.7
2008	99.3	102.8	97.9	100.3	98.3	121.6	114.7	116.1	124.8	152.2	158.3	148.8	119.6
2009	149.1	147.0	145.5	142.7	148.2	152.2	157.3	150.8					149.1
In public warehouses:													
2006	- - -	883.1	887.4	824.4	832.6	813.4	733.9	724.8	736.1	778.4	776.3	704.4	790.4
2007	767.7	787.7	822.2	824.4	808.4	813.4	749.5	769.0	826.0	871.4	840.2	789.1	805.8
2008	826.7	843.1	823.9	871.0	814.8	908.9	869.1	876.1	928.6	931.4	941.9	855.9	874.3
2009	892.2	915.7	957.2	939.6	935.9	964.7	921.9	857.6					923.1

1/ All are end-of-month inventories in all US regions. One pound of french fries is processed from an average 2 pounds of raw potatoes.

2/ WA, OR, CA. 3/ AZ, CO, ID, MT, NV, NM, UT, WY. 4/ New England, Middle Atlantic, and South Atlantic States.

Source: USDA, NASS, Cold Storage; Potato Stocks.

Table P-9--Potatoes: U.S. crop utilization by product, crop years 1997-2008

Potato products	1997	1998	1999	2000	2001	2002	2003	2004	2005	2006	2007	2008	2009	2007-08 Change
-- 1,000 cwt --														
Sales, all seasons	429,433	434,454	436,998	464,572	401,060	421,644	417,329	413,573	390,419	406,309	411,209	384,478		-6.5%
Table stock	131,670	125,099	133,947	139,590	122,552	131,889	120,663	123,846	113,626	113,335	110,860	109,351		-1.4%
Processing	268,352	281,399	274,574	287,372	250,475	262,706	270,038	264,967	252,612	267,754	276,892	253,424		-8.5%
Frozen french fries	131,628	142,933	140,196	146,869	126,711	124,875	132,378	134,788	126,545	126,083	139,624	134,394		-3.7%
Other frozen	33,397	25,162	23,592	26,723	23,598	28,951	24,959	23,555	25,398	24,229	26,571	19,558		-26.4%
Chips	48,130	51,504	52,941	52,405	54,080	51,640	55,524	51,284	52,365	64,377	54,343	50,744		-6.6%
Dehydrated	48,389	55,521	50,830	54,332	40,759	51,357	51,156	49,719	43,437	48,809	49,021	40,714		-16.9%
Canned	5,497	4,694	5,705	5,077	4,312	4,833	4,475	3,920	3,135	2,887	3,304	2,947		-10.8%
Starch, flour, other	1,311	1,585	1,310	1,966	1,015	1,050	1,546	1,701	1,732	1,369	4,029	5,067		25.8%
Other sales	29,411	27,956	28,477	37,610	28,033	27,049	26,628	24,760	24,181	25,220	23,457	21,703		-7.5%
Seed	25,808	24,845	25,336	23,345	24,537	24,005	24,623	22,908	22,272	23,610	22,297	20,900		-6.3%
Feed	3,603	3,111	3,141	14,265	3,496	3,044	2,005	1,852	1,909	1,610	1,160	803		-30.8%
Non-sales	37,658	41,213	41,095	48,972	36,613	36,527	40,870	42,233	33,369	34,389	33,666	30,576		-9.2%
Seed, feed, home	5,475	5,764	5,545	5,287	5,386	5,622	5,546	4,801	4,797	4,750	4,105	4,138		0.8%
Loss and shrinkage	32,183	35,449	35,550	43,685	31,227	30,905	35,324	37,432	28,572	29,639	29,561	26,438		-10.6%
Total production 1/	467,091	475,667	478,093	513,544	437,673	458,171	458,199	455,806	423,788	440,698	444,875	415,054		-6.7%
Total used for seed 2/														
Winter	427	499	473	488	460	447	537	618	565	504	396	297		-25.0%
Spring	1,939	1,793	1,615	1,608	1,909	1,924	1,603	1,507	1,530	1,590	1,476	1,626		10.2%
Summer	1,385	1,257	1,161	1,172	1,213	1,282	1,097	989	1,065	991	1,044	885		-15.2%
Fall	26,224	25,657	26,331	23,869	25,043	24,496	23,415	21,630	22,456	23,289	21,560	21,711		0.7%
Total seed use	29,975	29,206	29,580	27,137	28,625	28,149	26,652	24,744	25,616	26,374	24,476	24,519		0.2%
% of production	6.4%	6.1%	6.2%	5.3%	6.5%	6.1%	5.8%	5.4%	6.0%	6.0%	5.5%	5.9%		
Price paid for field seed 3/														
Dollars per cwt	\$7.60	\$9.10	\$8.50	\$10.45	\$8.50	\$10.90	\$10.80	\$9.69	\$9.30	\$11.80	\$12.00	\$13.10		9.2%
Seed, feed, shrink, and loss where grown														
Winter	78	79	96	272	148	61	63	63	189	133	113	55		-51.3%
Spring	801	530	594	607	947	1,085	1,191	1,060	891	828	820	1,000		22.0%
Summer	678	789	768	865	699	596	750	596	548	544	550	514		-6.5%
Fall	36,101	39,815	39,637	47,228	34,819	34,785	28,672	40,514	31,741	32,884	32,183	29,007		-9.9%
Total non-sales	37,658	41,213	41,095	48,972	36,613	36,527	30,676	42,233	33,369	34,389	33,666	30,576		-9.2%
% of production	8.1%	8.7%	8.6%	9.5%	8.4%	8.0%	6.7%	9.3%	7.9%	7.8%	7.6%	7.4%		
Share of total sales														
-- Percent --														
Table stock	32.0	30.4	32.6	33.9	29.8	32.1	29.3	30.1	27.6	27.6	27.0	26.6		
Processing potatoes	65.3	68.4	66.8	69.9	60.9	63.9	65.7	64.4	61.4	65.1	67.3	61.6		
Frozen French fries	32.0	34.8	34.1	35.7	30.8	30.4	32.2	32.8	30.8	30.7	34.0	32.7		
Chips	11.7	12.5	12.9	12.7	13.2	12.6	13.5	12.5	12.7	15.7	13.2	12.3		
Dehydrated	11.8	13.5	12.4	13.2	9.9	12.5	12.4	12.1	10.6	11.9	11.9	9.9		
Seed and feed	7.2	6.8	6.9	9.1	6.8	6.6	6.5	6.0	5.9	6.1	5.7	5.3		
USDA purchases (FY)														
-- 1,000 pounds --														
Frozen	---	---	64,310	66,568	84,629	71,398.8	65,419	96,664	53,262	76,349	21,424	49,025	34,294	128.8%
Canned	---	---	7,894	8,042	34,700	3,966	7,821	6,940	7,638	6,903	7,307	9,804	8,335	34.2%
Fresh, incl. bulk	---	---	2,880	1,880	82,680	0	2,280	63,840	65,680	100,280	119,959	115,560	81,680	-3.7%
Dehydrated	---	---	4,830	5,490	56,152	2,310	18,480	2,790	33,780	1,230	570	1,560	3,720	173.7%
Total purchases	---	---	79,914	81,979	258,161	77,675	94,001	170,234	160,360	184,762	149,259	175,949	128,029	17.9%

f = ERS projection. --- = not available. Projections (italics) are based on the share of total production sold in the preceding 3 years.

1/ Equals the sum of total sales and non-sales. 2/ Included in production sold and in non-sales seed use on farm where grown.

3/ Average price paid during the crop year. Source: Agricultural Prices Summary, NASS. 4/ Disappearance in fresh-weight equivalent (farm weight).

5/ Expenditures equal the value of production sold in Table P-2 plus import value minus export value in Table P-10.

Sources: USDA, NASS, Potatoes Summary; Final Estimates; www.AMS.USDA.gov (Potato Product Purchases).

Table P10--Potatoes: U.S. per capita disappearance (net domestic use) 1/

Product	Average 2000-04	2005	2006	2007	2008	2009 f
----- Pounds/person, fresh-weight -----						
Fresh	46.13	41.30	38.61	38.75	37.88	37.54
Processing	90.21	84.30	85.27	85.88	80.79	79.45
Freezing	57.09	54.38	53.30	53.23	51.59	50.64
Chipping	16.77	16.20	18.75	18.73	15.85	16.31
Dehydrating	14.90	12.79	12.45	13.04	12.40	11.69
Canning	1.45	0.93	0.77	0.88	0.95	0.81
Total	136.34	125.60	123.88	124.63	118.67	116.99

f = ERS forecast. 1/ Disappearance (use) is a proxy for calendar year consumption.

Source: Computed by USDA, Economic Research Service.

Table P-11--Potatoes: U.S. export value and volume by product, monthly 2005-08

Item	Sep	Oct	Nov	Dec	Jan	Feb	Mar	Apr	May	Jun	Jul	Aug	Yr. to date 3/	Crop year 1/
-- Million \$ --														
TOTAL EXPORT VALUE 2/														
2005/06	65.7	72.0	68.9	78.0	71.7	63.6	73.6	72.2	83.6	84.4	86.9	83.2	903.7	903.7
2006/07	74.1	82.2	80.4	86.4	77.0	76.4	87.5	79.4	89.3	92.0	92.9	87.7	1,005.3	1,005.3
2007/08	86.4	92.2	90.6	90.9	84.2	89.0	94.1	94.1	105.4	104.7	117.5	108.6	1,157.6	1,157.6
2008/09	105.3	92.7	96.3	94.5	92.4	89.7	100.8	96.4	108.7	106.8	107.2	93.4	1,184.3	1,184.3
Fresh or chilled														
2005/06	8.4	8.1	7.6	9.0	7.1	7.5	9.4	10.2	15.2	18.9	19.2	11.5	132.3	132.3
2006/07	7.0	6.8	7.9	7.7	7.9	7.5	8.5	8.8	14.9	16.2	17.2	10.6	121.1	121.1
2007/08	8.1	8.8	9.2	9.8	8.3	9.4	9.4	9.7	15.2	19.0	22.7	14.5	144.1	144.1
2008/09	13.8	10.7	10.6	11.7	9.3	9.4	8.9	10.8	13.8	17.9	21.3	11.3	149.7	149.7
Frozen fries														
2005/06	33.2	36.7	32.5	38.7	35.2	32.7	36.8	36.8	37.9	37.4	41.3	39.2	438.4	438.4
2006/07	40.6	41.9	41.7	45.0	41.1	41.3	48.2	43.4	42.1	45.7	44.6	46.6	522.2	522.2
2007/08	47.6	46.3	52.1	49.6	48.0	49.1	49.9	54.0	55.7	53.3	59.6	58.6	623.8	623.8
2008/09	55.3	52.3	53.2	53.5	50.5	49.4	59.3	52.8	59.1	50.6	50.3	50.1	636.4	636.4
Other frozen														
2005/06	2.5	3.2	3.3	4.9	4.2	3.0	2.7	2.7	2.9	4.7	3.2	3.1	40.6	40.6
2006/07	2.5	2.3	2.6	3.3	3.2	2.7	3.4	2.8	3.4	3.7	4.2	5.3	39.3	39.3
2007/08	4.5	5.1	4.5	5.6	3.6	4.9	5.5	4.9	5.6	4.9	5.0	5.5	59.7	59.7
2008/09	5.9	4.7	5.0	4.4	5.2	5.6	6.3	5.0	6.3	6.8	6.1	5.5	66.7	66.7
Chips														
2005/06	12.6	15.5	16.3	13.6	14.9	12.2	16.9	13.4	14.5	13.2	13.3	16.7	173.3	173.3
2006/07	13.6	19.9	16.1	15.0	12.4	14.6	13.0	12.8	14.5	13.7	13.4	14.3	173.3	173.3
2007/08	15.8	19.0	14.0	14.2	13.6	14.6	17.9	14.0	15.1	15.5	17.7	18.8	190.1	190.1
2008/09	19.1	14.2	15.8	13.8	14.2	14.7	15.7	14.3	15.2	16.0	16.0	13.1	181.9	181.9
Flakes and granules														
2005/06	4.6	4.6	4.9	6.1	5.4	4.9	3.7	4.1	7.3	5.5	4.6	7.2	63.1	63.1
2006/07	6.2	5.5	6.2	7.8	7.3	6.4	9.8	7.4	9.0	6.7	7.7	5.3	85.4	85.4
2007/08	4.3	7.9	5.8	5.8	6.4	5.9	5.4	4.9	6.6	5.3	5.1	5.3	68.7	68.7
2008/09	4.9	5.5	5.7	5.0	5.8	4.3	4.9	5.7	5.6	5.2	5.8	4.5	62.9	62.9
-- Million pounds, farm-weight --														
SELECTED TOTAL EXPORT VOLUME 7/														
2005/06	351.9	384.9	351.0	408.7	372.0	336.1	356.3	361.5	435.3	433.5	456.1	418.0	4,665.5	4,665.5
2006/07	384.9	404.2	404.8	440.5	398.5	387.1	454.6	409.6	436.5	451.9	483.5	435.8	5,092.1	5,092.1
2007/08	413.1	446.0	444.4	430.6	414.4	427.2	440.6	438.0	488.7	481.4	543.4	485.1	5,452.8	5,452.8
2008/09	459.9	423.5	434.2	416.9	408.4	381.3	451.2	419.5	472.5	459.5	489.1	410.8	5,226.7	5,226.7
Fresh or chilled														
2005/06	44.7	42.1	37.9	42.4	31.6	32.7	42.1	45.9	69.3	89.1	102.7	50.8	631.3	631.3
2006/07	33.0	35.0	35.4	33.2	33.3	30.8	35.9	39.5	58.4	73.3	103.0	62.8	573.5	573.5
2007/08	46.5	46.3	45.4	46.1	39.0	42.8	39.5	38.2	60.4	76.6	97.7	43.3	621.7	621.7
2008/09	52.5	40.5	42.6	42.1	43.9	35.0	33.8	43.3	62.6	84.7	116.3	63.2	660.5	660.5
Frozen fries 4/														
2005/06	182.7	209.1	174.6	217.2	196.7	178.1	201.7	205.2	217.9	216.0	240.8	224.0	2,464.0	2,464.0
2006/07	228.6	235.6	235.6	250.8	225.0	227.8	263.7	237.2	228.5	246.6	237.9	252.1	2,869.3	2,869.3
2007/08	251.2	243.7	271.5	258.6	250.1	255.1	259.7	280.1	285.9	276.0	308.8	300.9	3,241.7	3,241.7
2008/09	272.6	259.5	261.3	261.6	243.9	240.7	294.2	260.9	288.6	255.1	247.8	245.1	3,131.4	3,131.4
Other frozen 4/														
2005/06	12.7	14.5	13.6	17.9	14.7	13.2	11.2	10.8	11.9	18.2	13.1	12.9	164.6	164.6
2006/07	10.1	9.3	10.1	14.1	12.8	10.8	13.1	10.8	13.3	16.9	16.9	20.7	158.8	158.8
2007/08	17.9	20.1	17.2	21.7	13.8	19.0	21.5	19.4	22.9	19.4	20.2	21.9	235.2	235.2
2008/09	22.8	18.4	18.5	16.9	18.9	20.1	22.9	17.7	22.4	24.0	20.9	18.9	242.3	242.3
Chips 5/														
2005/06	43.1	51.9	53.9	46.1	49.5	40.0	52.2	42.9	41.9	36.5	37.4	47.8	542.9	542.9
2006/07	39.7	57.1	46.7	45.2	35.7	42.2	35.4	37.8	44.1	39.2	38.5	41.4	503.0	503.0
2007/08	48.0	57.8	42.6	41.3	37.8	42.8	57.1	39.0	42.6	47.1	57.4	56.9	570.4	570.4
2008/09	54.3	41.3	47.1	41.1	40.9	42.6	47.8	38.5	40.2	43.3	43.6	36.7	517.4	517.4
Flakes and granules 6/														
2005/06	68.8	67.2	71.1	85.1	79.5	72.2	49.1	56.8	94.3	73.8	62.2	82.5	862.6	862.6
2006/07	73.6	67.3	77.1	97.2	91.8	75.6	106.5	84.3	92.2	75.9	87.2	58.8	987.5	987.5
2007/08	49.5	78.1	67.7	62.9	73.6	67.5	62.6	61.3	76.8	62.3	59.3	62.1	783.8	783.8
2008/09	57.8	63.8	64.7	55.3	60.8	42.8	52.5	59.0	58.7	52.4	60.4	46.9	675.1	675.1

1/ Potato crop year is September-August. Items in italics are ERS projections. 2/ Includes the value of all potato exports. 3/ Year-to-date totals are based on the Sept-Aug. crop year. 4/ Converted to fresh weight basis by a factor of 2. 5/ Converted to fresh weight basis by a factor of 4.

6/ Converted to fresh weight basis by a factor of 6.5. 7/ Total of items shown on a fresh-weight basis. Excludes flour, seed, starch and canned.

Source: U.S. Dept of Commerce, U.S. Census Bureau and USDA, FAS, www.FAS.USDA.gov/ustrade (FATUS).

Table P-12--Potatoes: U.S. import value and volume by product, monthly 2004-08

Item	Sep	Oct	Nov	Dec	Jan	Feb	Mar	Apr	May	Jun	Jul	Aug	Year to date 2/	Crop year 1/
-- Million \$ --														
TOTAL IMPORT VALUE 3/														
2005/06	55.1	64.3	63.1	67.0	69.4	59.4	73.8	72.3	74.2	65.4	70.9	68.8	803.6	803.6
2006/07	67.5	69.9	72.3	64.9	76.3	69.5	79.2	83.2	81.5	67.2	72.8	66.0	870.3	870.3
2007/08	61.8	78.7	73.9	72.7	76.9	75.0	86.1	82.1	89.1	78.9	79.1	76.2	930.4	930.4
2008/09	76.8	83.5	85.7	79.4	85.8	80.8	94.8	91.1	84.9	80.5	81.9	78.0	1,003.3	1,003.3
Fresh or chilled														
2005/06	5.0	8.0	10.2	10.3	9.5	9.0	11.4	9.5	7.6	5.1	4.1	4.4	94.2	94.2
2006/07	6.1	8.0	10.1	8.9	11.1	9.3	10.6	12.0	13.5	7.2	4.1	3.5	104.4	104.4
2007/08	5.3	7.5	9.3	12.7	12.2	11.2	14.7	13.4	14.6	14.0	9.8	9.1	133.8	133.8
2008/09	10.5	13.3	16.1	16.5	13.8	12.9	13.0	9.8	10.0	10.4	6.5	4.7	137.4	137.4
Frozen fries														
2005/06	35.8	40.5	35.6	39.8	41.3	35.8	41.7	39.8	43.4	42.8	48.2	46.1	490.8	490.8
2006/07	46.2	45.6	45.7	40.9	46.7	40.5	45.2	46.4	48.2	45.8	52.2	46.8	550.1	550.1
2007/08	42.7	54.0	48.0	44.0	46.8	47.0	50.5	48.0	54.8	50.2	52.0	49.3	587.2	587.2
2008/09	50.4	52.6	50.8	44.9	49.8	47.6	50.2	49.6	50.0	48.6	53.2	50.5	598.3	598.3
Other frozen														
2005/06	3.5	3.9	3.9	4.2	4.4	3.5	4.2	4.9	4.5	4.7	4.2	4.1	50.0	50.0
2006/07	3.8	5.1	4.5	3.8	4.4	3.8	3.6	4.2	4.1	4.1	4.3	3.6	49.2	49.2
2007/08	4.0	4.7	4.6	3.8	5.0	4.4	4.3	4.1	4.0	4.4	5.5	4.8	53.6	53.6
2008/09	4.5	5.2	5.9	4.8	5.4	4.9	5.1	5.8	4.9	4.6	4.4	5.0	60.6	60.6
Chips														
2005/06	7.0	8.1	9.0	8.0	9.1	5.4	6.5	6.7	11.1	7.6	10.0	10.4	98.9	98.9
2006/07	7.4	6.4	5.3	6.9	8.8	8.7	8.7	8.7	8.8	5.7	6.4	5.8	87.6	87.6
2007/08	5.2	5.3	5.9	3.4	2.5	2.4	2.9	2.8	3.5	3.4	3.0	3.6	43.8	43.8
2008/09	3.6	3.2	63.4	3.9	4.2	3.4	4.5	4.4	5.0	4.2	4.7	4.4	108.8	108.8
Potato starch														
2005/06	2.8	2.1	2.6	2.2	2.4	1.6	2.5	2.7	2.1	3.2	3.2	2.5	29.9	29.9
2006/07	2.9	3.2	4.5	2.8	2.9	3.4	3.8	2.6	2.9	2.5	3.7	3.9	39.2	39.2
2007/08	2.9	5.3	4.2	5.2	5.0	3.9	4.5	4.0	4.6	3.4	3.9	3.3	50.2	50.2
2008/09	2.8	4.0	3.5	3.9	3.3	2.9	4.6	4.7	3.8	3.0	3.4	4.3	44.2	44.2
-- Million pounds --														
SELECTED TOTAL IMPORT VOLUME 4/														
2005/06	437.0	454.6	461.2	474.8	475.4	413.4	489.8	483.2	464.9	493.4	517.7	460.8	5,626.2	5,626.2
2006/07	475.6	485.9	554.1	444.4	521.6	474.7	534.9	522.1	555.5	448.0	456.7	418.3	5,891.8	5,891.8
2007/08	390.4	519.3	468.1	509.2	502.3	468.6	518.9	498.5	560.8	486.0	475.1	431.3	5,828.5	5,828.5
2008/09	424.0	476.0	484.6	472.1	472.1	450.4	555.3	529.6	505.5	468.5	474.6	464.9	5,777.7	5,777.7
Fresh or chilled														
2005/06	29.3	51.8	69.9	69.4	65.6	62.0	72.3	61.4	47.2	32.1	21.7	26.7	609.5	609.5
2006/07	36.2	50.5	70.2	65.3	94.3	80.6	100.6	116.0	145.6	75.1	29.9	25.8	890.0	890.0
2007/08	37.6	48.9	65.1	104.0	101.0	94.1	122.3	116.5	126.7	109.4	64.7	48.7	1,039.1	1,039.1
2008/09	48.0	66.0	83.6	91.1	85.0	80.2	89.5	69.3	81.2	74.8	41.5	29.9	840.1	840.1
Frozen fries 5/														
2005/06	230.5	261.2	231.3	255.8	259.6	245.3	261.2	249.9	268.8	260.1	289.2	274.6	3,087.5	3,087.5
2006/07	275.7	277.9	268.9	241.8	274.4	240.6	268.8	272.5	281.1	259.6	289.7	256.2	3,207.3	3,207.3
2007/08	234.3	292.0	256.4	236.3	245.5	247.0	266.6	257.0	291.2	266.1	274.9	257.8	3,125.0	3,125.0
2008/09	266.1	283.8	276.5	244.1	260.3	251.4	272.7	270.7	263.0	256.5	280.5	258.7	3,184.3	3,184.3
Other frozen 5/														
2005/06	21.0	24.3	23.5	24.2	25.2	20.4	23.7	27.1	24.8	25.1	23.2	22.1	284.6	284.6
2006/07	20.6	27.9	24.2	20.2	22.7	20.1	19.0	21.6	20.2	20.2	21.1	16.9	254.8	254.8
2007/08	19.1	23.1	23.3	17.6	24.4	20.2	18.8	18.2	17.6	19.2	25.7	22.5	249.7	249.7
2008/09	20.6	22.1	25.3	20.4	22.0	19.6	21.2	23.7	19.7	18.6	18.0	20.3	251.5	251.5
Chips 6/														
2005/06	19.4	21.5	24.0	21.3	24.8	14.5	18.2	18.2	30.1	20.6	25.4	26.1	264.2	264.2
2006/07	19.0	17.4	14.1	14.1	22.4	21.4	20.7	22.2	21.1	13.3	14.8	13.7	214.3	214.3
2007/08	12.3	12.2	13.5	8.1	5.9	5.6	6.7	6.7	8.4	8.5	7.0	9.4	104.2	104.2
2008/09	8.5	8.0	8.4	10.0	10.3	8.3	10.7	10.5	11.3	10.9	10.8	11.1	118.8	118.8
Potato starch 7/														
2005/06	136.8	95.7	112.5	104.1	100.2	71.2	114.3	126.6	94.0	155.4	158.1	111.3	1,380.4	1,380.4
2006/07	124.1	112.2	176.7	102.9	107.8	112.0	125.7	89.8	87.4	79.7	101.3	105.7	1,325.5	1,325.5
2007/08	87.0	143.2	109.8	143.1	125.4	101.6	104.5	100.1	117.0	82.8	102.8	93.1	1,310.5	1,310.5
2008/09	80.8	96.2	90.9	106.5	94.4	90.8	161.1	155.4	130.4	107.8	123.7	144.9	1,383.1	1,383.1

1/ Potato crop year is from September -- August. Annualized estimates may not sum to total. 2/ Year to date values are based on crop year (Sept-Aug).

3/ Includes dried, flour and meal, flakes and granules. 4/ Total volume is sum of product fresh weight basis.

5/ Converted to fresh weight basis by a factor of 2. 6/ Converted to fresh weight basis by a factor of 4. 7/ Converted to fresh weight basis by a factor of 8.

Source: U.S. Dept. of Commerce, U.S. Census Bureau and USDA, FAS, www.FAS.USDA.gov/ustrade (FATUS).

Table P-13--Potatoes: Value of U.S. exports and imports by product, 2000-08

Products	2000	2001	2002	2003	2004	2005	2006	2007	2008	Change
-- Million dollars --										Percent
EXPORT VALUE										
Seed potatoes	4.5	6.5	5.5	6.0	7.0	7.8	5.6	5.9	6.7	13.0
Fresh or chilled	84.6	83.0	117.5	82.7	65.9	102.4	128.6	124.2	155.1	24.8
Processed, total	676.9	610.5	600.7	557.1	664.8	724.9	808.1	912.1	1,024.5	12.3
Frozen fries	349.5	348.7	341.9	312.6	363.3	408.4	466.5	548.8	642.5	17.1
Other frozen	27.1	20.1	21.9	23.7	32.3	38.7	37.4	48.4	59.9	23.8
Chips	225.7	174.7	165.8	144.2	183.4	179.3	179.8	171.7	189.9	10.6
Dried, flour and meal	9.5	9.0	7.8	6.9	7.4	7.7	10.0	18.0	16.1	-10.9
Flakes and granules	42.9	39.3	32.3	38.3	44.0	53.4	68.6	82.7	66.2	-20.0
Canned & Preserved	19.4	15.6	27.5	28.9	31.0	35.5	44.4	39.7	45.6	14.9
Potato starch	2.7	3.1	3.4	2.5	3.5	2.0	1.5	2.8	4.3	56.0
TOTAL U.S. EXPORTS	766.0	700.0	723.7	645.8	737.7	835.1	942.3	1,042.3	1,186.3	13.8
Japan	258.1	221.3	199.0	178.3	203.5	226.9	251.8	270.1	302.1	11.8
Canada	145.2	157.2	217.5	171.6	169.2	179.1	222.9	239.5	280.5	17.1
Mexico	63.7	61.3	68.6	85.9	107.5	147.4	175.6	152.3	151.9	-0.2
Frozen fries / exports	45.6%	49.8%	47.2%	48.4%	49.2%	48.9%	49.5%	52.7%	54.2%	2.9
IMPORT VALUE										
Seed potatoes	30.0	15.5	25.0	22.9	16.4	14.8	22.6	20.7	13.5	-34.9
Fresh or chilled	47.2	51.9	79.1	67.1	58.2	76.4	93.7	106.1	155.4	46.4
Processed, total	424.1	458.1	477.1	595.5	694.3	679.6	719.9	763.7	837.1	9.6
Frozen fries	328.1	354.5	362.8	437.8	517.1	472.7	517.4	560.1	597.3	6.6
Other frozen	30.6	29.3	28.5	34.6	32.9	43.2	51.5	49.1	56.8	15.8
Chips 1/	32.5	40.0	34.9	72.1	96.3	103.5	92.8	81.3	38.1	-53.2
Dried, flour and meal	0.2	0.8	1.1	1.0	2.1	2.2	1.5	2.1	2.2	2.3
Flakes and granules	11.8	12.7	20.5	21.1	13.6	16.0	14.9	19.0	56.4	197.4
Canned & preserved	1.9	2.4	5.9	3.6	5.2	8.4	8.2	8.8	39.6	351.2
Potato starch	19.0	18.4	23.5	25.4	27.1	33.6	33.6	43.4	46.8	7.8
TOTAL U.S. IMPORTS	501.3	525.4	581.1	685.5	768.9	770.8	836.1	890.6	1,005.9	13.0
Imports from Canada	476.7	498.1	545.9	617.1	670.7	647.5	725.8	781.0	879.9	12.7
Frozen french fries	327.6	353.7	361.4	435.5	515.0	471.3	515.9	559.3	596.3	6.6
Imports from rest of world	4.9%	5.2%	6.1%	10.0%	12.8%	16.0%	13.2%	12.3%	12.5%	1.8
Frozen fries / imports	65.4%	67.5%	62.4%	63.9%	67.2%	61.3%	61.9%	62.9%	59.4%	-5.6
NET EXPORTS										
Seed potatoes	-25.5	-9.0	-19.5	-16.9	-9.4	-7.0	-17.0	-14.8	-6.8	-54.2
Fresh or chilled	37.4	31.2	38.5	15.6	7.7	25.9	34.9	18.1	-0.3	-101.6
Processed, total	231.5	140.5	117.3	-46.9	-44.4	35.2	88.2	148.4	187.4	26.3
Frozen fries	21.5	-5.8	-20.9	-125.2	-153.8	-64.3	-50.9	-11.3	45.2	-501.4
Other frozen	-3.5	-9.2	-6.6	-10.9	-0.6	-4.5	-14.2	-0.7	3.1	-574.1
Chips	193.1	134.8	131.0	72.1	87.1	75.9	87.0	90.4	151.8	68.0
Dried, flour, and meal	9.2	8.0	6.6	5.8	5.1	5.3	8.5	15.9	13.9	-12.6
Flakes and granules	33.1	29.1	17.7	20.8	35.7	45.8	53.7	63.7	9.8	-84.6
Canned & preserved	17.5	13.2	21.7	25.3	25.7	27.1	36.2	30.9	6.0	-80.6
Potato starch	-39.4	-29.5	-32.2	-34.8	-43.6	-50.0	-32.1	-40.6	-42.4	4.5
ALL POTATOES	243.4	162.7	136.2	-48.1	-46.1	54.1	106.2	151.8	180.4	18.9
with Canada	-331.5	-340.9	-328.4	-445.6	-501.5	-466.6	251.8	270.1	302.1	11.8
with rest of world	574.9	503.6	464.7	397.5	455.4	520.7	222.9	239.5	280.5	17.1
Total U.S. trade	1,298.7	1,247.4	1,322.5	1,354.5	1,535.8	1,628.3	1,778.4	1,932.9	2,192.2	13.4
Frozen fries / total trade	52.2%	56.4%	53.3%	55.4%	57.3%	54.1%	55.3%	57.4%	56.6%	-1.4

p = preliminary.

1/ More than twice as much are now imported from Mexico than Canada. 2/ Supply equals value of production sold minus net exports.

Dehydrated potato products include flour, meal, flakes, granules, pellets, starch, and crisps (baked).

Source: USDA, FAS, www.FAS.USDA.gov/ustrade (FATUS).

Table P-14--Potatoes: Volume of U.S. exports and imports, by product, 2000-2008

Item	2000	2001	2002	2003	2004	2005	2006	2007	2008	Change
<i>-- Million pounds --</i>										<i>Percent</i>
EXPORT VOLUME										
Seed potatoes	32.4	56.8	49.8	48.6	50.7	53.2	30.0	24.4	25.1	3.1
Fresh or chilled	644.2	579.4	647.1	541.8	433.7	586.2	600.7	615.8	615.1	-0.1
Processed	3,951.5	3,696.2	3,492.5	3,307.9	3,910.2	4,036.8	4,392.8	4,845.0	5,140.3	6.1
Frozen fries 3/	2,145.0	2,165.8	2,103.2	1,871.8	2,098.8	2,267.0	2,626.7	2,944.6	3,271.6	11.1
Other frozen 3/	149.8	100.0	98.6	109.7	139.0	159.7	149.6	189.5	234.9	24.0
Chips 4/	806.2	620.6	655.0	501.9	618.5	617.7	536.8	503.7	564.6	12.1
Dried, flour, meal 5/	135.8	144.2	107.4	92.7	106.1	105.8	118.5	173.8	168.8	-2.8
Flakes, granules 5/	640.3	584.4	424.5	650.7	848.3	804.1	885.3	931.4	767.1	-17.6
Canned & Preserved 6/	19.4	15.6	27.5	28.9	31.0	35.5	44.5	39.7	45.6	14.9
Starch 1/	55.0	65.7	76.3	52.3	68.6	47.1	31.3	62.2	87.6	40.7
TOTAL EXPORTS 2/	4,628.0	4,332.4	4,189.4	3,898.3	4,394.7	4,676.2	5,023.5	5,485.1	5,780.5	5.4
Frozen fries / exports	46.3%	50.0%	50.2%	48.0%	47.8%	48.5%	52.3%	53.7%	56.6%	5.4
IMPORT VOLUME										
Seed potatoes	302.8	183.2	261.6	237.4	179.7	156.6	206.2	182.3	105.6	-42.1
Fresh or chilled	502.7	487.9	621.5	635.0	575.4	631.3	611.2	923.6	1,072.0	16.1
Processed	3,641.2	3,959.0	4,594.4	5,258.8	5,519.0	5,472.0	5,316.8	5,130.7	5,197.1	1.3
Frozen fries 3/	2,120.1	2,423.6	2,697.0	3,067.8	3,479.3	3,030.1	3,153.2	3,162.2	3,176.4	0.4
Other frozen 3/	186.2	171.2	202.4	235.6	217.7	257.7	284.2	244.5	254.8	4.2
Chips 4/	152.1	165.0	147.7	246.0	304.7	286.7	247.3	195.6	93.1	-52.4
Dried, flour, meal 5/	4.6	13.2	13.9	13.6	36.7	54.5	20.4	24.2	26.1	7.8
Flakes, granules 5/	155.2	179.8	235.2	258.5	155.9	168.9	161.1	191.0	394.6	106.6
Canned & Preserved 6/	4.5	6.7	13.0	9.1	11.4	17.3	19.3	20.4	50.6	147.8
Starch 1/	1,018.5	999.4	1,285.1	1,428.2	1,313.2	1,656.7	1,431.2	1,292.7	1,201.6	-7.1
TOTAL IMPORTS 2/	4,446.6	4,630.1	5,477.5	6,131.1	6,274.1	6,259.8	6,134.2	6,236.6	6,374.7	2.2
Imports from Canada 7/	2,028.1	2,048.3	2,420.6	2,624.4	2,698.2	2,511.5	2,610.2	2,885.4	2,983.6	3.4
Frozen fries / imports	47.7%	52.3%	49.2%	50.0%	55.5%	48.4%	51.4%	50.7%	49.8%	-1.7
Net export volume	-37.1	-139.0	-511.9	-972.2	-978.5	-573.2	-1,110.7	-751.5	-594.2	-20.9

p = preliminary; - - - = not available.

1/ Only a small amount of potato starch is for food use. Most is for industrial use such as manufacture of paper, textiles, and adhesives.

Most is for industrial use such as manufacture of paper, textiles, and adhesives. Converted to a fresh weight basis with a factor of 8.

2/ Total volumes are sums of product weights. Trade data are in calendar year to correspond with crop harvest months.

3/ Converted to fresh weight basis with a factor of 2. 4/ Converted to fresh weight basis with a factor of 4.

5/ Converted to fresh weight basis with a factor of 6.5. 6/ Converted to fresh weight basis with a factor of 1.572.

7/ Not adjusted to fresh weight basis.

Source: USDA, FAS, www.FAS.USDA.gov/ustrade (FATUS).

Table P-15--Potatoes: U.S. crop year export value by product and major market, monthly 2005-08

Markets	Sep	Oct	Nov	Dec	Jan	Feb	Mar	Apr	May	Jun	Jul	Aug	Yr.to date 2/	Crop Year 1/
Total potato exports														
-- Million \$ --														
JAPAN														
2005/06	16.9	20.1	17.6	22.4	21.6	19.1	20.2	22.2	21.4	20.8	22.4	18.3	202.3	243.0
2006/07	18.7	23.2	21.8	22.1	19.9	21.7	25.5	19.9	19.9	23.6	23.2	20.9	216.3	260.4
2007/08	23.3	23.8	24.5	23.8	22.1	24.1	25.6	24.8	26.7	24.3	27.5	26.8	242.9	297.2
2008/09	24.6	22.8	27.9	25.1	24.8	30.5	34.4	27.7	32.7	27.7			278.4	340.5
CANADA														
2005/06	12.2	10.9	12.9	13.8	12.5	13.3	15.7	18.4	24.7	27.8	29.4	20.0	162.3	211.6
2006/07	13.9	16.3	15.9	17.2	14.9	15.6	17.3	18.4	26.4	27.5	28.4	21.0	183.5	232.8
2007/08	16.2	17.4	18.7	20.4	17.1	19.1	19.9	21.2	28.5	30.8	36.2	27.5	209.1	272.8
2008/09	22.5	18.4	18.8	21.0	15.2	11.6	13.1	17.1	16.9	31.7			186.4	243.1
MEXICO														
2005/06	12.2	15.4	17.3	18.1	16.5	12.2	13.8	11.0	13.7	15.2	13.9	17.6	145.4	176.8
2006/07	15.0	16.2	15.2	17.9	17.3	13.5	13.0	12.4	13.4	10.2	11.9	13.0	144.0	168.9
2007/08	12.3	15.1	11.2	11.5	12.3	12.2	12.2	11.9	11.1	11.8	12.9	13.0	121.6	147.5
2008/09	15.5	14.4	11.9	13.6	8.7	7.7	8.7	8.7	6.8	9.6			105.8	128.3
Fresh and seed														
CANADA														
2005/06	3.8	3.0	3.3	4.7	4.3	4.4	6.7	9.3	13.6	16.0	16.9	6.7	69.1	92.7
2006/07	3.3	2.9	4.1	4.7	4.2	4.3	5.7	7.2	12.7	12.8	13.7	6.3	61.9	81.8
2007/08	3.4	3.2	4.3	5.3	4.3	4.9	6.1	7.8	12.8	14.4	18.6	9.9	66.6	95.1
2008/09	5.4	4.5	5.4	6.7	5.0	5.5	6.4	9.6	12.1	14.0			74.8	106.7
MEXICO														
2005/06	1.9	1.6	2.0	1.6	1.7	1.3	1.5	1.4	1.5	2.2	1.8	2.5	16.8	21.1
2006/07	1.7	2.0	1.7	1.8	2.2	1.5	1.2	1.5	1.8	2.0	2.1	2.2	17.4	21.8
2007/08	2.2	2.7	2.0	2.4	2.2	2.6	1.9	2.1	2.0	2.9	3.0	3.2	23.0	29.2
2008/09	4.1	2.8	2.6	2.8	2.4	2.3	1.9	2.1	1.7	2.5			25.3	32.1
Frozen French fries														
JAPAN														
2005/06	13.5	16.1	13.1	16.9	15.7	13.0	14.8	16.2	14.8	14.1	17.7	12.9	148.2	178.8
2006/07	15.6	15.6	15.6	17.2	15.2	16.4	19.7	15.4	13.8	16.2	15.5	15.6	160.6	191.7
2007/08	17.8	16.6	19.7	16.8	16.0	18.0	17.4	19.1	19.4	17.6	19.6	21.0	178.4	219.0
2008/09	19.0	17.2	20.6	19.2	17.6	19.7	25.3	21.5	23.9	18.1			202.0	248.1
MEXICO														
2005/06	4.7	5.7	5.1	6.1	5.1	5.4	6.3	4.7	5.9	5.8	6.2	6.7	54.6	67.5
2006/07	5.5	5.8	6.2	6.9	6.4	5.8	6.2	5.7	5.9	4.4	6.5	7.1	58.7	72.3
2007/08	4.8	6.6	5.6	5.9	6.0	5.8	5.8	6.2	6.0	6.0	6.9	6.2	58.6	71.7
2008/09	6.2	7.2	6.5	7.9	5.6	5.2	5.0	4.3	3.2	2.8			53.7	65.7
CANADA														
2005/06	4.3	3.8	4.5	4.6	4.1	4.6	4.5	4.1	4.6	4.9	4.6	5.0	44.0	53.6
2006/07	4.6	6.8	5.3	5.4	5.2	5.1	5.6	5.0	5.8	6.1	5.5	6.6	54.9	67.0
2007/08	5.9	6.0	6.6	7.1	6.2	5.6	5.7	6.5	6.1	7.0	7.1	7.3	62.7	77.1
2008/09	6.2	6.1	6.4	5.5	5.3	4.4	5.5	6.2	5.7	5.9			57.2	70.3
CHINA														
2005/06	1.6	1.4	0.6	1.2	1.5	1.3	1.8	1.9	2.3	2.0	2.0	3.4	15.4	20.7
2006/07	2.7	1.8	1.8	2.7	2.1	1.8	3.2	2.9	2.9	3.8	2.9	2.2	25.7	30.8
2007/08	3.6	2.4	2.4	3.2	2.4	3.6	3.1	3.9	3.6	3.7	5.1	3.4	31.8	40.3
2008/09	2.6	3.0	2.6	3.0	1.9	2.2	2.7	1.8	2.8	2.6			25.2	32.0
Potato chips														
MEXICO														
2005/06	2.4	4.4	6.0	5.5	5.7	3.3	4.1	2.9	4.3	3.9	3.1	4.1	42.4	49.5
2006/07	4.8	4.6	3.9	4.2	4.1	4.3	3.0	2.9	3.1	1.9	1.1	1.8	36.6	39.6
2007/08	3.1	3.1	1.5	1.9	2.3	2.1	2.7	1.6	1.2	1.1	1.8	1.8	20.7	24.4
2008/09	3.2	1.4	0.9	0.9	0.6	0.6	0.8	1.2	0.6	1.0			11.2	13.1
CANADA														
2005/06	2.1	1.8	2.3	1.7	1.6	1.8	2.3	2.2	2.8	3.4	3.7	4.5	22.1	30.3
2006/07	3.2	4.0	3.8	4.2	2.8	3.6	3.2	3.5	4.0	4.1	4.5	4.1	36.4	45.1
2007/08	3.6	4.8	4.4	4.3	3.7	5.1	4.3	4.8	5.0	4.4	4.8	6.7	44.4	55.9
2008/09	6.5	4.2	4.5	4.5	5.3	3.9	3.7	5.4	5.0	5.9			48.8	61.4
JAPAN														
2005/06	1.8	2.1	1.8	1.9	2.1	3.3	3.3	3.5	3.2	2.2	1.8	3.1	25.2	30.1
2006/07	1.3	5.1	3.3	2.2	1.6	2.1	1.8	1.7	2.2	3.0	2.5	1.9	24.2	28.6
2007/08	2.5	3.4	1.6	2.6	2.6	2.5	4.4	1.9	2.4	3.3	4.3	2.5	27.1	34.0
2008/09	2.6	2.8	4.2	2.9	2.9	6.2	4.4	1.2	3.3	3.1			33.5	42.0

1/ Potato crop year is from September to August.

2/ Year to date values are based on crop year (Sept-Aug).

Source: U.S. Dept of Commerce, U.S. Census bureau and USDA, FAS, www.FAS.USDA.gov/ustrade (FATUS).